

# KOMATSU

## **PC1250-11** **PC1250SP-11**

*EU Stage V Engine*

**HYDRAULIC EXCAVATOR**



PC1250

**ENGINE POWER**

578 kW / 775 HP @ 1.800 rpm

**OPERATING WEIGHT**

Backhoe: 115.900 - 118.300 kg  
Loading shovel: 119.500 kg

**BUCKET CAPACITY**

Backhoe: 6,7 m<sup>3</sup> @ 1,8 t/m<sup>3</sup>  
Loading shovel: 6,5 m<sup>3</sup> @ 1,8 t/m<sup>3</sup>

# Walk-Around

PG1250-11



## ENGINE POWER

578 kW / 775 HP @ 1.800 rpm

## OPERATING WEIGHT

Backhoe: 115.900 - 118.300 kg  
Loading shovel: 119.500 kg

## BUCKET CAPACITY

Backhoe: 6,7 m<sup>3</sup> @ 1,8 t/m<sup>3</sup>  
Loading shovel: 6,5 m<sup>3</sup> @ 1,8 t/m<sup>3</sup>

## EXCEPTIONAL WORKABILITY AND ENVIRONMENTAL PERFORMANCE

### *Powerful and Environmentally Friendly*

- Fuel efficient high performance Komatsu SAA6D170E-7 engine
- EU Stage V engine
- Adjustable idle shutdown
- Komatsu fuel-saving technology
- 7% fuel consumption reduction

### *Maximised Efficiency*

- Increased productivity (up to 8%)
- Large digging force
- Large drawbar pull and steering force
- Two-mode boom control
- Swing priority mode

### *First-Class Comfort*

- Fully air-suspended operator station
- Low-noise design
- Widescreen monitor

### *Safety First*

- Komatsu SpaceCab™
- KomVision surround view system
- Neutral position detection system
- Hydraulically operated stairway as standard
- Emergency engine stop switches as standard

### *Quality You Can Rely On*

- Komatsu-quality components
- Extensive dealer support network

### *Komtrax Plus*

- Increased operational data and fuel savings



A maintenance program for Komatsu customers

# Powerful and Environmentally Friendly



## Higher productivity

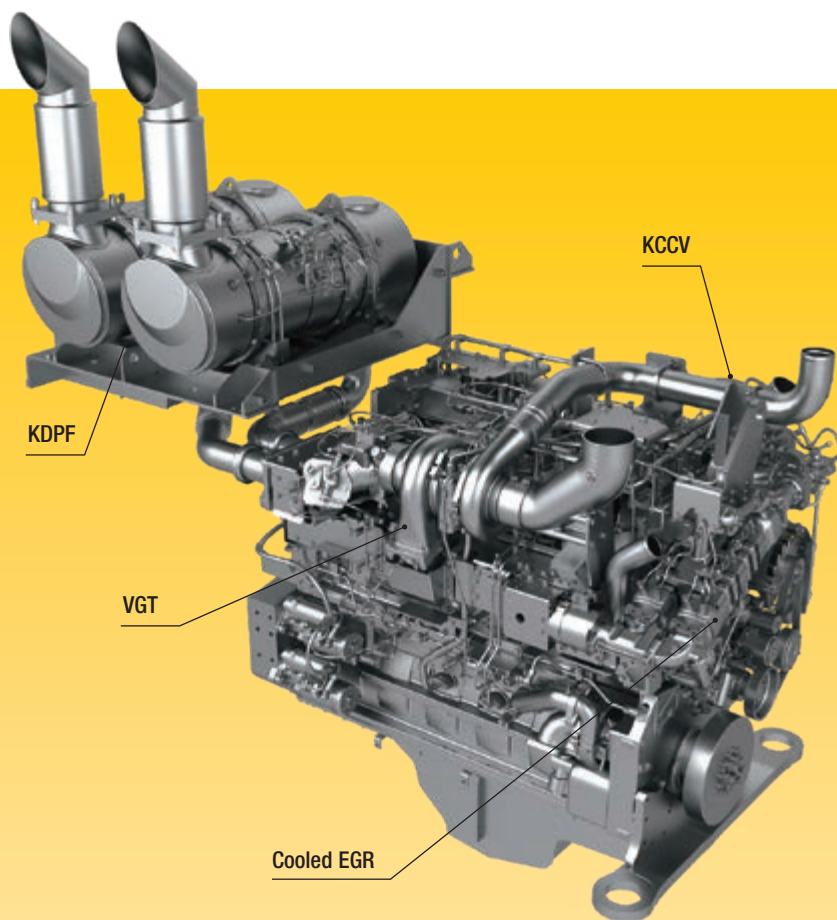
Work modes include the well-known Power and Economy modes, and the PC1250-11 also benefits from the new “Power plus” (P+) mode, which allows the operator to make full use of the increased engine power to achieve up to 8% higher production than with a PC1250-8 in P mode.

## Komatsu fuel-saving technology

Fuel consumption on the PC1250-11 is lower by up to 7%. Engine management is enhanced. The variable speed matching of the engine and hydraulic pumps guarantee efficiency and precision during single and combined movements.

## Adjustable idle shutdown

The Komatsu auto idle shutdown automatically turns off the engine after it idles for a set period of time. This feature can easily be programmed from 5 to 60 minutes, to reduce unnecessary fuel consumption and exhaust emissions, and to lower operating costs. An Eco-gauge and the Eco guidance tips on the cab monitor further encourage efficient operations.



### Komatsu EU Stage V engine

The Komatsu SAA6D170E-7 engine is productive, dependable and efficient. With low emissions, it provides a lower environmental impact and a superior performance to help reduce operating costs and lets the operator work in complete peace of mind. It features two Komatsu diesel particulate filters (KDPF), with no need for a selective catalytic reduction (SCR) system.

#### Exhaust Gas Recirculation (EGR)

Cooled EGR is a technology well-proven in current Komatsu engines. The increased capacity of the EGR cooler now ensures very low NOx emissions and a better engine performance.

#### Komatsu Closed Crankcase Ventilation (KCCV)

Crankcase emissions (blow-by gas) are passed through a CCV filter. The oil mist trapped in the filter is returned back to the crankcase while the filtered gas is returned to the air intake.

#### High-Pressure Common Rail (HPCR)

To achieve complete fuel burn and lower exhaust emissions, the heavy-duty High-Pressure Common Rail fuel injection system is computer controlled to deliver a precise quantity of pressurised fuel into the redesigned engine combustion chamber by multiple injections.

#### Variable Geometry Turbo (VGT)

The VGT provides optimal airflow to the engine combustion chamber under all speed and load conditions. Exhaust gas is cleaner, fuel economy is improved while machine power and performance are maintained.

### Electronically controlled variable speed fan

The fan speed is electronically controlled according to actual operating conditions, ensuring maximum deployment of engine power to working, while minimising noise.



Eco-gauge, Eco guidance and fuel consumption gauge



Eco guidance record



Fuel consumption history

# Maximised Efficiency

## Powerful digging force

Thanks to the high engine output and an optimised hydraulic system, the PC1250-11 delivers a powerful arm crowd force of up to 412 kN (42 tonnes) at PowerMax and a bucket digging force of up to 479 kN (48,8 tonnes) at PowerMax. [PC1250SP-11: 570 kN (58,1 tonnes)]

## Shockless boom control

The PC1250-11 features a shockless valve (double-check slow return valve) that automatically reduces the amount of vibration present when operating the boom. Operator fatigue is reduced (which can improve safety and productivity), and spillage caused by vibration is prevented.

## Swing priority mode

A twin swing motor system provides excellent swing performance, with high speed and strong braking power. The swing priority setting allows using the same smooth motion for either 180° or 90° loading operations. By altering the oil flow, the operator selects either boom or swing as the priority for increased production.

## Large drawbar pull and steering force

Because the machine has a large drawbar pull and a substantial steering force, it provides excellent mobility, even when working on an incline.

## Heavy lift mode

Gives the operator 10% more lifting force on the boom when needed for handling rock or heavy lifting applications.

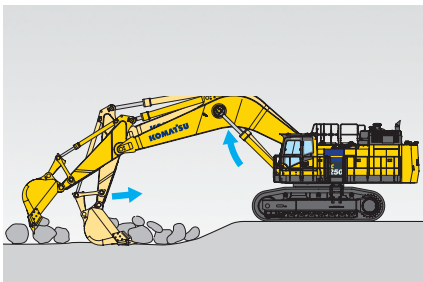


Versatility at your fingertips: select the perfect setting for each job



Full length track roller guards (optional)

## Two-mode boom control



**Smooth mode**  
Boom floats upward, reducing lifting of machine front. This facilitates gathering blasted rock and scraping down operations.



**Power mode**  
Boom pushing force is increased, providing a higher penetration force.



PC1250-11



# First-Class Comfort

## Increased comfort

In the wide Komatsu SpaceCab™, a standard air-suspended high-back seat, heated and ventilated for improved comfort and with fully adjustable armrests, is the centre of a comfortable and low-fatigue working environment. High visibility and ergonomic controls further assist to maximise the operator's productivity.

## Perfect operator convenience

In addition to the standard AM/FM radio, the PC1250-11 has Bluetooth® and an auxiliary input for connecting external devices and playing music through the cab speakers. Two 12-volt power ports are also incorporated in the cab. Proportional controls are fitted as standard for safe and precise operation of attachments.

## Low-noise design

Komatsu crawler excavators have very low external noise levels. The optimal usage of sound insulation and of sound absorbing materials helps to make noise levels inside the cab comparable to those of an executive car.



Convenient, ergonomic and precise control: joysticks (short levers are available as option)



Plenty of storage room, a hot and cool box, a magazine box and a cup holder



Armrest with simple height adjustment



# Information & Communication Technology



## Lower operating costs

Komatsu ICT contributes to the reduction of operating costs by assisting to comfortably and efficiently manage operations. It raises the level of customer satisfaction and the competitive edge of our products.

## Widescreen monitor

Conveniently customisable and with a choice of 26 EU languages, the widescreen monitor with simple switches and multifunction keys gives fingertip access to a large range of functions and operating info. The KomVision images and Eco gauge are now incorporated into the default main screen.

## An evolutionary interface

Helpful information is now easier than ever to find and understand with the upgraded monitor interface. An optimal main screen for the ongoing work can be selected simply by pressing the F3 key.

| Operation Records (1Day)              |          |
|---------------------------------------|----------|
| Working Hours (Engine On)             | 0.2 h    |
| Average Fuel Consumption              | 23.0 l/h |
| Actual Working Hours                  | 0.1 h    |
| Avg Fuel Consumption (Actual Working) | 23.0 l/h |
| Fuel Consumption                      | 7.0 l    |
| Idle Time Hours                       | 0.1 h    |

Quick view on the operation logs



With KomVision, various camera view options are available whilst maintaining constant "birdview" from above the machine



Operator identification function

# Komtrax Plus

## What

- Komtrax is Komatsu's remote equipment monitoring and management system
- Komtrax is standard equipment on all Komatsu construction products
- Komtrax continuously monitors and records machine health and operational data
- Information such as fuel consumption, utilization, and a detailed history aids in making repair or replacement decisions

## When

- Know when your machines are running or idling and make decisions that will improve your fleet utilization
- Detailed movement records ensure you know when and where your equipment is moved
- Up to date records allow you to know when maintenance was done and help you plan for future maintenance needs

## Where

- Komtrax data can be accessed virtually anywhere through your computer, the web or your smart phone
- Automatic alerts keep fleet managers up to date on the latest machine notifications

## Why

- Knowledge is power - make informed decisions to manage your fleet better
- Knowing your idle time and fuel consumption will help maximize your machine efficiency
- Take control of your equipment - any time, anywhere



## KOMTRAX Plus

### Equipment management support

Komtrax Plus enables expanded monitoring of the fleet via satellite and wireless LAN. Users can analyze "machine health" and performance from a remote location, on a near-real time basis. This includes component condition and trend data. By making this critical information readily accessible, Komtrax Plus is an effective tool in maximizing productivity and lowering operating cost.

## Safety Features

### Optimal jobsite safety

Safety features on the Komatsu PC1250-11 comply with the latest industry standards and work in synergy to minimise risks to people in and around the machine. A neutral detection system for travel and work equipment levers increase jobsite safety, along with a seat belt caution indicator and an audible travel alarm. Highly durable anti-slip plates – with additional high friction covering – maintain long term traction performance.



*The standard hydraulically operated stairway provides safer access and egress to and from the machine.*



*Three emergency engine stop switches are installed in the cab and around the machine, as standard.*



*KomVision cameras*



*Exceptional operator protection*



*Hand rails and anti-slip plates*

### KomVision

With a series of high definition networked cameras fitted on the machine, KomVision provides a crystal clear, real-time bird's eye view of the immediate surroundings on the widescreen cab monitor. The operator can quickly and easily check the machine's vicinity prior to making any movement, and focus on the work at hand even in low light conditions.

### Komatsu SpaceCab™

The wide Komatsu SpaceCab™ with user-friendly controls provides a comfortable and safe work environment. A fully adjustable air-suspended seat dampens vibrations and reduces the fatigue of long shifts. Large front and side windows give a superior visibility and higher confidence. This increases the safety for the driver as well as other people and machines on the jobsite. A laminated one piece front glass (ECE 43R) is fitted as standard, as is the Falling Object Protective System (FOPS) with openable front sun visor. A front guard is optionally available as well.

### Safe maintenance

Thermal guards around high temperature areas of the engine, protected fan belt and pulleys, a pump/engine partition that prevents hydraulic oil from spraying onto the engine, a wide catwalk and exceptionally sturdy handrails: in Komatsu tradition, the highest safety level is provided for a fast and smooth maintenance.

# Easy Maintenance



A wide, illuminated centre walkway provides easy access to many inspection and maintenance points. In addition, inspection and maintenance points are grouped to facilitate easy engine and hydraulic component checks.

## Komatsu Care

Komatsu Care is a maintenance program that comes as standard with your new Komatsu machine. It covers factory-scheduled



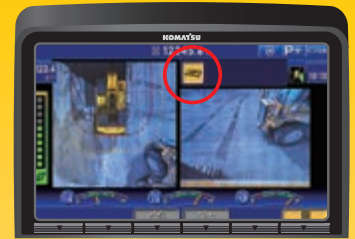
maintenance, performed with Komatsu Genuine parts by Komatsu-trained technicians. Depending on your machine's engine, it also offers extended coverage of the Komatsu Diesel Particulate Filter (KDPF) or the Komatsu Diesel Oxidation Catalyst (KDOC). Please contact your local Komatsu distributor for terms and conditions.

## Long-life oil filters

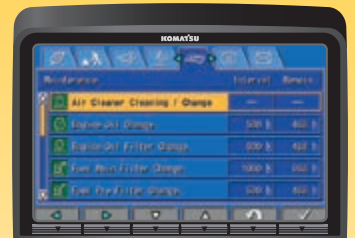
The Komatsu Genuine hydraulic oil filter uses high-performance filtering material for long replacement intervals, which significantly reduces maintenance costs.

## Easy cleaning of radiator

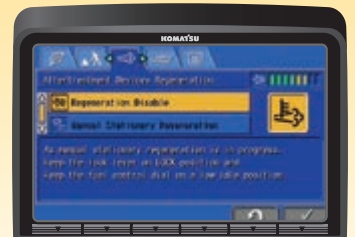
The hydraulically driven fan can be reversed to facilitate cleaning of the cooling unit. In addition, this feature contributes to reducing warm-up time in low temperatures. Hinged A/C condenser and fuel cooler provide easy access to each core.



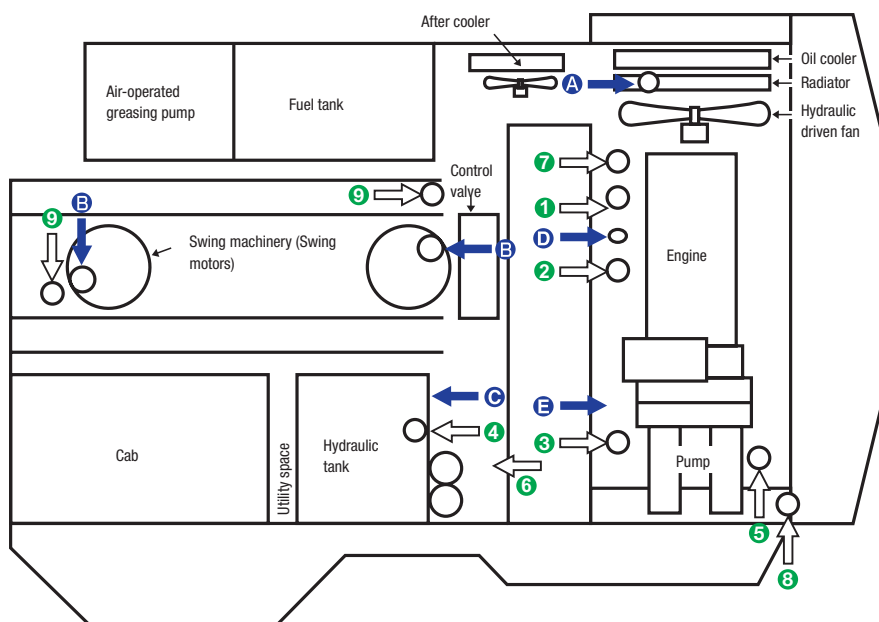
Maintenance time caution lamp



Basic maintenance screen



Aftertreatment device regeneration screen for the KDPF



- A** Coolant
- B** Swing machinery oil
- C** Hydraulic oil
- D** Engine oil
- E** PTO oil
- 1** Fuel filters
- 2** Fuel pre-filters
- 3** Engine oil filters
- 4** Hydraulic drain filter
- 5** Pilot filter
- 6** Hydraulic return filters
- 7** KCCV filter
- 8** PTO strainer
- 9** Swing motor cooling filters

## Quality You Can Rely On



### Rugged design

The undercarriage of the PC1250-11 is specifically designed to cope with the heavy forces to be found in hard quarry operations. With heavy duty double grouser track shoes and roller guard options, the moving parts of the undercarriage are strongly shielded against damage from rocks, while traction force and ground pressure may be optimized for your particular site.

### Komatsu-quality

With the latest computer techniques and a thorough test programme, Komatsu's global know-how produces equipment to meet your highest standards.

### Reliable and efficient

Productivity is the key to success – all major components of the PC1250-11 are designed and manufactured by Komatsu. All essential functions are perfectly matched for a highly reliable and productive machine.

### High strength boom and arm

Thanks to the large cross-sectional structure made with high tensile strength steel and a thick plate and partition wall, the boom and arm provide excellent durability and are highly resistant to bending and twisting. Highly durable rubbing strips on the underside of the arm protect the structure from damage. The reinforced short boom and arm specification allows to increase the bucket capacity.



*Sturdy travel motor guards and rock protectors*



*Clogging detector in hydraulic return filter prevents damage of hydraulic system*



*Komatsu bucket with Kmax teeth*

# Specifications

## ENGINE

|  |   |
|--|---|
| Model  | Komatsu SAA6D170E-7   |
| Type   | 4-cycle, water-cooled, direct injection, turbocharged, air-to-air charge air cooler, cooled EGR                           |
| Engine power   |   |
| at rated engine speed  | 1.800 rpm   |
| SAE J1995  | 578 kW / 775 HP   |
| ISO 9249 / SAE J1349* (net engine power)                     | 565 kW / 758 HP   |
| No. of cylinders   | 6   |
| Bore x stroke  | 170 x 170 mm  |
| Displacement   | 23,15 l   |
| Fan drive type   | Hydraulic   |
| Engine emissions   | EU Stage V compliant  |
| Fuel   | Diesel fuel, conforming to EN590 Class 2/Grade D. Paraffinic fuel capability (HVO, GTL, BTL), conforming to EN 15940:2016 |
| *Net horsepower at the maximum speed of radiator cooling fan | 519 kW / 696 HP   |

## HYDRAULIC SYSTEM

|   |   |
|---|---|
| Type  | Open-centre load sensing system   |
| Main pump   | 3 variable displacement piston pumps supplying boom, arm, bucket, swing and travel circuits |
| Maximum pump flow                                       |   |
| Implement and travel                                    | 2 x 494 l/min   |
| Swing   | 1 x 600 l/min   |
| Sub-pump for control circuit                            | Gear pump   |
| Hydraulic motors  |   |
| Travel  | 2 x axial piston motors with parking brake  |
| Swing   | 2 x axial piston motors with swing holding brake  |
| Relief valve settings                                   |   |
| Backhoe   | 320 kg/cm <sup>2</sup>  |
| Loading shovel  | 320 kg/cm <sup>2</sup>  |
| Travel  | 350 kg/cm <sup>2</sup>  |
| Swing   | 300 kg/cm <sup>2</sup>  |
| Pilot circuit   | 32 kg/cm <sup>2</sup>   |
| Hydraulic cylinders (no. of cylinders – bore x stroke): |   |
| Boom  | 2 – 225 mm x 2.390 mm   |
| Arm   | 1 – 250 mm x 2.435 mm   |
| Standard bucket   | 2 – 160 mm x 1.825 mm   |
| SP bucket   | 2 – 160 mm x 1.950 mm   |

## SWING SYSTEM

|                          |                      |
|--------------------------|----------------------|
| Type                     | 2 x hydraulic motors |
| Swing reduction          | Planetary gear       |
| Swing circle lubrication | Grease-bathed        |
| Swing lock               | Oil disc brake       |
| Swing speed              | 5,8 rpm              |

## DRIVES AND BRAKES

|                      |   |
|----------------------|---|
| Steering control     | 2 levers with pedals, giving full independent control of each track |
| Drive method         | Hydrostatic   |
| Travel motor         | Axial piston motor, in-shoe design                                  |
| Reduction system     | Planetary triple reduction  |
| Gradeability         | 70%   |
| Max. travel speeds   |   |
| Lo / Hi              | 2,3 / 3,3 km/h  |
| Maximum drawbar pull | 70.000 kg   |
| Service brake        | Hydraulic lock  |
| Parking brake        | Hydraulic lock  |

## UNDERCARRIAGE

|                             |   |
|-----------------------------|---|
| Construction                | H-leg frame with box section track frames |
| Track assembly              |   |
| Type                        | Fully sealed                              |
| Shoes (each side)           | 48  |
| Tension                     | Hydraulic                                 |
| Rollers                     |   |
| Track rollers (each side)   | 8   |
| Carrier rollers (each side) | 3   |

## SERVICE REFILL CAPACITIES

|                         |          |
|-------------------------|----------|
| Fuel tank               | 1360 l   |
| Radiator                | 142 l    |
| Engine oil              | 86 l     |
| Swing drive             | 2 x 20 l |
| Hydraulic tank          | 670 l    |
| Final drive (each side) | 21 l     |
| Power Take Off (PTO)    | 13,5 l   |

## OPERATING WEIGHT (APPR.)

Backhoe: PC1250-11: Operating weight, including 9.100 mm boom, 3.400 mm arm, SAE J 296 heaped 5,0 m<sup>3</sup> backhoe bucket, operator, lubricant, coolant, full fuel tank, and standard equipment.

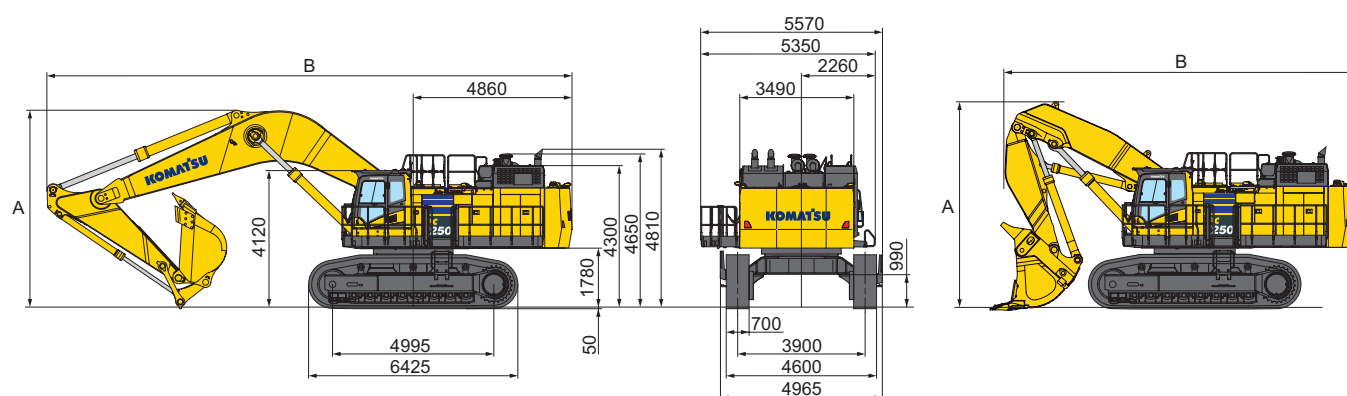
PC1250SP-11: Operating weight, including 7.800 mm boom, 3.400 mm arm, SAE J 296 heaped 6,7 m<sup>3</sup> backhoe bucket, full length roller guard, operator, lubricant, coolant, full fuel tank, and standard equipment.

Loading Shovel: Operating weight, including 5.300 mm boom, 3.800 mm arm, SAE J 296 heaped 6,5 m<sup>3</sup> bottom dump bucket, full length roller guard, operator, lubricant, coolant, full fuel tank, and standard equipment.

| Double grouser shoes | PC1250-11        |                         | PC1250SP-11      |                         |
|----------------------|------------------|-------------------------|------------------|-------------------------|
|                      | Operating weight | Ground pressure         | Operating weight | Ground pressure         |
| 700 mm               | 115.900 kg       | 1,51 kg/cm <sup>2</sup> | 118.300 kg       | 1,54 kg/cm <sup>2</sup> |
| 1.000 mm             | 118.200 kg       | 1,08 kg/cm <sup>2</sup> | –                | –                       |

# Dimensions & Performance Figures

| MACHINE DIMENSIONS | PC1250-11 |            | PC1250SP-11 | PC1250-11 Loading Shovel |
|--------------------|-----------|------------|-------------|--------------------------|
|                    |           | 9,1 m boom | 7,8 m boom  | 5,3 m boom               |
|                    | 3,4 m arm | 4,5 m arm  | 5,7 m arm   | 3,8 m arm                |
| A Overall height   | 6.040 mm  | 6.460 mm   | 6.990 mm    | 6.265 mm                 |
| B Overall length   | 16.070 mm | 16.100 mm  | 15.890 mm   | 10.990 mm                |



## MAX. BUCKET CAPACITY AND WEIGHT

### PC1250-11

|  |                             |                             |                              |
|--|-----------------------------|-----------------------------|------------------------------|
| Arm length / Max. pin load                 | 3,4 m / 15.140 kg           | 4,5 m / 13.580 kg           | 5,7 m / 9.833 kg             |
| Material weight up to 1,4 t/m <sup>3</sup> | 6,0 m <sup>3</sup> 6.740 kg | 5,5 m <sup>3</sup> 5.950 kg | 3,80 m <sup>3</sup> 4.510 kg |
| Material weight up to 1,6 t/m <sup>3</sup> | 5,6 m <sup>3</sup> 6.180 kg | 5,2 m <sup>3</sup> 5.420 kg | 3,54 m <sup>3</sup> 4.388 kg |
| Material weight up to 1,8 t/m <sup>3</sup> | 5,2 m <sup>3</sup> 5.780 kg | 4,7 m <sup>3</sup> 5.170 kg | 3,28 m <sup>3</sup> 3.933 kg |

### PC1250SP-11

|  |                              |
|--|------------------------------|
| Arm length / Max. pin load                 | 3,4 m / 18.568 kg            |
| Material weight up to 1,4 t/m <sup>3</sup> | 7,57 m <sup>3</sup> 7.970 kg |
| Material weight up to 1,6 t/m <sup>3</sup> | 7,01 m <sup>3</sup> 7.352 kg |
| Material weight up to 1,8 t/m <sup>3</sup> | 6,70 m <sup>3</sup> 6.505 kg |

### PC1250-11 Loading Shovel

|  |                               |
|--|-------------------------------|
| Arm length / Max. pin load                 | 3,8 m / 22.700 kg             |
| Material weight up to 1,4 t/m <sup>3</sup> | 8,00 m <sup>3</sup> 11.500 kg |
| Material weight up to 1,6 t/m <sup>3</sup> | 7,20 m <sup>3</sup> 10.600 kg |
| Material weight up to 1,8 t/m <sup>3</sup> | 6,50 m <sup>3</sup> 9.730 kg  |

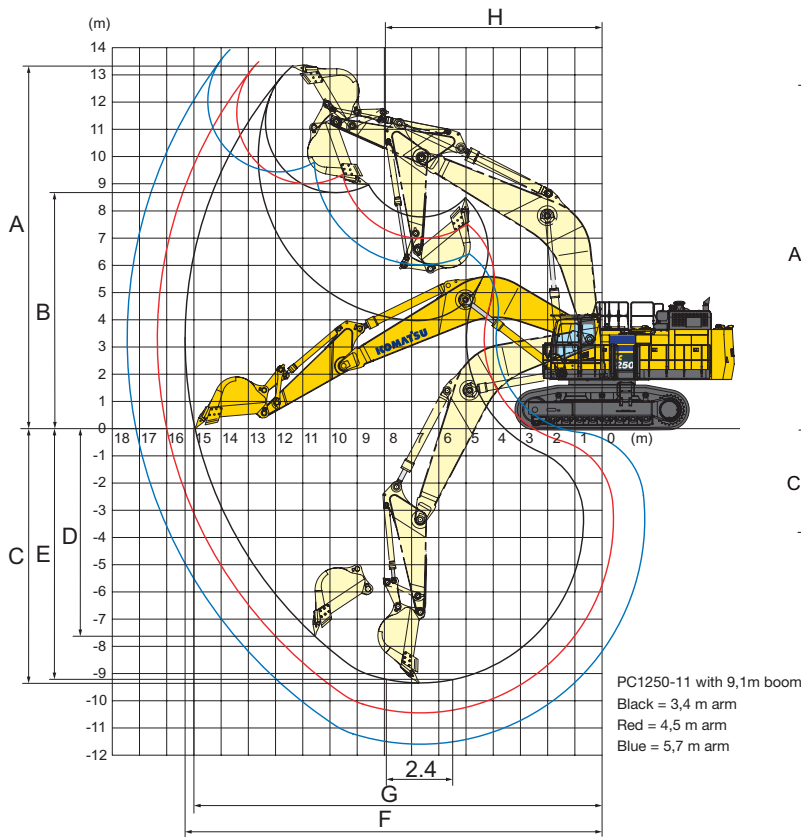
Max. capacity and weight have been calculated according to ISO 10567:2007.

Please consult with your distributor for the correct selection of buckets and attachments to suit the application.

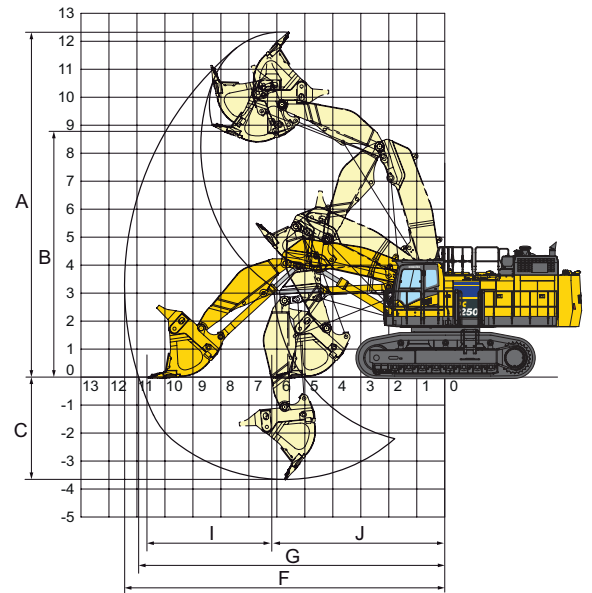
# Working Range

PC1250-11

PC1250/SP-11



PC1250-11 LOADING SHOVEL



**WORKING RANGE**

|                  |  | PC1250-11           |                     |                     | PC1250SP-11         | PC1250-11 LS         |
|------------------|--|---------------------|---------------------|---------------------|---------------------|----------------------|
|                  |  | 3,4 m arm           | 4,5 m arm           | 5,7 m arm           | 3,4 m arm           | 3,8 m arm            |
| A                | Max. digging (cutting) height          | 13.400 mm           | 13.490 mm           | 13.910 mm           | 13.000 mm           | 12.330 mm            |
| B                | Max. dumping height                    | 8.680 mm            | 9.000 mm            | 9.440 mm            | 8.450 mm            | 8.700 mm             |
| C                | Max. digging depth                     | 9.350 mm            | 10.440 mm           | 11.590 mm           | 7.900 mm            | 3.650 mm             |
| D                | Max. vertical wall digging depth       | 7.610 mm            | 8.490 mm            | 9.480 mm            | 5.025 mm            | -                    |
| E                | Max. digging depth of cut for 8' level | 9.220 mm            | 10.340 mm           | 11.500 mm           | 7.745 mm            | -                    |
| F                | Max. digging reach                     | 15.350 mm           | 16.340 mm           | 17.450 mm           | 14.070 mm           | 11.400 mm            |
| G                | Max. digging reach at ground level     | 15.000 mm           | 16.000 mm           | 17.130 mm           | 13.670 mm           | 10.900 mm            |
| H                | Min. swing radius                      | 7.965 mm            | 7.990 mm            | 8.150 mm            | 6.415 mm            | -                    |
| I                | Level crowding distance                | -                   | -                   | -                   | -                   | 4.480 mm             |
| J                | Min. crowding distance                 | -                   | -                   | -                   | -                   | 6.130 mm             |
| SAE J1179 Rating | Bucket digging force                   | 422 kN<br>43.000 kg | 422 kN<br>43.000 kg | 343 kN<br>35.000 kg | 502 kN<br>51.200 kg | -                    |
|                  | Arm crowd force                        | 392 kN<br>40.000 kg | 327 kN<br>33.300 kg | 281 kN<br>28.700 kg | 395 kN<br>40.300 kg | -                    |
| ISO 6015 Rating  | Bucket digging force                   | 479 kN<br>48.800 kg | 479 kN<br>48.800 kg | 389 kN<br>39.700 kg | 570 kN<br>58.100 kg | 579 kN<br>59.000 kgf |
|                  | Arm crowd force                        | 412 kN<br>42.000 kg | 337 kN<br>34.400 kg | 286 kN<br>29.200 kg | 412 kN<br>42.000 kg | 608 kN<br>62.000 kgf |



# Transportation Guide

## WORK EQUIPMENT WEIGHT

PC1250: 25,7 t  
 27,2 t (Heavy-duty version)  
 PC1250SP: 28,0 t

## BOOM



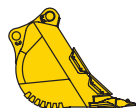
PC1250: 11,2 t / 9.475 × 2.894 × 1.474 mm  
 PC1250SP: 11,1 t / 8.170 × 3.095 × 1.474 mm  
 PC1250LS: 7,1 t / 5.650 × 2.000 × 1.500 mm

## ARM (INCL. 2 BUCKET CYLINDERS)



PC1250: 6,1 t / 4.895 × 1.626 × 890 mm  
 6,4 t / 4.895 × 1.626 × 890 mm  
 (Heavy-duty version)  
 PC1250SP: 6,6 t / 4.914 × 1.683 × 890 mm  
 PC1250LS: 5,2 t / 4.100 × 1.900 × 1.300 mm

## BUCKET



PC1250: 4,6 t / 2.700 × 2.100 × 2.050 mm  
 5,8 t / 2.580 × 2.276 × 2.250 mm  
 (Heavy-duty version)  
 PC1250SP: 6,5 t / 2.527 × 2.420 × 2.520 mm  
 PC1250LS: 10,9 t / 3.000 × 2.700 × 2.700 mm

## ARM CYLINDER



Weight: 1,5 t  
 Length: 3.950 mm  
 PC1250-11 LS:  
 Weight: 1,2 t [0,6 t × 2],  
 Length: 2.980 mm

## BOOM CYLINDER

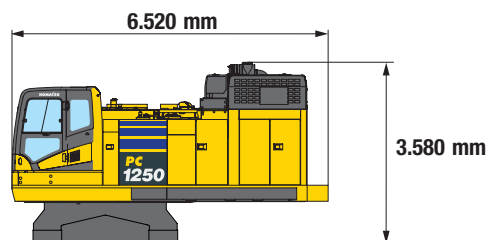


Weight: 2,3 t [1,15 t × 2]  
 Length: 3.810 mm  
 PC1250-11 LS:  
 Weight: 2,2 t [1,1 t × 2],  
 Length: 3.520 mm

## BUCKET CYLINDER

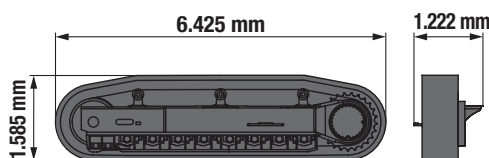
PC1250-11 LS:  
 Weight: 1,7 t [0,85 t × 2],  
 Length: 3.300 mm

## UPPER STRUCTURE



Weight: 39,9 t  
 Width: 3.495 mm

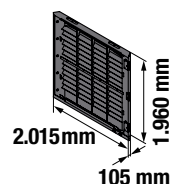
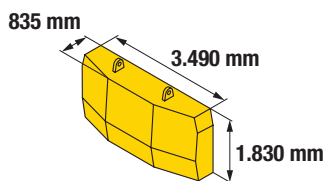
## UNDERCARRIAGE



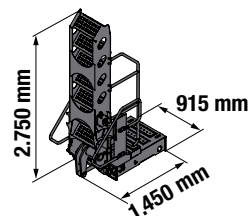
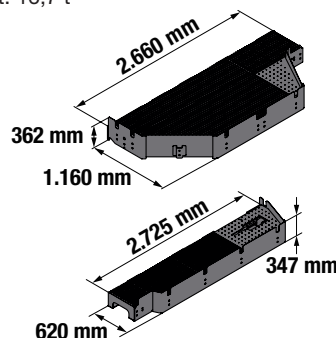
Weight:  
 31,4 t [15,7 t × 2]  
 32,2 t [16,1 t × 2] (With full length track roller guard)

## OTHERS

Weight: 17,8 t

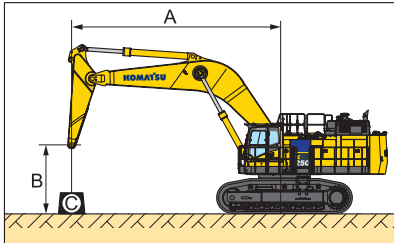


Weight: 16,7 t



Transportation volume (length x height x width)  
 Specs shown include the following equipment:  
 Backhoe: boom 9.100 mm, arm 3.400 mm, bucket 5,0 m<sup>3</sup>, shoes 700 mm double grouser  
 Loading shovel (LS): boom 5.300 mm, arm 3.800 mm, bucket 6,5 m<sup>3</sup>

# Lifting Capacity



A – Reach from swing centre

– Rating over front

Weights without bucket

B – Bucket hook height

– Rating over side

With 700 mm shoes

C – Lifting capacities

– Rating at maximum reach

## PC1250-11 / BOOM LENGTH 9,1 M / LIFTING MODE: ON

| Arm length                          | A      |    |         |         | 12,2 m  |        | 10,7 m  |         | 9,1 m   |         | 7,6 m   |         | 6,1 m   |         | 4,6 m   |         |
|-------------------------------------|--------|----|---------|---------|---------|--------|---------|---------|---------|---------|---------|---------|---------|---------|---------|---------|
|                                     | B      |    |         |         |         |        |         |         |         |         |         |         |         |         |         |         |
| <b>Heavy Lift: ON</b><br><br>3,4 m  | 9,1 m  | kg | *22.750 | 21.750  |         |        | *23.400 | *23.400 |         |         |         |         |         |         |         |         |
|                                     | 6,1 m  | kg | 21.850  | 18.000  | 22.450  | 18.550 | *25.200 | 22.850  | *28.000 | *28.000 | *32.850 | *32.850 |         |         |         |         |
|                                     | 3,0 m  | kg | 20.400  | 16.750  | 21.700  | 17.800 | 26.200  | 21.400  | 32.500  | 26.350  | *40.050 | 33.500  |         |         |         |         |
|                                     | 0,0 m  | kg | 21.000  | 17.150  | 21.150  | 17.300 | 25.250  | 20.500  | 31.100  | 25.050  | 40.350  | 32.000  |         |         |         |         |
|                                     | -3,0 m | kg | 24.500  | 19.950  |         |        | 25.300  | 20.550  | 31.000  | 24.950  | *40.300 | 32.050  | *49.000 | 44.900  | *41.250 | *41.250 |
|                                     | -6,1 m | kg | *26.000 | *26.000 |         |        |         |         |         |         | *30.200 | *30.200 | *37.300 | *37.300 |         |         |
| <b>Heavy Lift: OFF</b><br><br>3,4 m | 9,1 m  | kg | *20.750 | *20.750 |         |        | *20.900 | *20.900 |         |         |         |         |         |         |         |         |
|                                     | 6,1 m  | kg | *20.350 | 18.000  | *21.150 | 18.550 | *22.450 | *22.450 | *25.000 | *25.000 | *29.350 | *29.350 |         |         |         |         |
|                                     | 3,0 m  | kg | 20.400  | 16.750  | 21.700  | 17.800 | *24.900 | 21.400  | *28.950 | 26.350  | *35.650 | 33.500  |         |         |         |         |
|                                     | 0,0 m  | kg | 21.000  | 17.150  | 21.150  | 17.300 | 25.250  | 20.500  | *31.000 | 25.050  | *37.800 | 32.000  |         |         |         |         |
|                                     | -3,0 m | kg | *23.550 | 19.950  |         |        | *24.650 | 20.550  | *29.750 | 24.950  | *35.750 | 32.050  | *43.500 | *43.500 | *37.700 | *37.700 |
|                                     | -6,1 m | kg | *22.900 | *22.900 |         |        |         |         |         |         | *26.650 | *26.650 | *32.900 | *32.900 |         |         |

|                                     |        |    |         |         |         |         |         |         |         |         |         |         |         |         |         |         |
|-------------------------------------|--------|----|---------|---------|---------|---------|---------|---------|---------|---------|---------|---------|---------|---------|---------|---------|
| <b>Heavy Lift: ON</b><br><br>4,5 m  | 9,1 m  | kg | *15.900 | *15.900 | *18.550 | *18.550 |         |         |         |         |         |         |         |         |         |         |
|                                     | 6,1 m  | kg | *15.650 | *15.650 | *21.500 | 18.700  | *22.900 | *22.900 | *25.200 | *25.200 |         |         |         |         |         |         |
|                                     | 3,0 m  | kg | *16.400 | 14.750  | 21.600  | 17.650  | *26.100 | 21.350  | *30.200 | 26.450  | *36.900 | 33.850  |         |         |         |         |
|                                     | 0,0 m  | kg | *18.300 | 14.950  | 20.700  | 16.850  | 24.850  | 20.100  | 30.750  | 24.650  | 39.850  | 31.500  | *32.350 | *32.350 |         |         |
|                                     | -3,0 m | kg | 20.800  | 16.900  |         |         | 24.450  | 19.750  | 30.200  | 24.100  | 39.350  | 31.000  | *50.850 | 43.400  | *36.350 | *36.350 |
|                                     | -6,1 m | kg | *24.700 | 22.850  |         |         |         |         | *28.150 | 25.000  | *34.700 | 32.050  | *42.550 | *42.550 | *53.100 | *53.100 |
| <b>Heavy Lift: OFF</b><br><br>4,5 m | 9,1 m  | kg | *14.450 | *14.450 | *16.850 | *16.850 |         |         |         |         |         |         |         |         |         |         |
|                                     | 6,1 m  | kg | *14.250 | *14.250 | *19.100 | 18.700  | *20.350 | *20.350 | *22.500 | *22.500 |         |         |         |         |         |         |
|                                     | 3,0 m  | kg | *14.900 | 14.750  | *20.800 | 17.650  | *23.150 | 21.350  | *26.800 | 26.450  | *32.800 | *32.800 |         |         |         |         |
|                                     | 0,0 m  | kg | *16.650 | 14.950  | 20.700  | 16.850  | 24.850  | 20.100  | *29.750 | 24.650  | *36.500 | 31.500  | *29.550 | *29.550 |         |         |
|                                     | -3,0 m | kg | *20.400 | 16.900  |         |         | 24.450  | 19.750  | *29.850 | 24.100  | *36.150 | 31.000  | *45.050 | 43.400  | *33.150 | *33.150 |
|                                     | -6,1 m | kg | *21.750 | *21.750 |         |         |         |         | *24.800 | *24.800 | *30.650 | *30.650 | *37.550 | *37.550 | *46.850 | *46.850 |

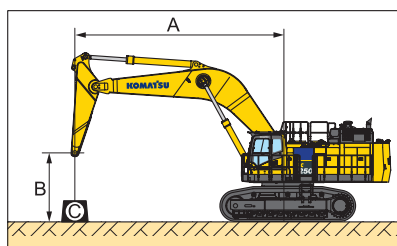
\* Load is limited by hydraulic capacity rather than tipping.

Ratings are based on SAE Standard No. 10567.

Rated loads do not exceed 87% of hydraulic lift capacity or 75% of tipping load.

Lifting capacity stated is based on lifting with bare arm. When lifting with additional equipment installed to the arm, please subtract the weight of all additional equipment from the values stated.

PG1250-11



A – Reach from swing centre

– Rating over front

Weights without bucket

B – Bucket hook height

– Rating over side

With 700 mm shoes

C – Lifting capacities

– Rating at maximum reach

## PC1250-11 / BOOM LENGTH 9,1 M / LIFTING MODE: ON

| Arm length              | A       |         |         | 13,7    |        | 12,2    |         | 10,7    |         | 9,1     |         | 7,6     |         | 6,1     |         |
|-------------------------|---------|---------|---------|---------|--------|---------|---------|---------|---------|---------|---------|---------|---------|---------|---------|
|                         | B       |         |         |         |        |         |         |         |         |         |         |         |         |         |         |
| <b>Lifting mode: ON</b> | 9,1 kg  | *11.750 | *11.750 |         |        |         |         |         |         |         |         |         |         |         |         |
|                         | 6,1 kg  | *11.600 | *11.600 | *18.450 | 15.650 | *19.450 | 19.050  |         |         |         |         |         |         |         |         |
|                         | 3,0 kg  | *12.050 | *12.050 | 18.150  | 14.850 | 21.700  | 17.800  | *24.200 | 21.600  | *27.750 | 26.950  | *33.550 | *33.550 |         |         |
|                         | 0,0 kg  | *13.250 | 13.150  | 17.450  | 14.150 | 20.600  | 16.700  | 24.800  | 20.000  | 30.750  | 24.650  | *39.350 | 31.550  | *35.350 | *35.350 |
|                         | -3,0 kg | *15.700 | 14.450  |         |        | 20.050  | 16.200  | 24.000  | 19.250  | 29.700  | 23.650  | 38.750  | 30.400  | *50.200 | 42.450  |
|                         | -6,1 kg | *21.500 | 18.300  |         |        |         |         | 24.400  | 19.650  | 30.000  | 23.950  | *37.400 | 30.850  | *46.400 | 43.350  |
| <b>Heavy Lift: OFF</b>  | 9,1 kg  | *10.650 | *10.650 |         |        |         |         |         |         |         |         |         |         |         |         |
|                         | 6,1 kg  | *10.500 | *10.500 | *16.650 | 15.650 | *17.250 | *17.250 |         |         |         |         |         |         |         |         |
|                         | 3,0 kg  | *10.900 | *10.900 | *17.900 | 14.850 | *19.300 | 17.800  | *21.400 | *21.400 | *24.600 | *24.600 | *29.750 | *29.750 |         |         |
|                         | 0,0 kg  | *12.000 | *12.000 | 17.450  | 14.150 | 20.600  | 16.700  | *24.050 | 20.000  | *28.300 | 24.650  | *34.850 | 31.550  | *32.250 | *32.250 |
|                         | -3,0 kg | *14.250 | *14.250 |         |        | 20.050  | 16.200  | 24.000  | 19.250  | *29.600 | 23.650  | *36.100 | 30.400  | *45.800 | 42.450  |
|                         | -6,1 kg | *19.500 | 18.300  |         |        |         |         | *22.350 | 19.650  | *27.150 | 23.950  | *33.000 | 30.850  | *40.950 | *40.950 |

## PC1250SP-11 / BOOM LENGTH 7,8 M / LIFTING MODE: ON

| Arm length              | A       |         |         | 12,2 |  | 10,7    |        | 9,1     |         | 7,6     |         | 6,1     |         | 4,6     |         |
|-------------------------|---------|---------|---------|------|--|---------|--------|---------|---------|---------|---------|---------|---------|---------|---------|
|                         | B       |         |         |      |  |         |        |         |         |         |         |         |         |         |         |
| <b>Lifting mode: ON</b> | 9,1 kg  | *21.000 | *21.000 |      |  |         |        | *28.700 | *28.700 |         |         |         |         |         |         |
|                         | 6,1 kg  | *20.100 | *20.100 |      |  | 27.800  | 22.950 | *30.800 | 29.250  | *34.900 | *34.900 | *42.200 | *42.200 |         |         |
|                         | 3,0 kg  | *21.050 | 19.800  |      |  | 26.750  | 21.950 | 33.550  | 27.350  | *41.500 | 35.300  |         |         |         |         |
|                         | 0,0 kg  | *24.250 | 20.600  |      |  | 26.050  | 21.250 | 32.200  | 26.050  | 41.950  | 33.450  | *55.350 | 46.300  |         |         |
|                         | -3,0 kg | *28.450 | 25.300  |      |  |         |        | *30.450 | 26.250  | *38.700 | 33.450  | *47.850 | 46.650  | *59.200 | *59.200 |
|                         | -6,1 kg |         |         |      |  |         |        |         |         |         |         |         |         |         |         |
| <b>Heavy Lift: OFF</b>  | 9,1 kg  | *19.100 | *19.100 |      |  |         |        | *25.800 | *25.800 |         |         |         |         |         |         |
|                         | 6,1 kg  | *18.300 | *18.300 |      |  | *25.450 | 22.950 | *27.600 | *27.600 | *31.350 | *31.350 | *37.950 | *37.950 |         |         |
|                         | 3,0 kg  | *19.150 | *19.150 |      |  | 26.750  | 21.950 | *30.850 | 27.350  | *37.100 | 35.300  |         |         |         |         |
|                         | 0,0 kg  | *22.050 | 20.600  |      |  | 26.050  | 21.250 | *32.050 | 26.050  | *39.000 | 33.450  | *49.350 | 46.300  |         |         |
|                         | -3,0 kg | *25.250 | *25.250 |      |  |         |        | *27.050 | 26.250  | *34.400 | 33.450  | *42.550 | *42.550 | *52.550 | *52.550 |
|                         | -6,1 kg |         |         |      |  |         |        |         |         |         |         |         |         |         |         |

\* Load is limited by hydraulic capacity rather than tipping.

Ratings are based on SAE Standard No. 10567.

Rated loads do not exceed 87% of hydraulic lift capacity or 75% of tipping load.

Lifting capacity stated is based on lifting with bare arm. When lifting with additional equipment installed to the arm, please subtract the weight of all additional equipment from the values stated.

# Standard and Optional Equipment

## ENGINE

|   |   |
|---|---|
| Komatsu SAA6D170E-7 turbocharged common rail direct injection diesel engine | ● |
| EU Stage V compliant  | ● |
| Automatic engine warm-up system   | ● |
| Auto-deceleration function  | ● |
| Adjustable idle shutdown  | ● |
| Dry type air cleaner, double element  | ● |
| Fuel pre-filter with water separator  | ● |
| Variable speed cooling fan, hydraulic drive, reversible                     | ● |
| Battery disconnect switch   | ● |
| Circuit breaker   | ● |
| Alternator 24 V / 90 A  | ● |
| Starter motor 2 × 24 V / 11 kW  | ● |
| Batteries 2 × 12 V / 220 Ah   | ● |

## HYDRAULIC SYSTEM

|   |   |
|---|---|
| 2 speed travel system with auto shift   | ● |
| 3 working modes (Power plus, Power, Economy)  | ● |
| Automatic swing holding brake   | ● |
| Fully hydraulic, with Open-Center Load-Sensing and engine speed sensing (Pump and engine mutual control system) | ● |
| Heavy lift mode   | ● |
| In-line high pressure filters   | ● |
| Pressure Proportional Control (PPC) hydraulic control system  | ● |
| Shockless control system for boom   | ● |
| Two-mode setting for boom   | ● |

## WORK EQUIPMENT

|                              |   |
|------------------------------|---|
| Arms (Backhoe):              |   |
| 3.400 mm HD arm assembly     | ○ |
| 3.400 mm SP arm assembly     | ○ |
| 4.500 mm HD arm assembly     | ○ |
| 5.700 mm arm assembly        | ○ |
| Booms (Backhoe):             |   |
| 7.800 mm SP boom assembly    | ○ |
| 9.100 mm boom assembly       | ○ |
| Loading shovel assembly      |   |
| 5.300 mm boom & 3.800 mm arm | ○ |

## CABIN

|  |   |
|--|---|
| Cab with fixed type front window                   | ● |
| Heated and ventilated high-back air-suspended seat | ● |
| 12 Volt power supply                               | ● |
| Automatic climate control system, with defroster   | ● |
| AM/FM radio with Bluetooth®                        | ● |
| Auxiliary input (3,5 mm jack)                      | ● |
| Secondary engine shut down switch                  | ● |
| KomVision surround view system                     | ● |
| Large high resolution LCD color monitor            | ● |
| Lock lever   | ● |
| Mirrors (RH,LH)                                    | ● |
| Washable cab floor mat                             | ● |
| Seat belt, 78 mm                                   | ● |
| Bolt-on top guard, OPG Level 2 (ISO 10262)         | ● |
| Full front guard                                   | ○ |

## UNDERCARRIAGE

|                                       |   |
|---------------------------------------|---|
| Carrier rollers, 3 (Each side)        | ● |
| Hydraulic track adjusters (Each side) | ● |
| Track rollers, 8 (Each side)          | ● |
| Track shoes, 700 mm double grouser    | ● |
| Track frame undercovers (Centre)      | ● |
| Track guiding guards (Each side)      | ● |
| Travel motor guards                   | ● |
| Rock protectors                       | ● |
| Track roller guard (Full length)      | ○ |
| Shoes: 1.000 mm double grouser        | ○ |

## FULL LED LIGHTING SYSTEM

|   |   |
|---|---|
| Working lights: 2 boom, 2 cab roof, 1 right front | ● |
| Walkthrough light                                 | ● |
| Step light with timer                             | ● |
| Rear working light                                | ● |
| Flashing light connected with horn                | ● |

## OTHER EQUIPMENT

|   |   |
|---|---|
| Counterweight, 16.700 kg  | ● |
| Electric priming pump for fuel                                      | ● |
| Equipment Management Monitoring System                              | ● |
| General tool kit  | ● |
| Grease gun, electric pump   | ● |
| Hand rails & guard rails  | ● |
| Horn, air   | ● |
| Komtrax Plus  | ● |
| One-touch engine oil drainage                                       | ● |
| Preventive Maintenance (PM) tune-up service connector               | ● |
| Rear reflectors   | ● |
| Seat belt indicator   | ● |
| Anti-slip plates  | ● |
| Travel alarm  | ● |
| Vandalism protection locks  | ● |
| Wide catwalk  | ● |
| Radiator and oil cooler dustproof net                               | ● |
| Emergency engine stop switch: 1 inside cab, 1 LH catwalk, 1 RH deck | ● |
| Hydraulically operated stairway                                     | ● |
| Engine coolant heater   | ○ |
| Engine oil pan heater   | ○ |
| Fuel quick charge system  | ○ |

Further equipment on request

- standard equipment
- optional equipment

Your Komatsu partner:

# KOMATSU

**Komatsu Europe  
International N.V.**

Mechelsesteenweg 586  
B-1800 VILVOORDE (BELGIUM)  
Tel. +32-2-255 24 11  
Fax +32-2-252 19 81  
[www.komatsu.eu](http://www.komatsu.eu)

EENSS20363 03/2022

**KOMATSU** is a trademark of Komatsu Ltd. Japan.