

# KOMATSU

## PC210-11 PC210LC-11 PC210NLC-11



Hydraulic excavator

**Engine power**

123 kW / 165 HP @ 2000 rpm

**Operating weight**

PC210-11: 22120 - 23460 kg

PC210LC-11: 22450 - 24110 kg

PC210NLC-11: 22400 - 23830 kg

**Bucket capacity**

max. 1.69 m<sup>3</sup>

## PC210-11



Engine power  
**123 kW / 165 HP @ 2000 rpm**

Operating weight  
**PC210-11: 22120 - 23460 kg**  
**PC210LC-11: 22450 - 24110 kg**  
**PC210NLC-11: 22400 - 23830 kg**

Bucket capacity  
**max. 1.69 m<sup>3</sup>**

# Exceptional workability and environmental performance

## Powerful and environmentally friendly

- EU Stage V engine
- Adjustable idle shutdown
- Komatsu fuel-saving technology

## First-class comfort

- Fully air-suspended operator station
- Low-noise design
- Widescreen monitor

## Maximised efficiency

- Increased productivity
- Built-in versatility and superior productivity
- Enhanced engine management
- Improved hydraulic efficiency
- Komatsu Integrated Attachment Control (KIAC)

## Safety first

- Komatsu SpaceCab™
- KomVision surround view system
- Neutral position detection system

## Quality you can rely on

- Komatsu-quality components
- Extensive dealer support network

## Komtrax

- Komatsu Wireless Monitoring System
- 4G mobile communications
- Integrated communication antenna
- Increased operational data and reports



A maintenance program  
for Komatsu customers



### **Higher productivity**

The PC210-11 is quick and precise. It features a powerful Komatsu EU Stage V engine, Komatsu's Closed Center Load Sensing (CLSS) hydraulic system and first-class Komatsu comfort to provide a fast response and unrivalled productivity for its class.

### **Komatsu fuel-saving technology**

Fuel consumption on the PC210-11 is lower by up to 6%. Engine management is enhanced. The variable speed matching of the engine and hydraulic pump and a viscous fan clutch guarantee efficiency and precision during single and combined movements.

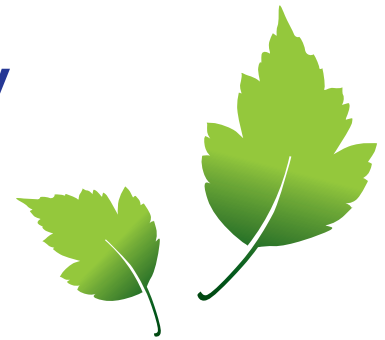
### **Adjustable idle shutdown**

The Komatsu auto idle shutdown automatically turns off the engine after it idles for a set period of time. This feature can easily be programmed from 5 to 60 minutes, to reduce unnecessary fuel consumption and exhaust emissions, and to lower operating costs. An Eco-gauge and the Eco guidance tips on the cab monitor further encourage efficient operations.

## Powerful and environmentally friendly

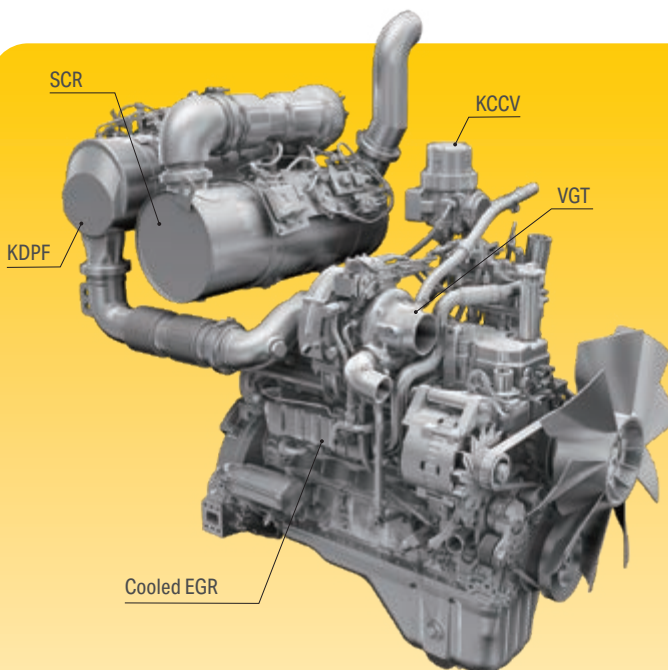
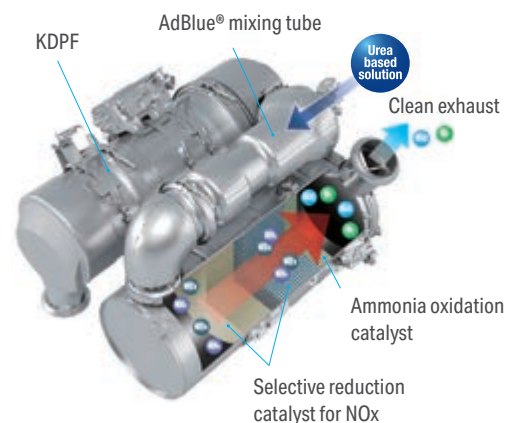
### Komatsu EU Stage V

The Komatsu EU Stage V engine is productive, dependable and efficient. With ultra-low emissions, it provides a lower environmental impact and a superior performance to help reduce operating costs and lets the operator work in complete peace of mind.



### Heavy-duty aftertreatment

The aftertreatment system combines a Komatsu Diesel Particulate Filter (KDPF) and Selective Catalytic Reduction (SCR). The SCR injects the correct amount of AdBlue® into the system at the proper rate to break down NOx into water (H<sub>2</sub>O) and non-toxic nitrogen gas (N<sub>2</sub>). NOx emissions are reduced by 80% vs. EU Stage IIIB engines.



#### High-Pressure Common Rail (HPCR)

To achieve complete fuel burn and lower exhaust emissions, the heavy-duty High-Pressure Common Rail fuel injection system is computer controlled to deliver a precise quantity of pressurised fuel into the redesigned engine combustion chamber by multiple injections.

#### Exhaust Gas Recirculation (EGR)

Cooled EGR is a technology well-proven in current Komatsu engines. The increased capacity of the EGR cooler now ensures very low NOx emissions and a better engine performance.

#### Komatsu Closed Crankcase Ventilation (KCCV)

Crankcase emissions (blow-by gas) are passed through a CCV filter. The oil mist trapped in the filter is returned back to the crankcase while the filtered gas is returned to the air intake.

#### Variable Geometry Turbo (VGT)

The VGT provides optimal airflow to the engine combustion chamber under all speed and load conditions. Exhaust gas is cleaner, fuel economy is improved while machine power and performance are maintained.

# PC210-11

## A wide choice of options

Two optional attachment lines are available and 15 attachment memory settings are simply customised. Combined with a standard-fit hydraulic quick coupler power circuit, it's easier than ever to switch working styles. With a choice of arms and undercarriages, you can configure the PC210-11 to match specific demands for transport, working envelope or duty.

## 6 working modes

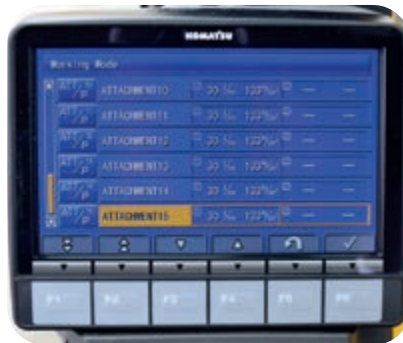
The PC210-11 delivers the power required with the lowest fuel usage. 6 working modes are available: Power, Lifting/Fine Operation, Breaker, Economy, Attachment Power and Attachment Economy. The operator can ideally balance the Economy mode between power and economy to match the work at hand. The oil flow delivered to hydraulic attachments is also adjustable directly on the class-leading widescreen monitor panel.



Two-piece boom



Two optional hydraulic lines to mount a variety of attachments



Komatsu Integrated Attachment Control (KIAC) for up to 15 tool presets for oil flow and pressure



Versatility at your fingertips: select the perfect setting for each job



## Maximised efficiency

### Built-in versatility

Powerful and precise, the Komatsu PC210-11 is equipped to efficiently carry out any task your business requires. On all jobsites, big or small, for digging, trenching, landscaping or site preparation, the Komatsu hydraulic system always provides maximum productivity and control.



## First-class comfort

### Enhanced work environment

Designed to prioritise both productivity and operator well-being, the Komatsu crawler excavator cab features thoughtful ergonomics with high-visibility handrails, and improved interior LED lighting. Stepping inside reveals a sleek, dark colour scheme complemented by an effortlessly cleanable floor mat. Upgraded UV-protective tint on the cab rear window minimises sun exposure and helps maintain a cool working environment.

### Future-proof customisable workspace

The operator cab offers extensive customisation possibilities. A multi-functional utility bar allows for adding personal accessories such as additional monitors or tablets, while dual USB ports (USB-A & USB-C) enable mobile device charging.



Convenient and secure entry to the spacious, well-insulated, low-noise cab



Multi-functional utility bar (items shown are for illustrative purposes only)



Optional premium seat with top quality cushioning, auto weight adjustment, lumbar support, climate control system, available with optional multi-position armrests and ergonomic control levers





## Safety first

### Optimal jobsite safety

Safety features on the Komatsu PC210-11 comply with the latest industry standards and work in synergy to minimise risks to people in and around the machine. A neutral detection system for travel and work equipment levers increase jobsite safety, along with a seat belt caution indicator and an audible travel alarm. Highly durable anti-slip plates – with additional high friction covering – maintain long term traction performance.



### Safe maintenance

Thermal guards around high temperature areas of the engine, protected fan belt and pulleys, a pump/engine partition that prevents hydraulic oil from spraying onto the engine, a wide catwalk and exceptionally sturdy handrails: in Komatsu tradition, the highest safety level is provided for a fast and smooth maintenance.



### Komatsu SpaceCab™

The ROPS cab has a tubular steel frame and provides high shock absorbercy, impact resistance and durability. The seat belt is well designed to keep the operator in the safety zone of the cab in the event of a rollover. Optionally the cab can be fitted with a Falling Object Protective System (FOPS) with openable front guard.



### KomVision

KomVision machine visibility gives the operator a constant clear view of the safety zone around the machine. This allows the operator to focus on the work at hand even in low light conditions.



**An evolutionary interface**

Helpful information is now easier than ever to find and understand with the upgraded monitor interface. An optimal main screen for the ongoing work can be selected simply by pressing the F3 key.

**Lower operating costs**

Komatsu ICT contributes to the reduction of operating costs by assisting to comfortably and efficiently manage operations. It raises the level of customer satisfaction and the competitive edge of our products.

**Widescreen monitor**

Conveniently customisable and with a choice of 26 languages, the widescreen monitor with simple switches and multifunction keys gives fingertip access to a large range of functions and operating info. The rear camera view and an AdBlue® level gauge are now incorporated into the default main screen.



Quick view on the operation logs



With KomVision, various camera view options are available whilst maintaining constant "birdview" from above the machine



Operator identification function

## Information & communication technology



### Knowledge

You get quick answers to basic and critical questions about your machines – what they're doing, when they did it, where they're located, how they can be used more efficiently and when they need to be serviced. Performance data is relayed by wireless communication technology (satellite, GPRS or 4G depending on model) from the machine to a computer and to the local Komatsu distributor – who's readily available for expert analysis and feedback.

### Convenience

Komtrax enables convenient fleet management on the web, wherever you are. Data is analysed and packaged specifically for effortless and intuitive viewing in maps, lists, graphs and charts. You can foresee eventual maintenance issues and required spare parts, and troubleshoot a problem before Komatsu technicians arrive on site.



### The way to higher productivity

Komtrax uses the latest wireless monitoring technology. Compatible on PC, smartphone or tablet, it delivers insightful and cost saving information about your fleet and equipment, and offers a wealth of information to facilitate peak machine performance. By creating a tightly integrated web of support it allows proactive and preventive maintenance and helps to efficiently run a business.

### Power

The detailed information that Komtrax puts at your fingertips 24 hours a day, 7 days a week gives the power to make better daily and long-term strategic decisions – at no extra cost. Problems can be anticipated, maintenance schedules customised, downtime minimised and machines kept where they belong: working on the jobsite.



## Easy maintenance



### Central service points

Komatsu designed the PC210-11 with centralised and conveniently located service points to make necessary inspections and maintenance quick and easy.

### Komatsu Care

Komatsu Care is a maintenance program that comes as standard with your new Komatsu machine. It covers factory-scheduled maintenance, performed with Komatsu Genuine parts by Komatsu-trained technicians. Depending on your machine's engine, it also offers extended coverage of the Komatsu Diesel Particulate Filter (KDPF) and of the Selective Catalytic Reduction (SCR). Please contact your local Komatsu distributor for terms and conditions.

### Long-life oil filters

The Komatsu Genuine hydraulic oil filter uses high-performance filtering material for long replacement intervals, which significantly reduces maintenance costs.

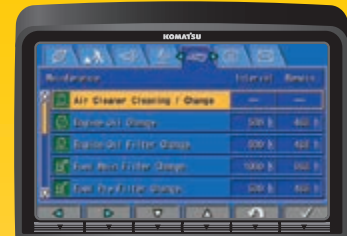


### AdBlue® tank

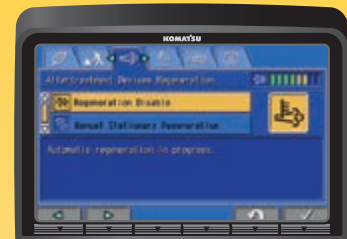
For simple access, the AdBlue® tank is installed on the front stairway.

### Flexible warranty

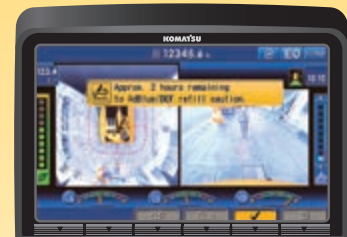
When you purchase Komatsu equipment, you gain access to a broad range of programmes and services that have been designed to help you get the most from your investment. For example, Komatsu's Flexible Warranty Programme provides a range of extended warranty options on the machine and its components. These can be chosen to meet your individual needs and activities. This programme is designed to help reduce total operating costs.



Basic maintenance screen



Aftertreatment device regeneration screen for the KDPF



AdBlue® level and refill guidance



## Quality you can rely on

### Komatsu-quality

With the latest computer techniques and a thorough test programme, Komatsu produces equipment to meet your highest standards. All major components of the PC210-11 are designed and directly manufactured by Komatsu, and essential machine functions are perfectly matched for a highly reliable and productive excavator.

### Rugged design

Maximum toughness and durability are the cornerstones of Komatsu's philosophy – along with safety and top class customer service. Single piece plates and castings are used in key areas of the machine's structure for good load distribution. Highly durable rubbing strips on the underside of the arm protect the structure against impact damage.

### Extensive support network

The extensive Komatsu distribution and dealer network is standing by to help keep your fleet in optimum condition. Customised servicing packages are available, with express availability of spare parts, to make sure that your Komatsu equipment continues to perform at its peak.



Durable and reliable undercarriage design for maximum protection



Cast boom foot and single piece boom plates

# Specifications

## Engine

Model	Komatsu SAA6D107E-3
Type	Common rail direct injection, water-cooled, emissionised, turbocharged, after-cooled diesel
Engine power	
at rated engine speed	2000 rpm
ISO 14396	123 kW / 165 HP
ISO 9249 (net engine power)	123 kW / 165 HP
No. of cylinders	6
Bore × stroke	107 × 124 mm
Displacement	6.69 l
Air filter type	Double element type with monitor panel dust indicator and auto dust evacuator
Cooling	Suction type cooling fan with radiator fly screen
Fuel	Diesel fuel, conforming to EN590 Class 2/Grade D. Paraffinic fuel capability (HVO, GTL, BTL), conforming to EN 15940:2016

## Hydraulic system

Type	HydrauMind. Closed-centre system with load sensing and pressure compensation valves
Additional circuits	2 additional circuits with proportional control can be installed
Main pump	2 variable displacement piston pumps supplying boom, arm, bucket, swing and travel circuits
Maximum pump flow	475 l/min
Relief valve settings	
Implement	380 kg/cm <sup>2</sup>
Travel	380 kg/cm <sup>2</sup>
Swing	295 kg/cm <sup>2</sup>
Pilot circuit	33 kg/cm <sup>2</sup>

## Service refill capacities

Fuel tank	400 l (PC210NLC: 325 l)
Radiator	30.7 l
Engine oil	23.1 l
Swing drive	6.5 l
Hydraulic tank	132 l
Final drive (each side)	5.0 l
AdBlue® tank	23.1 l (PC210NLC: 18.8 l)

## Swing system

Type	Axial piston motor driving through planetary double reduction gearbox
Swing lock	Electrically actuated wet multidisc brake integrated into swing motor
Swing speed	0 - 12.4 rpm
Swing torque	65 kNm

## Drives and brakes

Steering control	2 levers with pedals giving full independent control of each track
Drive method	Hydrostatic
Travel operation	Automatic 3-speed selection
Gradeability	70%, 35°
Max. travel speeds	
Lo / Mi / Hi	3.0 / 4.1 / 5.5 km/h
Maximum drawbar pull	20600 kg
Brake system	Hydraulically operated discs in each travel motor

## Undercarriage

Construction	X-frame centre section with box section track frames
Track assembly	
Type	Fully sealed
Shoes (each side)	45 (PC210), 49 (PC210LC/NLC)
Tension	Combined spring and hydraulic unit
Rollers	
Track rollers (each side)	7 (PC210), 9 (PC210LC/NLC)
Carrier rollers (each side)	2

## Environment

Engine emissions	Fully complies with EU Stage V exhaust emission regulations
Noise levels	
LwA external	100 dB(A) (2000/14/EC Stage II)
LpA operator ear	67 dB(A) (ISO 6396 dynamic test)
Vibration levels (EN 12096:1997)	
Hand/arm	≤ 2.5 m/s <sup>2</sup> (uncertainty K = 0.49 m/s <sup>2</sup> )
Body	≤ 0.5 m/s <sup>2</sup> (uncertainty K = 0.24 m/s <sup>2</sup> )
Contains fluorinated greenhouse gas HFC-134a (GWP 1430). Quantity of gas 0.9 kg, CO <sub>2</sub> equivalent 1.29 t	

**Operating weight (appr.) – Mono boom**

Triple grouser shoes	PC210-11		PC210LC-11		PC210NLC-11	
	Operating weight	Ground pressure	Operating weight	Ground pressure	Operating weight	Ground pressure
500 mm	-	-	-	-	22400 kg	0.57 kg/cm <sup>2</sup>
600 mm	22120 kg	0.51 kg/cm <sup>2</sup>	22450 kg	0.48 kg/cm <sup>2</sup>	22760 kg	0.48 kg/cm <sup>2</sup>
700 mm	22370 kg	0.45 kg/cm <sup>2</sup>	22720 kg	0.41 kg/cm <sup>2</sup>	23030 kg	0.42 kg/cm <sup>2</sup>
800 mm	22660 kg	0.40 kg/cm <sup>2</sup>	23040 kg	0.37 kg/cm <sup>2</sup>	-	-
900 mm	-	-	23310 kg	0.33 kg/cm <sup>2</sup>	-	-

Operating weight, including specified work equipment, 2.9 m arm, 650 kg bucket, operator, lubricant, coolant, full fuel tank and the standard equipment.

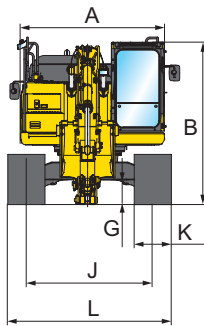
**Operating weight (appr.) – Two-piece boom**

Triple grouser shoes	PC210-11		PC210LC-11		PC210NLC-11	
	Operating weight	Ground pressure	Operating weight	Ground pressure	Operating weight	Ground pressure
500 mm	-	-	-	-	23200 kg	0.59 kg/cm <sup>2</sup>
600 mm	22920 kg	0.53 kg/cm <sup>2</sup>	23250 kg	0.49 kg/cm <sup>2</sup>	23560 kg	0.50 kg/cm <sup>2</sup>
700 mm	23170 kg	0.46 kg/cm <sup>2</sup>	23520 kg	0.42 kg/cm <sup>2</sup>	23830 kg	0.43 kg/cm <sup>2</sup>
800 mm	23460 kg	0.41 kg/cm <sup>2</sup>	23840 kg	0.38 kg/cm <sup>2</sup>	-	-
900 mm	-	-	24110 kg	0.34 kg/cm <sup>2</sup>	-	-

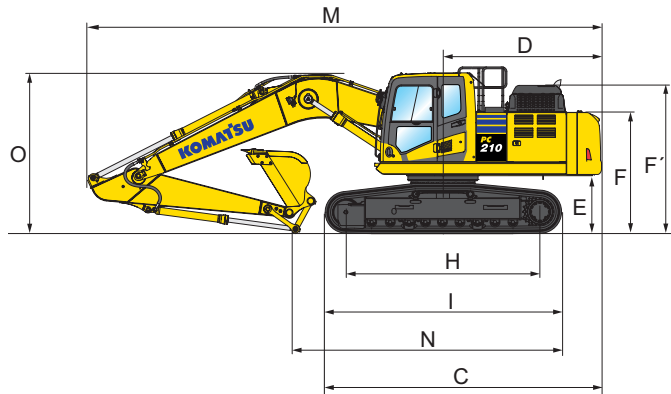
Operating weight, including specified work equipment, 2.9 m arm, 650 kg bucket, operator, lubricant, coolant, full fuel tank and the standard equipment.

## Dimensions and performance figures

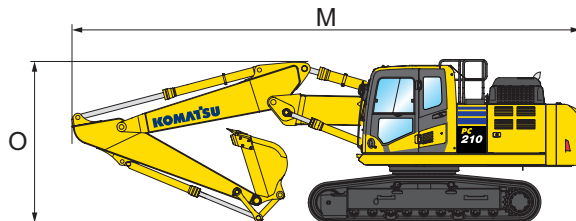
Machine dimensions	PC210-11	PC210LC-11	PC210NLC-11
A Overall width of upper structure	2705 mm	2705 mm	2540 mm
B Overall height of cab	3045 mm	3045 mm	3065 mm
C Overall length of basic machine	5025 mm	5215 mm	5085 mm
D Tail length	2990 mm	2990 mm	2860 mm
Tail swing radius	3020 mm	3020 mm	2880 mm
E Clearance under counterweight	1085 mm	1085 mm	1105 mm
F Machine tail height	2250 mm	2250 mm	2270 mm
F' Machine tail height (top of engine cover)	2765 mm	2765 mm	2785 mm
G Ground clearance	440 mm	440 mm	440 mm
H Tumbler centre distance	3275 mm	3655 mm	3655 mm
I Track length	4070 mm	4450 mm	4450 mm
J Track gauge	2200 mm	2380 mm	2040 mm
K Track shoe width	600, 700, 800 mm	600, 700, 800, 900 mm	500, 600, 700 mm
L Overall track width with 500 mm shoes	-	-	2540 mm
Overall track width with 600 mm shoes	2800 mm	2980 mm	2640 mm
Overall track width with 700 mm shoes	2900 mm	3080 mm	2740 mm
Overall track width with 800 mm shoes	3000 mm	3180 mm	-
Overall track width with 900 mm shoes	-	3280 mm	-



Mono boom



Two-piece boom



Transport dimensions	Mono boom		Two-piece boom	
Arm length	2.4 m	2.9 m	2.4 m	2.9 m
M Transport length PC210/LC	9775 mm	9705 mm	9570 mm	9715 mm
Transport length PC210NLC	9645 mm	9705 mm	9510 mm	9615 mm
N Length on ground (transport) PC210	5695 mm	4810 mm	5970 mm	5185 mm
Length on ground (transport) PC210LC	5695 mm	4810 mm	6160 mm	5375 mm
Length on ground (transport) PC210NLC	5800 mm	5000 mm	6265 mm	5465 mm
O Overall height (to top of boom) PC210/LC	3280 mm	3135 mm	3135 mm	3165 mm
Overall height (to top of boom) PC210NLC	3190 mm	3155 mm	3155 mm	3185 mm



**PC210-11 / Max. bucket capacity and weight**

Arm length	Mono boom		Two-piece boom	
	2.4 m	2.9 m	2.4 m	2.9 m
Material weight up to 1.2 t/m <sup>3</sup>	1.59 m <sup>3</sup> 1125 kg	1.44 m <sup>3</sup> 1050 kg	1.30 m <sup>3</sup> 975 kg	1.18 m <sup>3</sup> 925 kg
Material weight up to 1.5 t/m <sup>3</sup>	1.35 m <sup>3</sup> 1000 kg	1.23 m <sup>3</sup> 950 kg	1.10 m <sup>3</sup> 875 kg	1.00 m <sup>3</sup> 825 kg
Material weight up to 1.8 t/m <sup>3</sup>	1.10 m <sup>3</sup> 925 kg	1.07 m <sup>3</sup> 850 kg	0.96 m <sup>3</sup> 800 kg	0.87 m <sup>3</sup> 750 kg

**PC210LC-11 / Max. bucket capacity and weight**

Arm length	Mono boom		Two-piece boom	
	2.4 m	2.9 m	2.4 m	2.9 m
Material weight up to 1.2 t/m <sup>3</sup>	1.68 m <sup>3</sup> 1200 kg	1.65 m <sup>3</sup> 1150 kg	1.50 m <sup>3</sup> 1075 kg	1.38 m <sup>3</sup> 1025 kg
Material weight up to 1.5 t/m <sup>3</sup>	1.53 m <sup>3</sup> 1100 kg	1.40 m <sup>3</sup> 1025 kg	1.28 m <sup>3</sup> 975 kg	1.18 m <sup>3</sup> 925 kg
Material weight up to 1.8 t/m <sup>3</sup>	1.30 m <sup>3</sup> 1000 kg	1.22 m <sup>3</sup> 925 kg	1.11 m <sup>3</sup> 875 kg	1.02 m <sup>3</sup> 850 kg

**PC210NLC-11 / Max. bucket capacity and weight**

Arm length	Mono boom		Two-piece boom	
	2.4 m	2.9 m	2.4 m	2.9 m
Material weight up to 1.2 t/m <sup>3</sup>	1.38 m <sup>3</sup> 1025 kg	1.24 m <sup>3</sup> 950 kg	1.27 m <sup>3</sup> 950 kg	1.15 m <sup>3</sup> 900 kg
Material weight up to 1.5 t/m <sup>3</sup>	1.18 m <sup>3</sup> 925 kg	1.05 m <sup>3</sup> 850 kg	1.08 m <sup>3</sup> 875 kg	0.98 m <sup>3</sup> 825 kg
Material weight up to 1.8 t/m <sup>3</sup>	1.00 m <sup>3</sup> 850 kg	0.91 m <sup>3</sup> 775 kg	0.94 m <sup>3</sup> 800 kg	0.85 m <sup>3</sup> 750 kg

Max. capacity and weight have been calculated according to ISO 10567:2007.

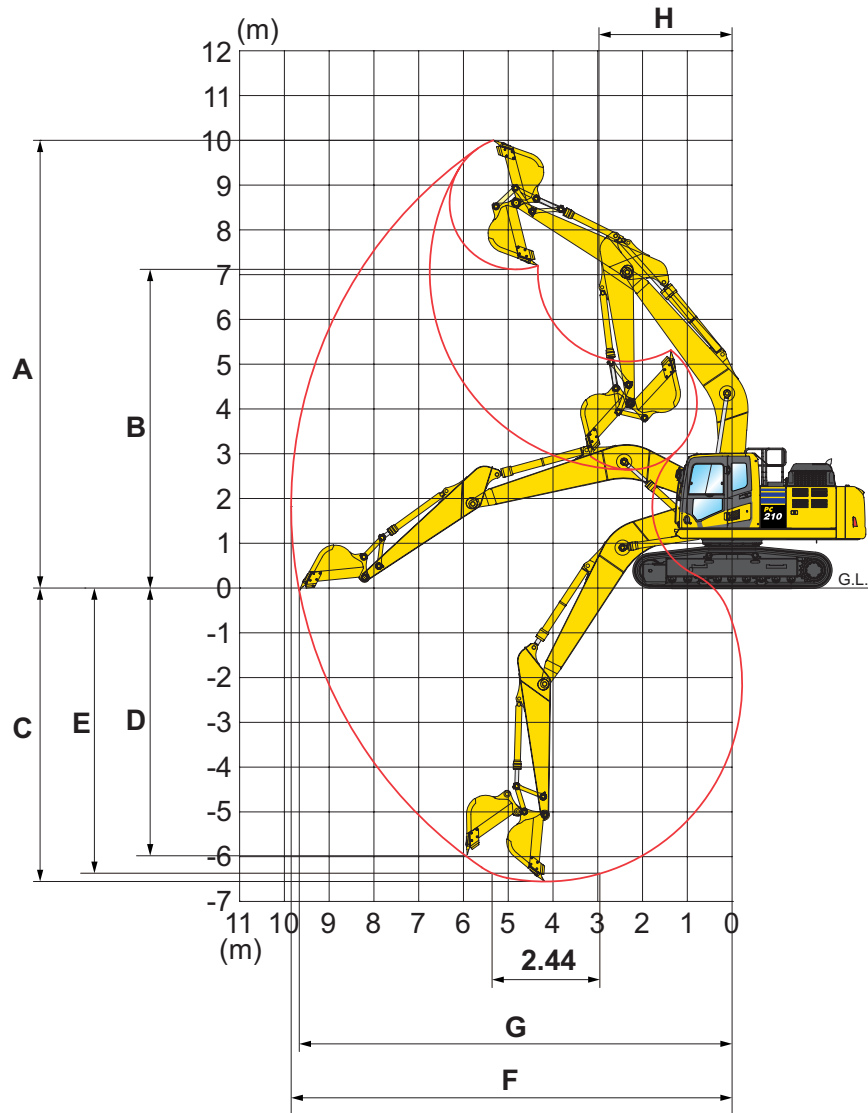
Please consult with your distributor for the correct selection of buckets and attachments to suit the application.

**Bucket and arm force**

Arm length	2.4 m	2.9 m
Bucket digging force	16500 kg	14100 kg
Bucket digging force at PowerMax	17500 kg	15200 kg
Arm crowd force	12200 kg	10300 kg
Arm crowd force at PowerMax	13000 kg	11000 kg

# Working range

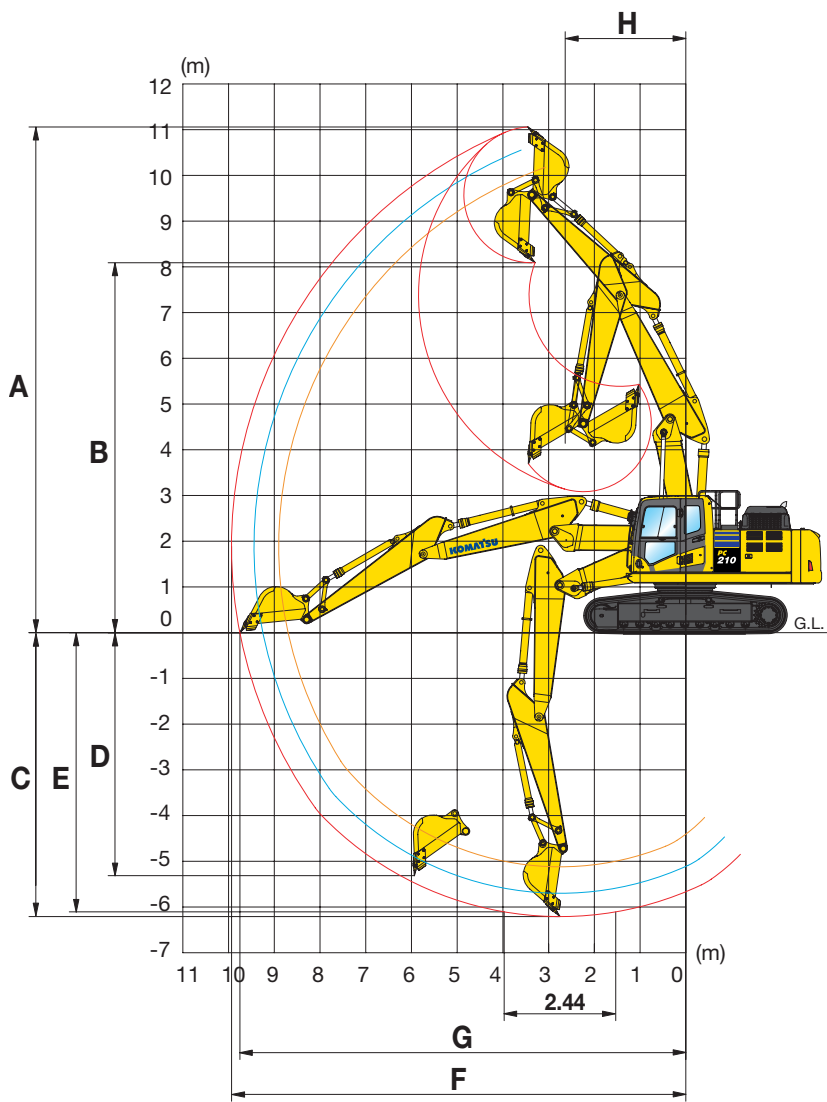
## Mono boom



**Working range**

	PC210/LC-11		PC210NLC-11	
Arm length	2.4 m	2.9 m	2.4 m	2.9 m
A Max. digging height	9800 mm	10000 mm	9740 mm	10070 mm
B Max. dumping height	6890 mm	7110 mm	6870 mm	7190 mm
C Max. digging depth	6095 mm	6620 mm	5980 mm	6490 mm
D Max. vertical wall digging depth	5430 mm	5980 mm	5390 mm	5910 mm
E Max. digging depth of cut for 2.44 m level	5780 mm	6370 mm	5755 mm	6305 mm
F Max. digging reach	9380 mm	9875 mm	9355 mm	9850 mm
G Max. digging reach at ground level	9190 mm	9700 mm	9160 mm	9655 mm
H Min. swing radius	3090 mm	3040 mm	3065 mm	2975 mm
I Max. height at min. swing radius	8080 mm	8005 mm	8130 mm	8085 mm

Two-piece boom



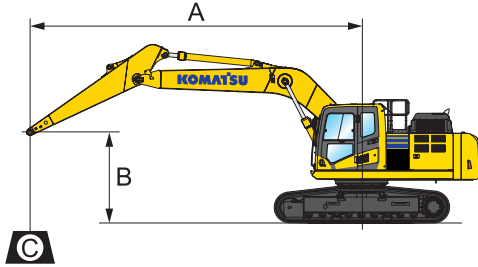
Working range

PC210/LC-11

PC210NLC-11

Arm length	2.4 m	2.9 m	2.4 m	2.9 m
A Max. digging height	10590 mm	11060 mm	10605 mm	11060 mm
B Max. dumping height	7625 mm	8090 mm	7640 mm	8090 mm
C Max. digging depth	5710 mm	6210 mm	5695 mm	6210 mm
D Max. vertical wall digging depth	4750 mm	5250 mm	4735 mm	5250 mm
E Max. digging depth of cut for 2.44 m level	5600 mm	6105 mm	5600 mm	6105 mm
F Max. digging reach	9415 mm	9935 mm	9415 mm	9935 mm
G Max. digging reach at ground level	9720 mm	9750 mm	9221 mm	9750 mm
H Min. swing radius	2830 mm	2640 mm	2830 mm	2640 mm

# Lifting capacity



A – Reach from swing center

B – Bucket hook height

C – Lifting capacities

– Rating over front

– Rating over side

– Rating at maximum reach

Weights:

With 2.4 m arm: bucket linkage and bucket cylinder: 359 kg

With 2.9 m arm: bucket linkage and bucket cylinder: 335 kg

## PC210-11 Mono boom

With 600 mm shoes

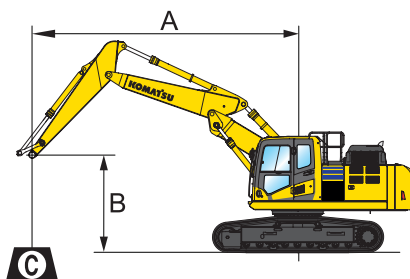
Arm length	A				7.5 m		6.0 m		4.5 m		3.0 m		1.5 m	
	B													
<p>2.4 m</p>	7.5 m	kg	*6100	5960										
	6.0 m	kg	*5700	4350			*7200	5200	*7430	*7430				
	4.5 m	kg	5130	3660			7160	5050	*9080	*7700	*12410	*12410		
	3.0 m	kg	4690	3330	4980	3530	6920	4830	10720	7170				
	1.5 m	kg	4550	3210	4880	3440	6680	4620	10220	6740				
	0.0 m	kg	4670	3280	4810	3370	6530	4480	9990	6540				
	-1.5 m	kg	5140	3590			6480	4440	9950	6510	*12410	12170		
-3.0 m	kg	6310	4350			6570	4520	10060	6600	*17480	12380			
-4.5 m	kg													

<p>2.9 m</p>	7.5 m	kg	*4060	*4060			*4660	*4660						
	6.0 m	kg	*3820	*3820			*6500	5270						
	4.5 m	kg	*3800	3320	5100	3640	*7210	5110	*8140	7840				
	3.0 m	kg	*3930	3040	4990	3530	6960	4860	10510	7290				
	1.5 m	kg	4170	2940	4870	3420	6690	4620	10280	6780				
	0.0 m	kg	4260	2990	4770	3330	6500	4450	6690	6500	*7200	*7200		
	-1.5 m	kg	4620	3220	4740	3300	6420	4370	9860	6420	*11680	*11680	*7480	*7480
	-3.0 m	kg	5470	3790			6450	4400	9920	6470	*17930	12120	*12100	*12100
	-4.5 m	kg	7780	5280					*10160	6680	*15170	12490		

\* Load is limited by hydraulic capacity rather than tipping. Ratings are based on SAE Standard No. J1097.

Rated loads do not exceed 87% of hydraulic lift capacity or 75% of tipping load. Lifting capacity stated is based on lifting with bare arm.


When lifting with additional equipment installed to the arm, please subtract the weight of all additional equipment from the values stated.




**A** – Reach from swing center

**B** – Bucket hook height

**C** – Lifting capacities

 – Rating over front

 – Rating over side

 – Rating at maximum reach

Weights:

With 2.4 m arm: bucket linkage












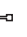

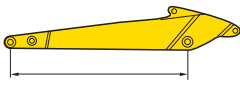
and bucket cylinder: 359 kg


With 2.9 m arm: bucket linkage

and bucket cylinder: 335 kg

## PC210-11 Two-piece boom

With 600 mm shoes

Arm length	<b>A</b>				7.5 m		6.0 m		4.5 m		3.0 m		1.5 m	
	<b>B</b>													
 2.4 m	7.5 m	kg	*5850	*5850						*7800	*7800			
	6.0 m	kg	*5350	4250			*6350	5200	*8000	*8000				
	4.5 m	kg	5050	3550			*6700	5050	*9050	7800				
	3.0 m	kg	4600	3250	4900	3450	6900	4800	10700	7150				
	1.5 m	kg	4450	3100	4800	3350	6600	4550	10150	6650				
	0.0 m	kg	4600	3200	4750	3300	6450	4400	9900	6450				
	-1.5 m	kg	5050	3500			6400	4400	9900	6450	*12150	*12150		
-3.0 m	kg													

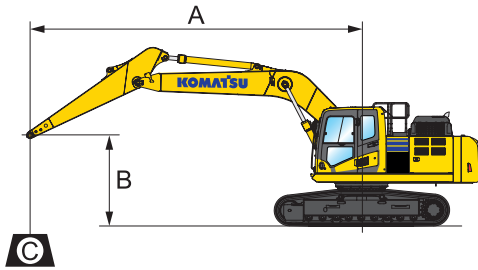
 2.9 m	7.5 m	kg	*3600	*3600			*4350	*4350	*6400	*6400		
	6.0 m	kg	*3300	*3300			*5750	5100	*6850	*6850		
	4.5 m	kg	*3200	3050	4850	3350	*6000	4850	*8000	7650	*10700	*10700
	3.0 m	kg	*3250	2750	4700	3200	*6550	4550	9850	6850		
	1.5 m	kg	*3400	2600	4500	3100	6300	4250	9800	6350		
	0.0 m	kg	*3800	2650	4400	2950	6050	4050	9450	6000	*7150	*7150
	-1.5 m	kg	4300	2900	4400	2950	6000	3950	9350	5950	*11700	11400
-3.0 m	kg											

\* Load is limited by hydraulic capacity rather than tipping. Ratings are based on SAE Standard No. J1097.

Rated loads do not exceed 87% of hydraulic lift capacity or 75% of tipping load. Lifting capacity stated is based on lifting with bare arm.

When lifting with additional equipment installed to the arm, please subtract the weight of all additional equipment from the values stated.

# Lifting capacity



A – Reach from swing center

B – Bucket hook height

C – Lifting capacities

– Rating over front

– Rating over side

– Rating at maximum reach

Weights:

With 2.4 m arm: bucket linkage and bucket cylinder: 359 kg

With 2.9 m arm: bucket linkage and bucket cylinder: 335 kg

## PC210LC-11 Mono boom

With 700 mm shoes

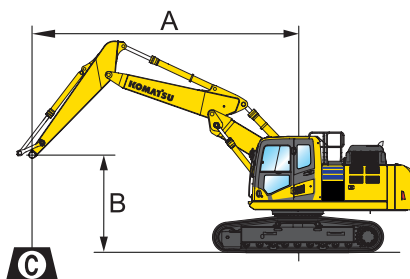
Arm length	A				7.5 m		6.0 m		4.5 m		3.0 m		1.5 m	
	B													
<p>2.4 m</p>	7.5 m	kg	*6100	*6100										
	6.0 m	kg	*5700	4830			*7200	5770	7430	7430				
	4.5 m	kg	*5660	4070			*7810	5620	*9080	8610	*12410	*12410		
	3.0 m	kg	5520	3710	5870	3940	8220	5390	*11420	8060				
	1.5 m	kg	5370	3590	5770	3840	7970	5180	12480	7610				
	0.0 m	kg	5530	3670	5700	3780	7810	5040	12230	7410				
	-1.5 m	kg	6100	4020			7760	4990	12190	7380	*12410	*12410		
	-3.0 m	kg	7520	4880			7850	5070	12310	7470	*17480	14310		
	-4.5 m	kg												

<p>2.9 m</p>	7.5 m	kg	*4060	*4060			*4660	*4660						
	6.0 m	kg	*3820	*3820			*6500	5840						
	4.5 m	kg	*3800	3700	*5770	4050	*7210	5670	*8140	*8140				
	3.0 m	kg	*3930	3400	5890	3940	8260	5430	*10510	8180				
	1.5 m	kg	*4210	3290	5760	3820	7980	5180	12560	7660				
	0.0 m	kg	*4720	3350	5650	3730	7780	5000	12210	7370	*7200	*7200		
	-1.5 m	kg	5480	3620	5620	3700	7690	4920	12100	7280	*11680	*11680	*7480	*7480
	-3.0 m	kg	6520	4250			7730	4950	12170	7340	*17930	14040	*12100	*12100
	-4.5 m	kg	*8800	5940					*10890	7560	*15170	14430		

\* Load is limited by hydraulic capacity rather than tipping. Ratings are based on SAE Standard No. J1097.

Rated loads do not exceed 87% of hydraulic lift capacity or 75% of tipping load. Lifting capacity stated is based on lifting with bare arm.

When lifting with additional equipment installed to the arm, please subtract the weight of all additional equipment from the values stated.



**A** - Reach from swing center

**B** - Bucket hook height

**C** - Lifting capacities

- Rating over front

- Rating over side

- Rating at maximum reach

Weights:

With 2.4 m arm: bucket linkage

and bucket cylinder: 359 kg

With 2.9 m arm: bucket linkage

and bucket cylinder: 335 kg

## PC210LC-11 Two-piece boom

With 600 mm shoes

Arm length	<b>A</b>				7.5 m		6.0 m		4.5 m		3.0 m		1.5 m	
	<b>B</b>													
 2.4 m	7.5 m	kg *5850	*5850						*7800	*7800				
	6.0 m	kg *5350	4800				*6350	5850	*8000	*8000				
	4.5 m	kg *5250	4050				*6700	5700	*9050	8800				
	3.0 m	kg *5300	3650	*5550	3950	*7300	5450	*11350	8150					
	1.5 m	kg 5350	3550	5800	3850	8000	5200	12600	7650					
	0.0 m	kg 5500	3650	5700	3750	7850	5050	12300	7450					
	-1.5 m	kg 6100	4000			7800	5000	*11750	7450	*12150	*12150			
-3.0 m	kg													

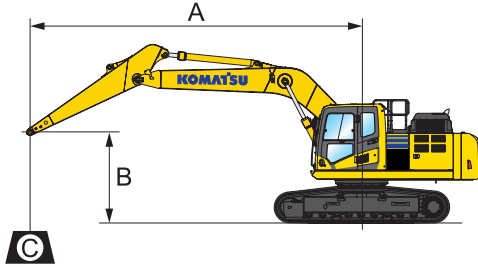
 2.9 m	7.5 m	kg *3600	*3600			*4350	*4350	*6400	*6400				
	6.0 m	kg *3300	*3300			*5750	5750	*6850	*6850				
	4.5 m	kg *3200	*3200	*4850	3850	*6000	5500	*8000	*8000	*10700	*10700		
	3.0 m	kg *3250	2150	*5000	3700	*6550	5150	*9850	7950				
	1.5 m	kg *3400	3000	*5250	3550	*7300	4850	12250	7300				
	0.0 m	kg *3800	3050	5400	3450	7450	4650	11850	7000	*7150	*7150		
	-1.5 m	kg *4450	3350	5350	3400	7400	4600	11750	6900	*11700	*11700		
-3.0 m	kg												

\* Load is limited by hydraulic capacity rather than tipping. Ratings are based on SAE Standard No. J1097.

Rated loads do not exceed 87% of hydraulic lift capacity or 75% of tipping load. Lifting capacity stated is based on lifting with bare arm.

When lifting with additional equipment installed to the arm, please subtract the weight of all additional equipment from the values stated.

# Lifting capacity



A – Reach from swing center

B – Bucket hook height

C – Lifting capacities

– Rating over front

– Rating over side

– Rating at maximum reach

Weights:

With 2.4 m arm: bucket linkage and bucket cylinder: 359 kg

With 2.9 m arm: bucket linkage and bucket cylinder: 335 kg

## PC210NLC-11 Mono boom

With 500 mm shoes

Arm length	A				7.5 m		6.0 m		4.5 m		3.0 m		1.5 m	
	B													
<p>2.4 m</p>	7.5 m	kg	*5950	5550										
	6.0 m	kg	*5600	4000			*7050	4800	*7300	*7300				
	4.5 m	kg	*5600	3350			*7700	4650	*8950	7100	*12300	*12300		
	3.0 m	kg	5400	3050	5750	3200	8050	4400	*11300	6550				
	1.5 m	kg	5250	2900	5650	3100	7800	4200	12250	6100				
	0.0 m	kg	5400	2950	5550	3050	7650	4050	11750	5900				
	-1.5 m	kg	6000	3250			7600	4000	11750	5900	*12750	10900		
	-3.0 m	kg	7450	4000				7700	4100	12100	6000	*17200	11100	
-4.5 m	kg													

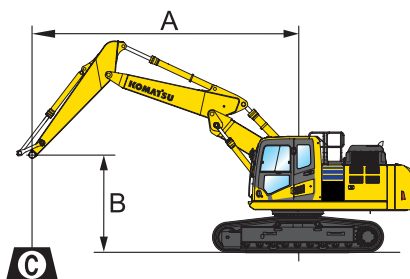
<p>2.9 m</p>	7.5 m	kg	*4000	*4000			*4650	*4650						
	6.0 m	kg	*3800	3550			*6400	4900						
	4.5 m	kg	*3750	3050	*5750	3350	*7100	4750	*8050	7300				
	3.0 m	kg	*3900	2800	5800	3250	8150	4500	*10400	6700				
	1.5 m	kg	*4200	2650	5650	3100	7850	4250	12400	6200				
	0.0 m	kg	*4700	2700	5550	3000	7650	4050	11750	5900	*7200	*7200		
	-1.5 m	kg	5400	2950	5500	3000	7550	3950	11750	5800	*11700	10650	*7500	*7500
	-3.0 m	kg	6400	3450			7600	4000	12000	5850	*17950	10850	*12100	*12100
-4.5 m	kg	*8650	4850						*10700	6100	*14900	11250		

\* Load is limited by hydraulic capacity rather than tipping. Ratings are based on SAE Standard No. J1097.

Rated loads do not exceed 87% of hydraulic lift capacity or 75% of tipping load. Lifting capacity stated is based on lifting with bare arm.

When lifting with additional equipment installed to the arm, please subtract the weight of all additional equipment from the values stated.





**A** – Reach from swing center

**B** – Bucket hook height

**C** – Lifting capacities

– Rating over front

– Rating over side

– Rating at maximum reach

Weights:

With 2.4 m arm: bucket linkage

and bucket cylinder: 359 kg

With 2.9 m arm: bucket linkage

and bucket cylinder: 335 kg

## PC210NLC-11 Two-piece boom

With 500 mm shoes

Arm length	<b>A</b>				7.5 m		6.0 m		4.5 m		3.0 m		1.5 m	
	<b>B</b>													
 2.4 m	7.5 m	kg *5800	5350							*7800	7650			
	6.0 m	kg *5350	3900				*6350	4750	*8000	7550				
	4.5 m	kg *5250	3250				*6700	4600	*9050	7100				
	3.0 m	kg 5200	2950	*5500	3150	*7300	4350	*11400	6500					
	1.5 m	kg 5050	2850	5450	3050	7600	4150	11500	6000					
	0.0 m	kg 5200	2900	5400	3000	7400	4000	11650	5800					
	-1.5 m	kg 5750	3200			7350	3950	11600	5800	*12200	10750			
-3.0 m	kg													

 2.9 m	7.5 m	kg *3600	*3600			*4400	*4400	*6400	*6400				
	6.0 m	kg *3300	3300			*5750	4650	*6850	*6850				
	4.5 m	kg *3200	2750	*4850	3050	*6000	4400	*8000	6950	*10850	*10850		
	3.0 m	kg *3250	2450	*5000	2900	*6600	4100	*9900	6250				
	1.5 m	kg *3400	2350	5150	2750	7250	3800	11550	5650				
	0.0 m	kg *3800	2400	5050	2650	7000	3600	11150	5350	*7150	*7150		
	-1.5 m	kg *4450	2600	5050	2650	6950	3550	11050	5300	*11750	10000		
-3.0 m	kg												

\* Load is limited by hydraulic capacity rather than tipping. Ratings are based on SAE Standard No. J1097.

Rated loads do not exceed 87% of hydraulic lift capacity or 75% of tipping load. Lifting capacity stated is based on lifting with bare arm.

When lifting with additional equipment installed to the arm, please subtract the weight of all additional equipment from the values stated.

# Standard and optional equipment

## Engine

Komatsu SAA6D107E-3 turbocharged common rail direct injection diesel engine	●
EU Stage V compliant	●
Suction type cooling fan with radiator fly screen	●
Automatic engine warm-up system	●
Engine overheat prevention system	●
Fuel control dial	●
Auto-deceleration function	●
Adjustable idle shutdown	●
Engine key stop	●
Engine ignition can be password secured on request	●
Alternator 24 V / 90 A	●
Starter motor 24 V / 5.5 kW	●
Batteries 2 × 12 V / 180 Ah	●

## Hydraulic system

Electronic closed-centre load sensing (E-CLSS) hydraulic system (HydraMind)	●
Pump and engine mutual control (PEMC) system	●
6-working mode selection system; Power mode, Economy mode, Breaker mode, Attachment Power and Attachment Economy mode, and Lifting/Fine Operation mode	●
PowerMax function	●
PPC wrist control levers for arm, boom, bucket and swing, with sliding proportional control for attachments and 3 auxiliary buttons	●
Prepared for hydraulic quick-coupler	●
Additional hydraulic functions	○
Komatsu Integrated Attachment Control (KIAC)	○

## Undercarriage

Track roller guards	●
Track frame under-guards	●
500, 600, 700, 800, 900 mm triple grouser shoes	○
Full length track roller guards	○

## Drives and brakes

Hydrostatic, 3-speed travel system with automatic shift and planetary gear type final drives, and hydraulic travel and parking brakes	●
PPC control levers and pedals for steering and travel	●

## Cabin

Reinforced safety SpaceCab™; highly pressurised and tightly sealed hyper viscous mounted cab with tinted safety glass windows, large roof window with sun shade, pull-up type front window with locking device, removable lower window, front window wiper with intermittent feature, sun roller blind, cigarette lighter, ashtray, luggage shelf, std. floor mat, additional floor mat	●
Heated, high-back air-suspended seat with lumbar support, console mounted height adjustable arm rests, and retractable seat belt	●
Automatic climate control system	●
12 / 24 Volt power supplies	●
USB-A / USB-C power supplies	●
Utility bar	●
Beverage holder and magazine rack	●
Hot and cool box	●
DAB+ radio with Bluetooth®, USB, AUX and hands-free kit	●
Premium comfort seat	○
Lower wiper	○
Rain visor (not with OPG)	○

## Service and maintenance

Automatic fuel line de-aeration	●
Double element type air cleaner with dust indicator and auto dust evacuator	●
Komtrax – Komatsu wireless monitoring system (4G)	●
Komatsu Care – a maintenance program for Komatsu customers	●
Multifunction video compatible colour monitor with Equipment Management and Monitoring System (EMMS) and efficiency guidance	●
Toolkit	●
Service points	●
Automatic greasing system	○

## LED lighting system

Working lights: 2 revolving frame, 1 boom (l.h.)	●
Coming home light function	●
Additional working lights (#1): 2 cab roof (front), 1 cab roof (rear), 1 boom (r.h.), 1 counterweight, beacon	○
Additional working lights (#2): 4 cab roof (front), 1 cab roof (rear), 1 boom (r.h.), 1 counterweight, 2 boom cylinders, 2 revolving frame (l.h. + r.h.), beacon	○

## Safety equipment

KomVision surround view system	●
Electric horn	●
Overload warning device	●
Audible travel alarm	●
Boom safety valves	●
Large handrails	●
Rear-view mirrors (for cab adjustable without tools)	●
Battery main switch	●
ROPS compliant to ISO 12117-2:2008	●
Emergency engine stop switch	●
Seat belt caution indicator	●
Neutral position detection system	●
Arm safety valve	●
OPG Level II front guard (FOPS), hinged type	○
OPG Level II top guard (FOPS)	○

## Work equipment

Mono boom	○
Two-piece boom	○
Bucket linkage with lifting eye	○
2.4 m; 2.9 m arms	○
Komatsu buckets	○
Komatsu breakers	○

## Other equipment

Standard counterweight	●
Remote greasing for swing circle and pins	●
Electric refuelling pump with automatic shut-off function	●
Biodegradable oil for hydraulic system	○
Customised paint	○

Further equipment on request

- standard equipment
- optional equipment



A wide range of buckets and attachments is available. Your Komatsu distributor is ready to assist you with the selection of suitable options.

This specification sheet may contain attachments and optional equipment that are not available in your area. Please consult your local Komatsu distributor for those items you may require. Materials and specifications are subject to change without notice.

---

Your Komatsu partner:

**KOMATSU**

[komatsu.eu](https://www.komatsu.eu)

