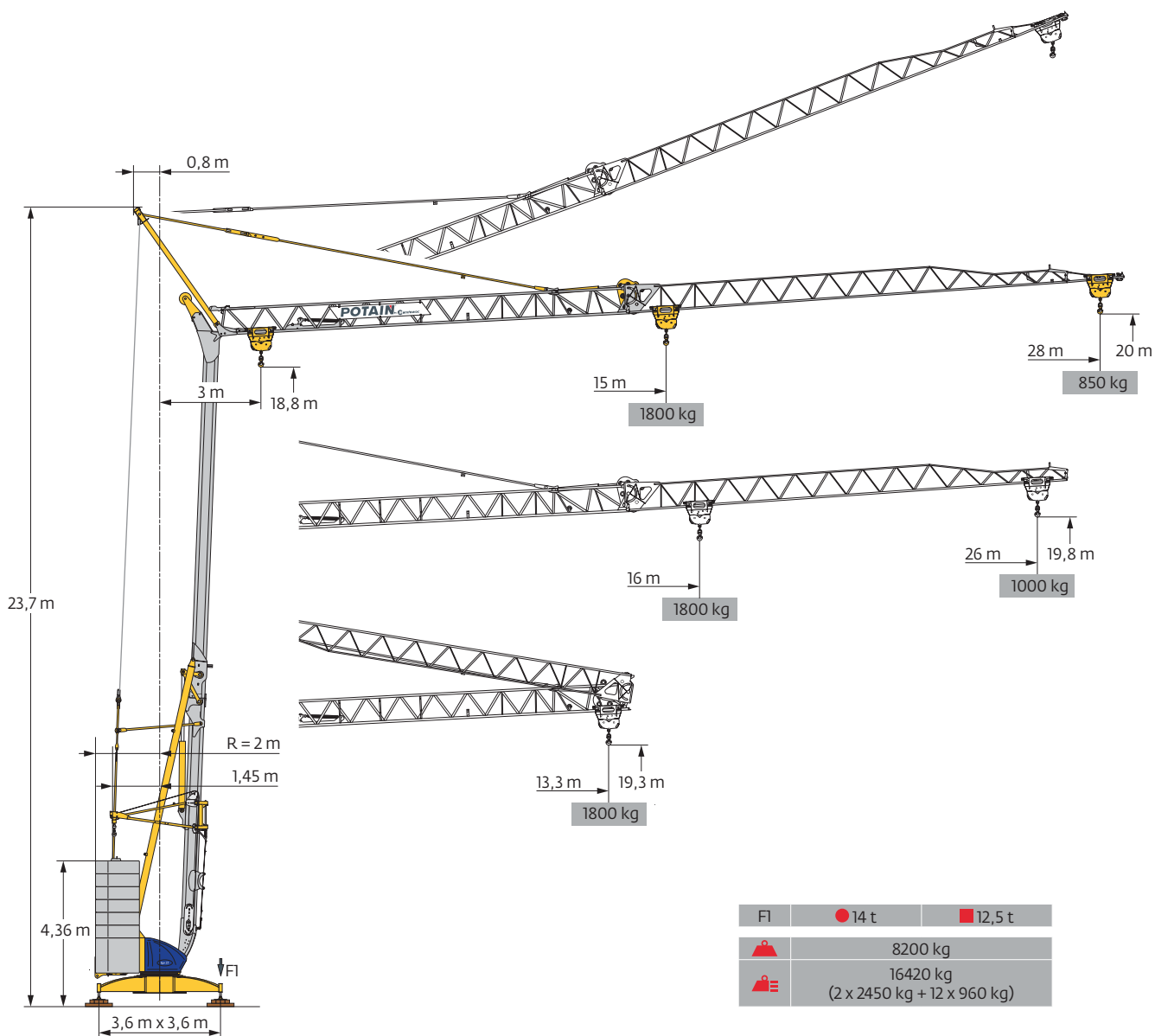
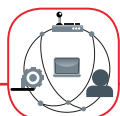


Potain Igo 22



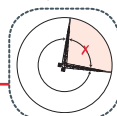
SmartCom



Hydraulic Levelling



Top Zone



EN 14439 C25-D25
EN 14439 C50-D50
FEM 1.001-A3

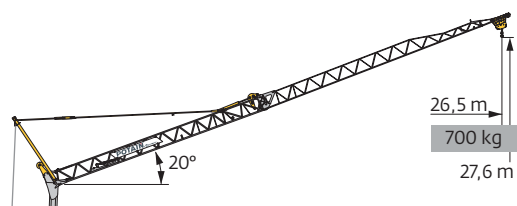
Courbes de charges / Lastkurven / Load curves / Curvas de cargas / Curve di carico
 Curvas de carga / Кривые нагрузок



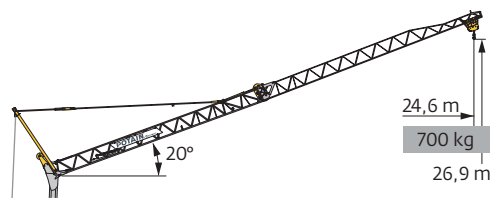
28 m	3	▶	13,3 m	
▲▲▲	☐		1800 kg	
26 m	3	▶	13,3 m	
▲▲▲	☐		1800 kg	



3	▶	15	16	17	18	19	20	21	22	23	24	25	26	27	28	m
		1800	1670	1555	1450	1360	1275	1205	1140	1080	1025	975	930	890	850	kg
3	▶		16	17	18	19	20	21	22	23	24	25	26			m
			1800	1665	1555	1455	1370	1290	1220	1160	1100	1050	1000			kg







28 m	3	▶														26,5 m
▲▲▲	☐															700 kg



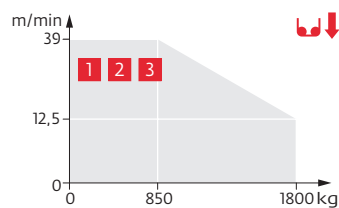
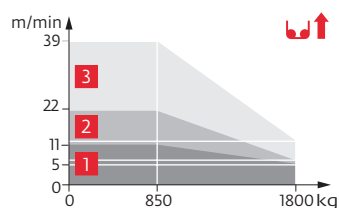
26 m	3	▶														24,6 m
▲▲▲	☐															700 kg

Mécanismes / Triebwerke / Mechanisms / Mecanismos / Meccanismi
 Mecanismos / Механизмы

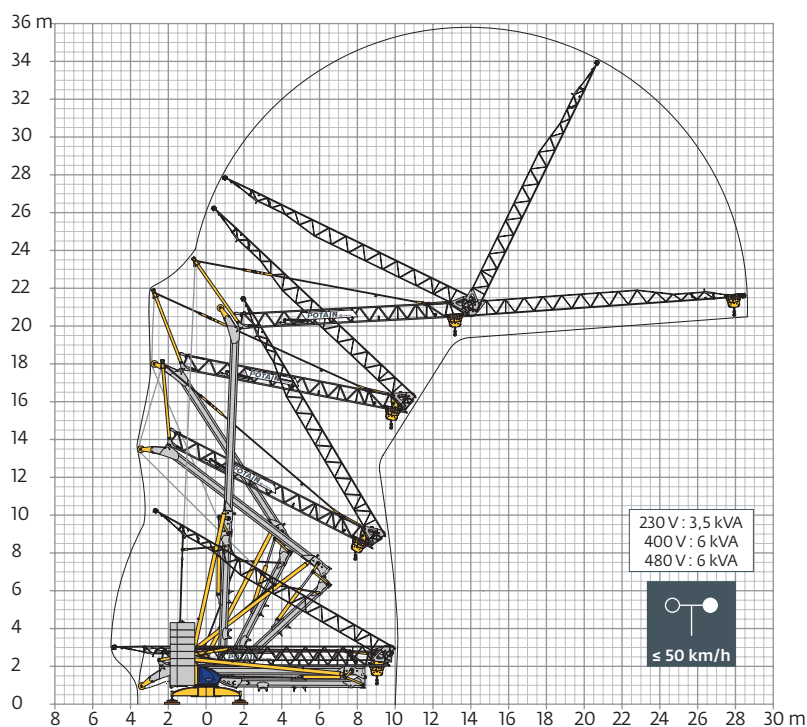
230 V - 50 Hz 400 V - 50 Hz 480 V - 60 Hz							ch - PS hp	kW	
	8 LVF 9 Optima	230 V \pm 20 A 1	m/min	\updownarrow 3,5	\uparrow 5 \downarrow 12,5	\uparrow 11 \downarrow 39	3,3	2,4	
			kg	1800	1800	850			
			230 V \pm 32 A 2	m/min	\updownarrow 3,5	\uparrow 6,5 \downarrow 12,5	\uparrow 22 \downarrow 39	5,2	3,8
			kg	1800	1800	850			
			400 V 3	m/min	\updownarrow 3,5	\downarrow 12,5	\downarrow 39	7,5	5,5
			480 V	kg	1800	1800	850		
	1 DVF 4		m/min	14 \rightarrow 28 (850 \rightarrow 1800 kg) 14 \rightarrow 36 (0 \rightarrow 850 kg)			1,5	1,1	
	RVF 31		tr/min U/min rpm	0 \rightarrow 0,8			2	1,5	

 IEC 60204-32	 kVA
230 V (+10% -10%) 50 Hz 400 V (+10% -10%) 50 Hz 480 V (+6% -10%) 60 Hz	230 V 20 A : 4,6 kVA 230 V 32 A : 7,4 kVA 400 V / 480 V : 11 kVA

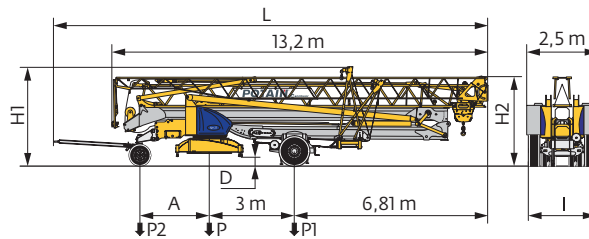
8 LVF 9 Optima



Montage / Montage / Erection / Montaje / Montaggio
 Montagem / Монтаж



Transport / Transport / Transport / Transporte / Trasporto
Transporte / Транспортировка



	km/h	A (m)	D (m)	H1 (m)	H2 (m)	L (m)	I (m)	P (kg)	P1 (kg)	P2 (kg)
DS62/S81	10	2,35	0,36/0,21	3,5/3,35	3,18/3,03	14,48	2,2	13650	8500	5150
DJ100/S125	25	2,45	0,38/0,23	3,52/3,37	3,2/3,05	14,77	2,4	14780	9120	5660
..... /.....										

FR

DE

EN

ES

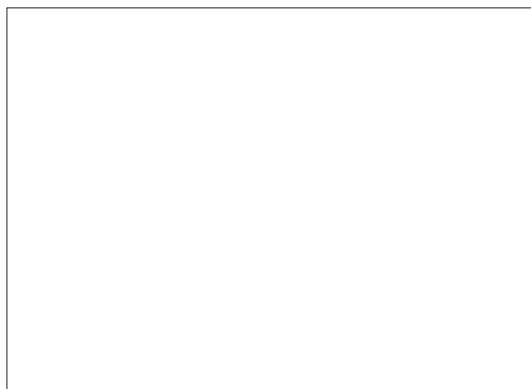
IT

PT

RU

R	Rayon de giration	Schwenk radius	Rear slewing radius	Radio de giro	Raggio di rotazione	Raio de rotação	Задний габарит
i	Nous consulter	Auf Anfrage	Consult us	Consultarnos	Consultateci	Consultar-nos	Проконсультируйтесь у нас
●	Réactions en service	Reaktionskräfte in Betrieb	Reactions in service	Reacciones en servicio	Reazioni in servizio	Reacções em serviço	Реакция при работе
■	Réactions hors service	Reaktionskräfte außer Betrieb	Reactions out of service	Reacciones fuera de servicio	Reazioni fuori servizio	Reacções fora de serviço	Реакция в покое
▲	Poids à vide, sans lest, sans trains de transport, avec flèche maxi. et hauteur standard.	Gewicht ohne Last, ohne Ballast, ohne Transportachsen, mit max. Auslager und Standardhöhe	Weight without load, without ballast, without transport axes, with max. jib and standard height	Peso en vacío, sin lastre, sin trenes de transporte con flecha y altura estandar	Peso a vuoto, senza zavorra, senza assali di trasporto, con braccio max e altezza standard.	Peso em vazio, sem lastro, sem eixos de transporte com lança máxima e altura standard.	Вес без груза, без балласта, без осей для транспортировки, с максимальным вылетом стрелы и стандартной высотой
⚖	Poids total du lest	Ballast-Gesamtgewicht	Total ballast weight	Peso total del lastre	Peso totale della zavorra	Peso total do lastro	Общий вес балласта
□	Équipements standards	Standardausrüstungen	Standard equipment	Equipamiento de serie	Equipaggiamento standard	Equipamento de série	Стандартное оборудование
⊞	Équipements optionnels	Sonderausrüstungen	Options	Equipamiento opcional	Equipaggiamento in opzione	Equipamento opcional	Дополнительное оборудование (опция)
⬆	Levage	Heben	Hoisting	Elevación	Sollevamento	Elevação	Подъем
⬆	Distribution	Katzfahren	Trolleying	Distribución	Distribuzione	Distribuição	Перемещение по стреле
⦿	Orientation	Schwenken	Slewing	Orientación	Rotazione	Rotação	Поворот
⚡	50 Hz Monophasé	50 Hz Einphasige	50 Hz Single phase	50 Hz Monofasica	50 Hz Monofase	50 Hz monofásica	Однофазное напряжение 50Hz
⚡	Puissance requise	Erforderliche Leistung	Required power	Potencia Necesaria	Potenza richiesta	Potência Necessária	Потребляемая мощность

⚠	Document commercial non contractuel. Pour toute information technique se référer à la notice correspondante.	Unverbindliches Vertriebsdokument. Für technische Informationen, siehe die entsprechenden Anweisungen.	This commercial document is not legally binding. For any technical information, please refer to the corresponding instructions.	Documento comercial no contractual. Para cualquier información técnica, ver la noticia correspondiente.	Documento commerciale non vincolante, per tutte le informazioni tecniche fare riferimento al catalogo istruzioni.	Documento comercial não contratual. Para qualquer informação técnica complementar consultar as respectivas instruções.	Этот коммерческий документ не является юридически обязательным. Для получения технической информации, см. соответствующие инструкции.
----------	--	--	---	---	---	--	---



www.manitowoc.com

Americas
Manitowoc, Wisconsin, USA
Tel: +1 920 684 6621
Fax: +1 920 683 6277

Shady Grove, Pennsylvania, USA
Tel: +1 717 597 8121
Fax: +1 717 597 4062

Europe, Middle East, Africa
Dardilly, France
Tel: +33 (0)4 72 18 20 20
Fax: +33 (0)4 72 18 20 00

China
Shanghai, China
Tel: +86 21 6457 0066
Fax: +86 21 6457 4955

Greater Asia-Pacific
Singapore
Tel: +65 6264 1188
Fax: +65 6862 4040