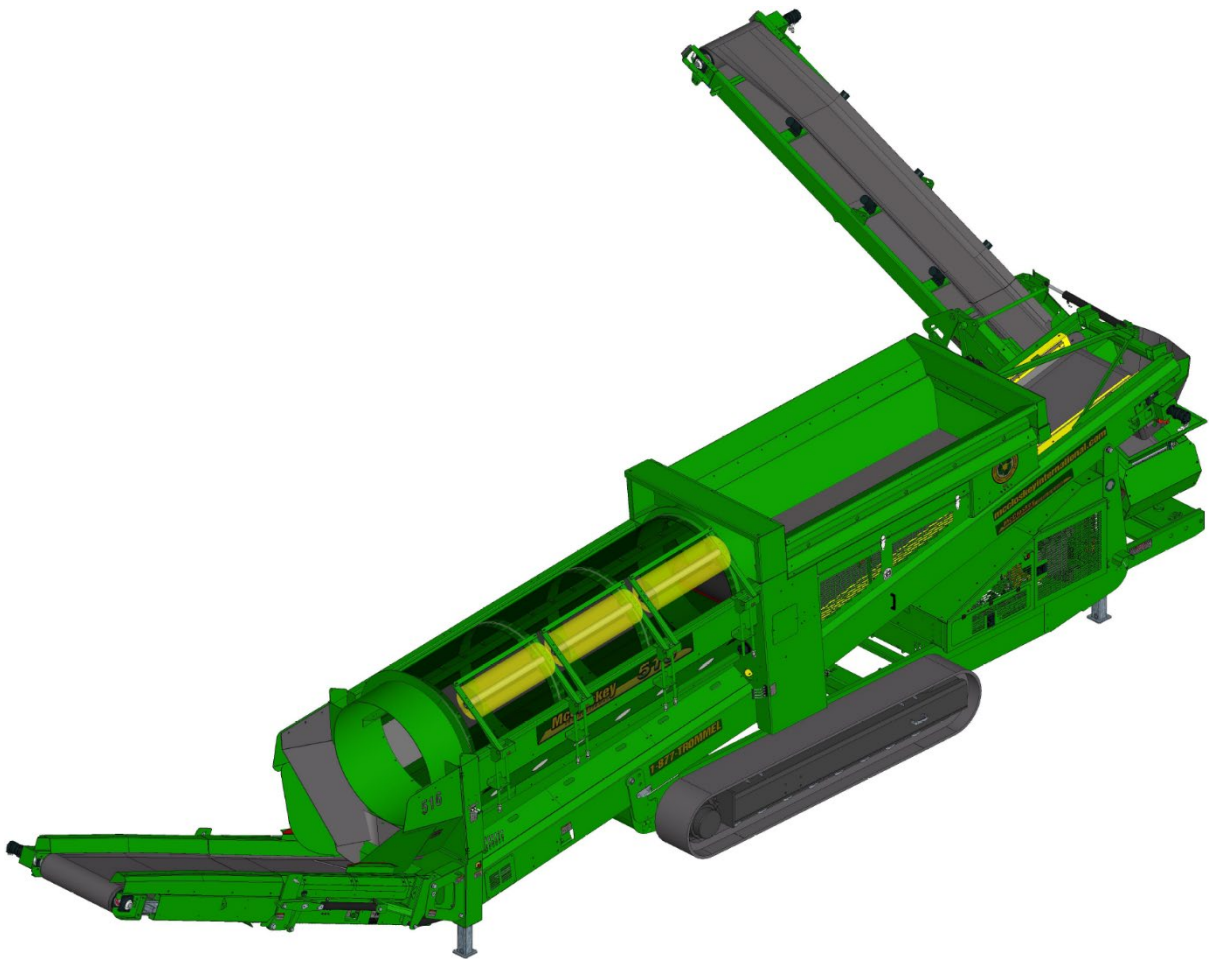
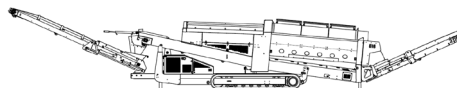


## SPECIFICATIONS

### 516RT Trommel



Note: Optional equipment may be displayed



## DESCRIPTION

Heavy duty mobile trommel with following features:

- 5' x 16' heavy duty trommel drum
- 74 kW (100 hp) diesel engine
- Track mobility
- Integrated hydraulic folding stockpiling conveyors
- Remote control radial conveyor
- Fast on-site setup time (10 minutes)

## SAFETY FEATURES

- External belt alignment points
- External grease points
- Full safety guarding for nip points

## DIMENSIONS AND WEIGHTS

### Working Dimensions

|              |                     |
|--------------|---------------------|
| Length.....  | 23.05 m (75' – 7½") |
| Width .....  | 12.86 m (42' – 2")  |
| Height ..... | 3.94 m (12' – 11")  |

### Transport Dimensions

|                       |                     |
|-----------------------|---------------------|
| Length.....           | 15.51 m (50' – 11") |
| Width .....           | 2.72 m (8' – 11")   |
| Transport Height..... | 3.56 m (11' – 8")   |
| Loading Height .....  | 3.05 m (10' – 0")   |

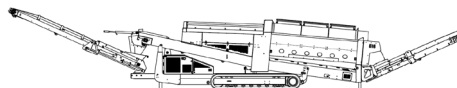
|                           |                        |
|---------------------------|------------------------|
| Weight (approximate)..... | 22 700 kg (50 000 lbs) |
|---------------------------|------------------------|

## CAPACITIES

|                               |                                          |
|-------------------------------|------------------------------------------|
| Hydraulic tank capacity ..... | 680 L (180 US gal)                       |
| Diesel tank capacity.....     | 295 L (78 US gal)                        |
| Hopper Capacity.....          | 5.25 m <sup>3</sup> (7 yd <sup>3</sup> ) |

## FEED CONVEYOR

|                          |                      |
|--------------------------|----------------------|
| Belt width .....         | 900 mm (36")         |
| Belt spec.....           | Plain 500/3 5+1.5    |
| Drive drum diameter..... | 324 mm (12 ¾")       |
| Tail drum diameter.....  | 305 mm (12")         |
| Gearbox.....             | Brevini CTD2051      |
| Gearbox ratio.....       | 34,7:1               |
| Gearbox torque.....      | 5,500 Nm cont        |
| Motor .....              | Sam Hydraulik BRZ250 |
| Flow rate.....           | 83 lpm (22 US gpm)   |
| Adjustable speed .....   | Yes                  |
| Maximum speed .....      | 10 rpm               |

**FINES CONVEYOR**

|                           |                    |
|---------------------------|--------------------|
| Belt width .....          | 1200 mm (48")      |
| Belt spec .....           | Plain 400/2 4+2    |
| Drive drum diameter ..... | 254 mm (10")       |
| Tail drum diameter .....  | 254 mm (10")       |
| Motor .....               | White RE32         |
| Flow rate .....           | 83 lpm (22 US gpm) |
| Maximum speed .....       | 157 rpm            |

**RADIAL CONVEYOR**

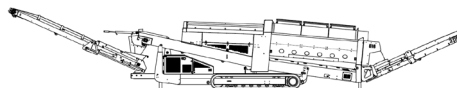
|                           |                    |
|---------------------------|--------------------|
| Stockpile height .....    | 3.94 m (12' – 11") |
| Belt width .....          | 800 mm (32")       |
| Belt spec .....           | Plain - 400/2 4+2  |
| Drive drum diameter ..... | 254 mm (10")       |
| Tail drum diameter .....  | 254 mm (10")       |
| Motor .....               | White RE32         |
| Flow rate .....           | 83 lpm (22 US gpm) |
| Maximum speed .....       | 157 rpm            |

**OVERSIZE CONVEYOR**

|                           |                    |
|---------------------------|--------------------|
| Stockpile height .....    | 2.62 m (8' – 7")   |
| Belt width .....          | 1050 mm (42")      |
| Drive drum diameter ..... | 254 mm (10")       |
| Tail drum diameter .....  | 254 mm (10")       |
| Motor .....               | White RE32         |
| Flow rate .....           | 68 lpm (18 US gpm) |
| Maximum speed .....       | 127 rpm            |
| Adjustable speed .....    | Yes                |

**TROMMEL (DRUM)**

|                                     |                                              |
|-------------------------------------|----------------------------------------------|
| Dimensions .....                    | 1.52 m x 4.88 m (5' x 16')                   |
| Screening Area .....                | 17.65 m <sup>2</sup> (190 ft <sup>2</sup> )  |
| Trommel angle .....                 | 5 deg                                        |
| Trommel motor .....                 | White DT19 (19.3 cc/rev)                     |
| Drive system .....                  | Direct drive with 18x7 rubber wheels         |
| Hydraulic flow rate .....           | 125 lpm (33 US gpm)                          |
| Trommel speed .....                 | 10 – 30 rpm                                  |
| Adjustable speed .....              | Yes                                          |
| Longitudinal Trommel Supports ..... | 4 angle type lifters                         |
| Cleaning Brushes .....              | Ground adjustable Ø16x 50" polyester brushes |

**POWERUNIT AND HYDRAULICS**

|                            |                              |
|----------------------------|------------------------------|
| Engine power.....          | 74 kW (100) hp diesel engine |
| Engine speed.....          | 2200 rpm                     |
| Flywheel pump 1 .....      | P257 64, 42, 42              |
| LH PTO pump 2.....         | P124 34, 10                  |
| Total system flow.....     | 360 lpm (95 US gpm)          |
| Hydraulic tank ratio.....  | 1.9 : 1                      |
| Hydraulic oil cooler ..... | Yes                          |

**ELECTRICS**

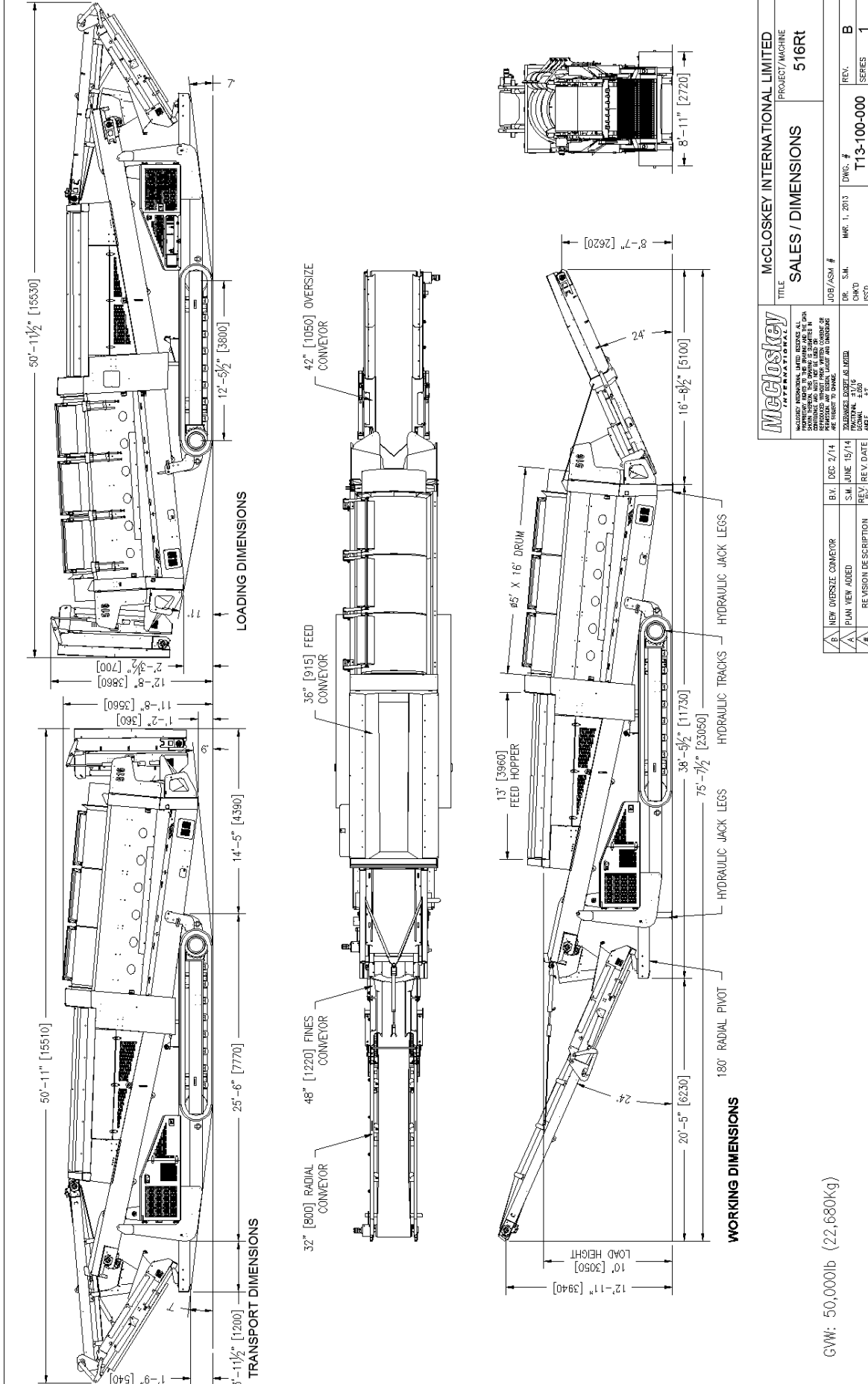
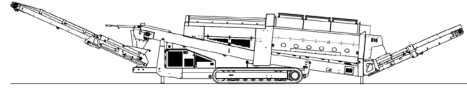
|                                    |                                     |
|------------------------------------|-------------------------------------|
| Emergency stops.....               | 4 off, 2 powerunit, 2 chassis RH&LH |
| Chassis cabling .....              | Armored cable                       |
| Start Siren.....                   | Yes – 10 sec delay                  |
| Engine room light.....             | Yes                                 |
| Remote radial .....                | Yes – 6 function timed              |
| Radio-controlled tracks.....       | Yes                                 |
| Pendant track control .....        | Yes – plugged at powerunit          |
| Engine shutdowns:                  |                                     |
| ▪ Low oil pressure                 |                                     |
| ▪ High water temperature           |                                     |
| ▪ Air filter blockage (selectable) |                                     |
| ▪ Fuel contamination               |                                     |
| ▪ Low hydraulic tank level         |                                     |

**TRACKS**

|                              |                          |
|------------------------------|--------------------------|
| Width .....                  | 500 mm (19.7")           |
| Length.....                  | 4590 mm (15'-1")         |
| Height .....                 | 795 mm (31.3")           |
| Gearbox.....                 | Bonfiglioli 707          |
| Ratio .....                  | 122:1                    |
| Motor .....                  | Rexroth 63               |
| Motor speed (max) .....      | 1.5 km/h (0.9 mph)       |
| Motor flow rate.....         | 83 lpm (22 US gpm)       |
| Ground contact pressure..... | 117 kPa (17 psi)         |
| Attachment to chassis .....  | Bolt-on for quick change |

**OPTIONS**

- Hydraulic Tipping Grid
- Double Brushes
- Auto Reversing Fan
- Auxiliary Hydraulic Circuit
- Punch Plate Screens
- Remote Feeder on/off
- Spare Drum



|                                                                                                                                                                                                                                                                                                                                                                       |  |                                                                    |  |
|-----------------------------------------------------------------------------------------------------------------------------------------------------------------------------------------------------------------------------------------------------------------------------------------------------------------------------------------------------------------------|--|--------------------------------------------------------------------|--|
|                                                                                                                                                                                                                                                                                                                                                                       |  | McCloskey INTERNATIONAL LIMITED<br>PROJECT/MACHINE<br><b>516RT</b> |  |
| McCloskey INTERNATIONAL, LIMITED RESERVES ALL RIGHTS IN THIS DRAWING. THE DRAWING IS VALID IN ANY COUNTRY WHERE THE PATENT RIGHTS OF McCloskey INTERNATIONAL ARE ENFORCED. THIS DRAWING IS THE PROPERTY OF McCloskey INTERNATIONAL AND IS NOT TO BE REPRODUCED OR TRANSMITTED IN ANY FORM OR BY ANY MEANS, WITHOUT THE WRITTEN PERMISSION OF McCloskey INTERNATIONAL. |  | TITLE<br><b>SALES / DIMENSIONS</b>                                 |  |
| JOB / ASM #                                                                                                                                                                                                                                                                                                                                                           |  | DWG. #<br><b>T13-100-000</b>                                       |  |
| DR. S.M.<br>CHK'D<br>DATE<br>MAR. 1, 2013                                                                                                                                                                                                                                                                                                                             |  | REV.<br><b>B</b>                                                   |  |
| SALES/ENGINEER AS NOTED<br>SCALE: 1" = 10'-0"<br>DRAWING # 1310<br>DATE<br>MAR. 1, 2013                                                                                                                                                                                                                                                                               |  | SERIES<br><b>1</b>                                                 |  |

GWW: 50,000lb (22,680Kg)