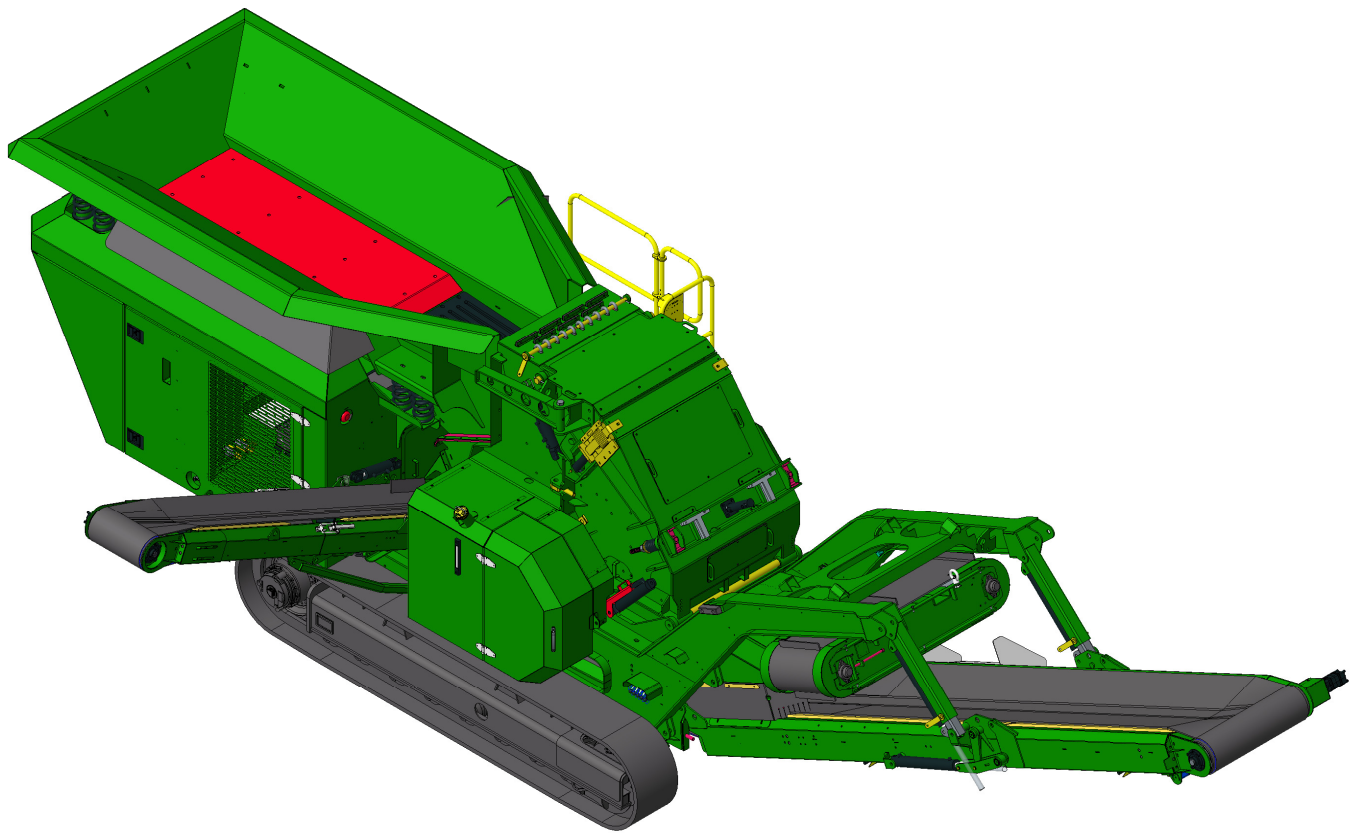
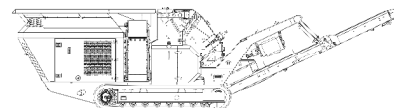


SPECIFICATIONS



McCloskey ***I34***

**DESCRIPTION**

Heavy duty track mounted Crusher with following features:

- 900mm (35.4") diameter x 820mm (32.3") wide Impactor.
- 252Hp (188kW) Volvo D8 T4 Final engine.
- Crawler Tracks.
- Integrated hydraulic folding stockpiling conveyors.
- I-beam plate fabricated chassis construction.
- Open chassis design for ease of maintenance.
- Fast setup time.
- Apron adjustment to suit either Secondary or Primary crushing.

DIMENSIONS AND WEIGHTS

Length - transport	9.315m (30' – 7")
Width - transport	2.486m (8' – 2")
Height - transport	2.982m (9' – 9")
Weight – (estimated)	23,600 Kgs (52,029lbs) inc magnet & dirt conveyor

CAPACITIES

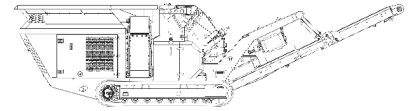
Diesel tank capacity	280L (74 US gal)
Hydraulic tank capacity	350 L (92.5 US gal)

IMPACTOR CHAMBER

Feed opening WxH	860 x 650mm, (34 x 25.6")
Impactor rotor	900mm (35.4") diameter x 820mm (32.3") wide
Crusher speed	678-756 rpm (32-35.5 m/sec rotor tip speed)
Number of aprons	1
Number of blowbars	4
Full blowbar weight	148Kg (326 lbs)
Crusher Drive	Direct Drive
Feed size	600 x 500 x 500mm lump, (24" x 20" x 20")
Impactor weight	7,150kg (15,763 lbs)
Rotor weight	1,789kg (3,944 lbs)
Closed side setting adjustment	Hydraulic rams, shim system, spring tension.
Speed sensor	YES
Load sensor	Engine load monitoring

GRIZZLY FEEDER

Feeder width	2102mm (82.8")
Feeder length	4230mm (166.5")
Drive	Hydraulic
Grizzly section opening	Tapered 30-50mm or 35-65mm
Grizzly section length	1080mm (42.5")
Motor	Turolla 42.9cc/rev
Flow rate	Up to 62 Lpm (16.4 US gpm)
Adjustable speed	Yes – via mechanical Flow Control
Maximum speed	970rpm
Volume	2.75m ³ (3.6yd ³)

**SIDE CONVEYOR**

Stockpile height	2583mm (8' – 6")
Belt width	500mm (20")
Belt spec	EP 400/3 3+1.5
Drive drum dia.	254.5mm (10")
Tail drum dia.	220mm (8.6") - spoked
Motor	OMS315
Flow rate	Up to 43.8 Lpm (11.5 US gpm)
Adjustable speed	YES
Maximum speed	Up to 139 rpm

MAIN CONVEYOR

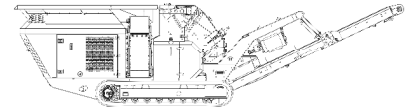
Stockpile height	3006mm (9' – 10")
Belt width	900mm (36")
Belt spec	Plain 630/2 9+3 straight warp
Drive drum dia.	256.5mm (10")
Tail drum dia.	220mm (8.6") – spoked
Motor	OMS500
Flow rate	Up to 62 Lpm (16.4 US gpm)
Maximum speed	Up to 124 rpm
Angle adjustable	YES

POWERUNIT AND HYDRAULICS

Engine	Volvo D8 Tier 4 Final or Tier 3
Engine power	188 Kw (252 HP)
Engine speed	1700 - 1900 rpm
Impactor drive clutch	PT Tech HPTO12
Flywheel Pump	Turolla 31.8/31.8/22.5
Total system flow (max)	263.7 Lpm (69.7 US Gpm)
Hydraulic tank capacity	430 L (114 US Gals)
Hydraulic tank ratio	1.6 : 1
Hydraulic Oil cooler	YES

MAGNET

Belt width	559mm (22")
Drive drum dia.	320mm (12.6")
Tail drum dia.	320mm (12.6")
Motor	OMH400
Flow rate	Up to 43.8 Lpm (11.5 US gpm)
Reversible	YES



ELECTRICS

Emergency stops	4 off, 1 powerunit, 1 chamber, 2 chassis
Chassis cabling	Armored cable
Start Siren	YES – 10 sec delay
Control panel	Tedd Engineering / IFM
Engine shutdowns:	Low oil pressure High water temp Air filter blockage (selectable) Fuel contamination Low hydraulic tank level High hydraulic return line filter backpressure High hydraulic water filter backpressure High hydraulic oil temperature
Radio control tracks and feeder	STANDARD
Pendant track control	YES – plugged in control cabinet

TRACKS

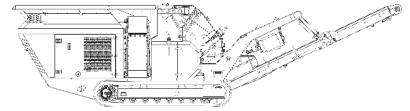
Width	400mm (15.7")
Length	3240mm (10' – 8") crs
Height	738mm (29")
Gearbox	Bonfiglioli 709 (or equivalent)
Ratio	147:1
Motor	MAG 85VP
Speed max	1.2 Kph (0.74 Mph)
Flow rate	124 Lpm (32.7 US gpm) Two speed system selectable at control panel with smooth start / stop.
Multiple speeds	
Attachment to chassis	Bolt On for quick change

OPTIONS

Main conveyor variable speed control
Overband magnet
Water Pump and dust suppression system
Various blow bar material options
Work lights
Belt Scale
Refueling pump
Half blow bar height
Hoist

SAFETY FEATURES

External belt alignment points
External grease points
Engine safety shutdown systems



Full safety guarding for nip points

