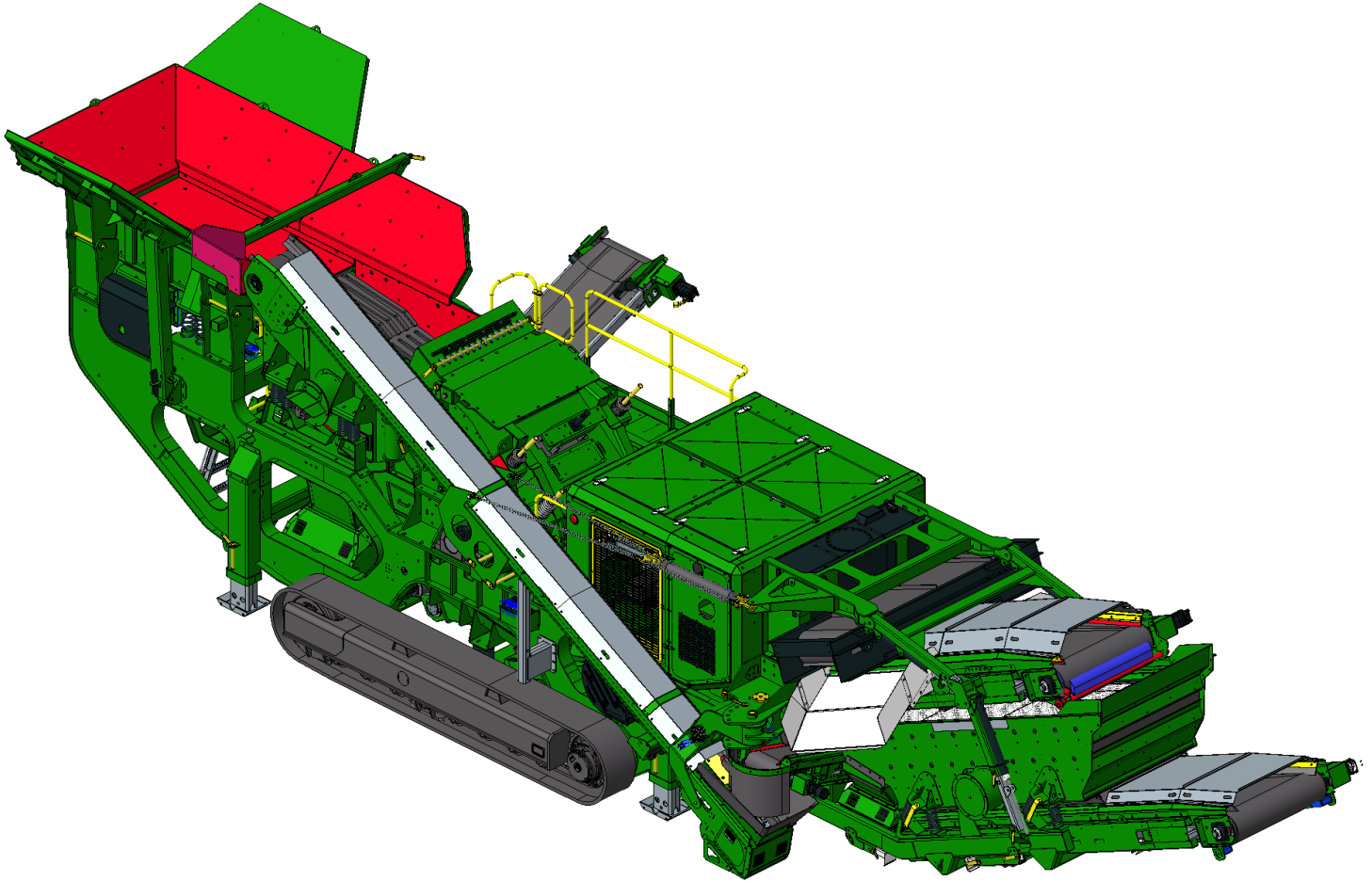
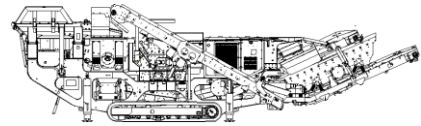


SPECIFICATIONS



McCloskey ***I44Rv3***

**DESCRIPTION**

Heavy duty track mounted Crusher with following features:

- 1050mm (41.3") diameter x 1125mm (44.3") wide Impactor.
- 360Hp Volvo D11 T4 Final engine or 350Hp CAT C9 Tier 3 engine
- Integrated hydraulic folding hopper.
- Integrated hydraulic folding stockpiling conveyors.
- I-beam plate fabricated chassis construction.
- Open chassis design for ease of maintenance
- Fast setup time
- Vibrating feeder under crusher discharge.
- 3660mm x 1525mm (12' x 5') Double Deck recirculation screen
- Swing out radial return conveyor

DIMENSIONS AND WEIGHTS

Length - transport	16.330m (53' – 6.9")
Width - transport (500 return)	3.262m (10' – 8.4")
Width - transport (650 return)	3.412m (11' – 2.2")
Height - transport	3.40m (11' – 1.8")
Weight -	53,408 Kgs (117,744lbs) inc magnet & dirt conveyor Underpan, and independent prescreen

CAPACITIES

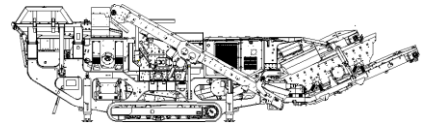
Diesel tank capacity	595L (157 US gal)
Hydraulic tank capacity	650 L (172 US gal)

IMPACTOR CHAMBER

Feed opening WxH	1149 x 708mm, (45.2 x 27.9")
Impactor rotor	1050mm (41.3") diameter x 1125mm (44.3") wide
Crusher speed	606-740 rpm (33.3-40.7 m/sec rotor tip speed)
Number of aprons	2
Number of blowbars	4
Full blowbar weight	231Kg (509 lbs)
Crusher Drive	Direct Drive
Feed size	600 x 500 x 500mm lump, (24" x 20" x 20")
Impactor weight	10,300kg (22,700 lbs)
Rotor weight	3,309kg (7,295 lbs)
Closed side setting adjustment	Hydraulic rams, shim system
Speed sensor	YES
Load sensor	Engine load monitoring

PAN FEEDER

Feeder width	1064mm (41.8")
Feeder length	2460mm (96.9")
Drive	Hydraulic
Motor	David Brown MCC 2208 59cc/rev
Flow rate	Up to 59.2 Lpm (15.6 US gpm)
Adjustable speed	Yes – via mechanical Flow Control
Variable speed	Yes – via electrical proportional pump
Maximum speed	970rpm

**DOUBLE DECK GRIZZLY PRE SCREEN**

Prescreen width (inside wearplates)	1064mm (41.9")
Prescreen length overall	2015mm (6' – 7.3")
Grizzly section opening	Tapered 40-70mm (1.6" – 2.8")
Grizzly section length	2113mm (83.2")
Bottom deck mesh	1494mm x 1060 (58.8" x 41.7")
Drive	Hydraulic
Motor	David Brown MCC 2208 58.7cc/rev
Flow rate	85.5Lpm (22.6 US gpm)
Adjustable speed	NO
Auto stop start system	YES
Maximum speed	1050rpm

HOPPER

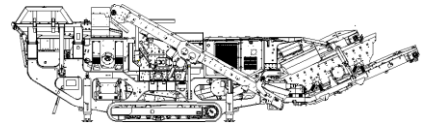
Length overall	4280mm (14' – 0.5")
Width	2180mm (7' – 1.8")
Volume	6.0m ³ (7.8yd ³)
Material	8mm sides + 10mm Hardox liners
Locking system	Hydraulic rear wedges and side hydraulic legs

SIDE CONVEYOR

Stockpile height	2488mm (8' – 2")
Belt width	650mm (26")
Belt spec	EP 400/3 3+1.5
Drive drum dia.	220mm (8.6")
Tail drum dia.	220mm (8.6") - spoked
Motor	OMT400
Flow rate	Up to 55.4 Lpm (14.6 US gpm)
Adjustable speed	YES
Maximum speed	Up to 138 rpm

MAIN CONVEYOR (with recirc removed)

Stockpile height	3529mm (11' – 6.9")
Belt width	1200mm (48")
Belt spec	Plain 500/3 8+2
Drive drum dia.	330mm (13")
Tail drum dia.	287mm (11.3") – spoked
Motor	OMV800
Flow rate	Up to 84 Lpm (22.2 US gpm)
Maximum speed	Up to 105 rpm
Angle adjustable	YES
Quick release	YES

**PAN FEEDER UNDER IMPACTOR (option)**

Width (across base plate)	1264mm (49.8")
length	2370mm (93.3")
Base liners	10mm (3/8") stainless steel
Side liners	12mm (1/2" Hardox 400
Operating angle	8°
Vibrating motor	Twin out of balance mass
Hydraulic motor	2 off Eaton 32.9cc/rev
Fixed speed	YES
Flow rate	85.5 Lpm (22.6 US gpm)

FINES CONVEYOR

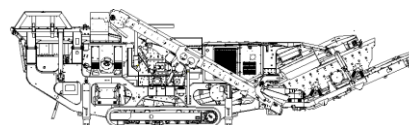
Stockpile height	2863mm (9' – 4.7")
Belt width	1200mm (48")
Belt spec	Plain 500/3 8+2
Drive drum dia.	285mm (11.2")
Tail drum dia.	270mm (10.6") - spoked
Motor	OMV630
Flow rate	Up to 72.6 Lpm (19.2 US gpm)
Maximum speed	Up to 115 rpm

SCREENBOX

Dimensions - top deck	3660mm x 1525mm (12' x 5')
Dimensions - bottom deck	3050mm x 1525mm (10' x 5')
Bearing type	NSK/RHP 22219
Screens - top deck	5' x 4' side tension - 2 off & 5' x 2' side tension - 1 off
Screens - bottom deck	5' x 4' side tension - 2 off & 5' x 2' side tension - 2 off
Tensioning - top and bottom decks	Quick release pin and wedge
Screen angle	25 deg
Screen motor	DBH MCC2208 (59cc/rev)
Drive system	Direct drive with HRC150 coupling
Hydraulic flowrate	Up to 72.6 Lpm (19.2 US gpm)
Speed adjustable	YES - Pressure compensated FCV
Screen stroke adjustable	8 - 10mm
Screen shaft speed	970 rpm
Screen 'g' force	5.05

TOP DECK TRANSFER CONVEYOR

Belt width	500mm (26")
Belt spec	Plain 400/3 4+2
Drive drum dia.	188mm (7.4")
Tail drum dia.	188mm (7.4")
Motor	OMT500
Flow rate	Up to 68.8 Lpm (18.2 US gpm)
Adjustable speed	YES
Maximum speed	Up to 138 rpm

**MIDDLE DECK CONVEYOR**

Stockpile height	2549mm (8' – 4.3")
Belt width	650mm (26")
Belt spec	Plain 400/3 4+2
Drive drum dia.	188mm (7.4")
Tail drum dia.	188mm (7.4")
Motor	OMT500
Flow rate	Up to 68.8 Lpm (18.2 US gpm)
Adjustable speed	YES
Maximum speed	Up to 138 rpm

RETURN CONVEYOR 500mm option

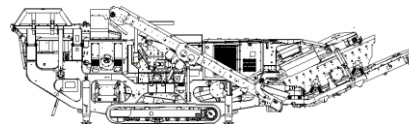
Belt width	500mm (20")
Belt spec	Chevron - 400/3 6+1.5
Drive drum dia.	290mm (11.5")
Tail drum dia. (Spoked)	270mm (10.6")
Motor	OMT500
Flow rate	Up to 68.8 Lpm (18.2 US gpm)
Adjustable speed	YES
Maximum speed	Up to 138 rpm
Radial angle	0 to 90 degrees

RETURN CONVEYOR 650mm option

Belt width	650mm (26")
Belt spec	Chevron - 400/3 6+1.5
Drive drum dia.	290mm (11.5")
Tail drum dia. (Spoked)	270mm (10.6")
Motor	OMT500
Flow rate	Up to 68.8 Lpm (18.2 US gpm)
Adjustable speed	YES
Maximum speed	Up to 138 rpm
Radial angle	0 to 90 degrees

POWERUNIT AND HYDRAULICS

Engine	Volvo D11 Tier 4 Final / CAT C9 Tier 3
Engine power	268 Kw (360 HP) / 261 kW (350 HP)
Engine speed	1600 - 1880 rpm
Impactor drive clutch	PT Tech HPTO14TF1
Flywheel Pump 1 (Tracks/Feeder)	Kawasaki K3VL80
Flywheel Pump 2 (Tracks/Main conveyor)	Kawasaki K3VL80
LH PTO Pump 3 (Prescreen/Side conv)	Turolla 29/23/07
Front PTO Pump 4 (Underpan/Pilot)	Turolla 36/07
Front PTO Pump 5 (Recirc system)	Turolla 38/36
Total system flow (max)	494.9 Lpm (130.7 US Gpm)
Hydraulic tank capacity	650 L (172 US Gals)
Hydraulic tank ratio	1.31 : 1
Hydraulic Oil cooler	YES

**ELECTRICS**

Emergency stops	4 off, 2 feeder, 2 powerunit
Chassis cabling	Armored cable
Start Siren	YES – 10 sec delay
Control panel	Tedd Engineering / IFM
Engine shutdowns:	Low oil pressure High water temp Air filter blockage (selectable) Fuel contamination Low hydraulic tank level High hydraulic return line filter backpressure High hydraulic water filter backpressure High hydraulic oil temperature
Radio control tracks and feeder	STANDARD
Pendant track control	YES – plugged in control cabinet

TRACKS

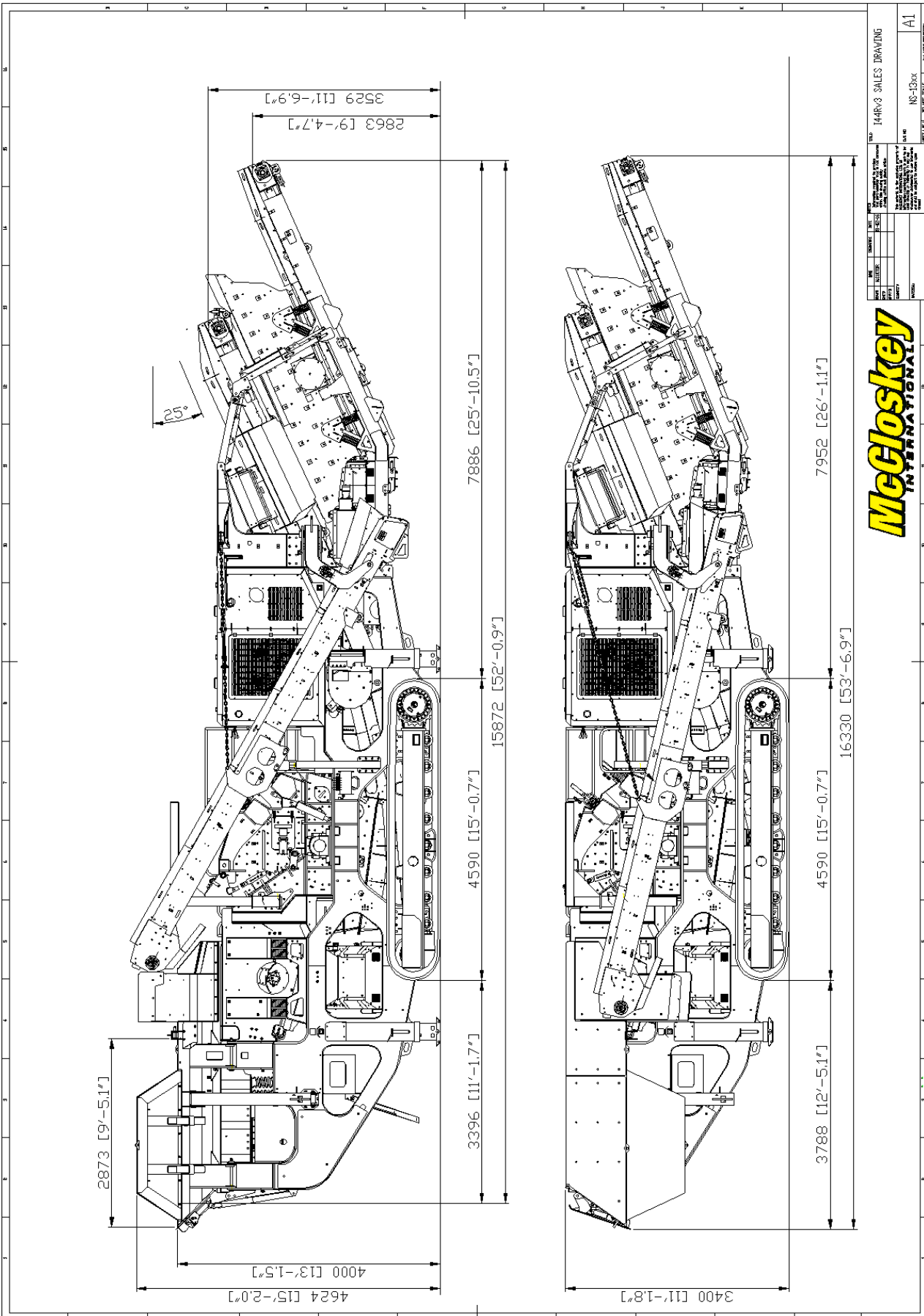
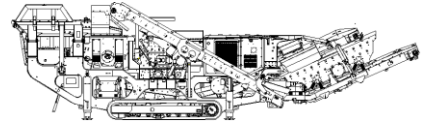
Width	400mm (15.7")
Length	3800mm (12' – 5.5") crs
Height	817mm (32")
Gearbox	Bonfiglioli 711 (or equivalent)
Ratio	144:1
Motor	Rexroth A2FE90
Speed max	1.50 Kph (0.93 Mph)
Flow rate	152 Lpm (40.2 US gpm) Three speed system selectable at control panel with smooth start / stop.
Multiple speeds	
Attachment to chassis	Bolt On for quick change

OPTIONS

Main conveyor variable speed control	
Hopper Extensions	
Overband magnet	
Water Pump and dust suppression system	
Various blow bar material options	
Work lights	
Belt Scale	
Refueling pump	STANDARD
Return conveyor	500mm or 650mm wide belt

SAFETY FEATURES

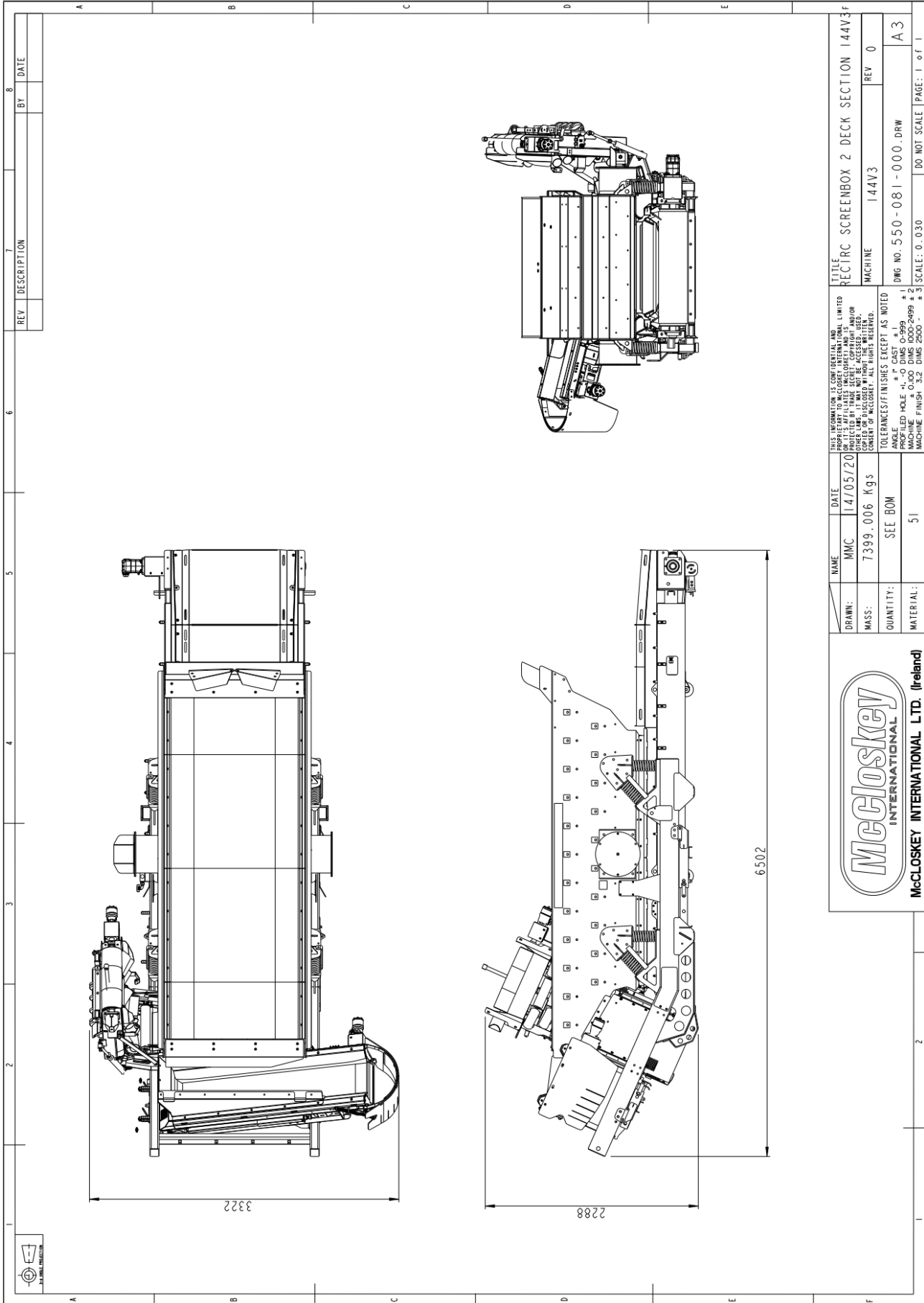
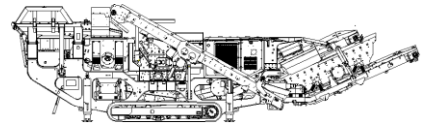
External belt alignment points
External grease points
Engine safety shutdown systems
Full safety guarding for nip points



REV	DATE	DESCRIPTION

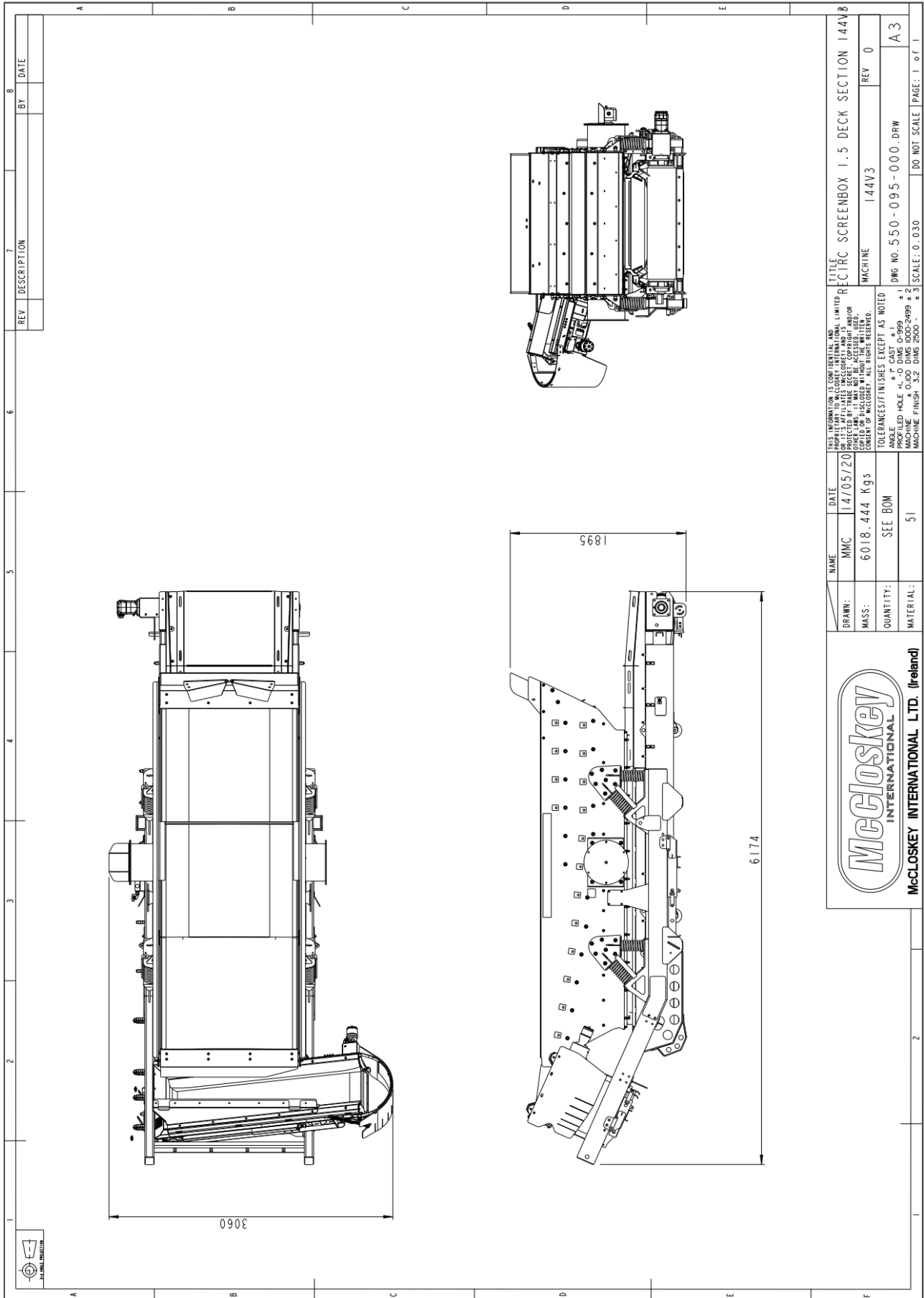
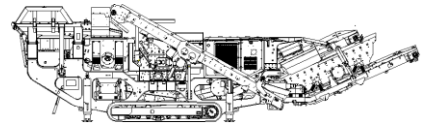
McCloskey
INTERNATIONAL

DATE	144Rv3 SALES DRAWING
SCALE	NS-13xx
BY	A1



REV		DESCRIPTION		7	BY	8	DATE
DRAWN:		NAME	DATE	THIS INFORMATION IS CONFIDENTIAL AND LIMITED TO THE USE OF THE BUYER. UNLESS OTHERWISE STATED, ALL RIGHTS ARE RESERVED BY MCCLOSKEY INTERNATIONAL AND ITS AFFILIATES. ANY REPRODUCTION, DISTRIBUTION, OR DISSEMINATION OF THIS DRAWING WITHOUT THE WRITTEN CONSENT OF MCCLOSKEY INTERNATIONAL IS STRICTLY PROHIBITED.			
MASS:		7399.006 Kgs	14/05/20	TOLERANCES/FINISHES EXCEPT AS NOTED			
QUANTITY:		SEE BOM		MACHINE FINISH - # 0.00 DIMS 0-999 # 1			
MATERIAL:		51		PROFILED HOLE - # 0.00 DIMS 0000-999 # 2			
				MACHINE FINISH - # 32 DIMS 2500 - # 3			
				SCALE: 0.030			
				DO NOT SCALE			
				PAGE: 1 of 1			
				REV 0			
				MACHINE I44V3			
				DWG NO. 550-081-000.DRW			
				A 3			
				TITLE RECTIRC SCREENBOX 2 DECK SECTION I44V3			





REV	DESCRIPTION	7	8

BY	DATE

<p>THIS INFORMATION IS CONFIDENTIAL AND PROPRIETARY TO MCCLOSKEY INTERNATIONAL LIMITED. IT IS TO BE KEPT SECRET AND NOT TO BE DISCLOSED, REPRODUCED, COPIED, OR IN ANY MANNER MADE AVAILABLE TO ANY OTHER PARTY WITHOUT THE WRITTEN CONSENT OF MCCLOSKEY. ALL RIGHTS RESERVED.</p>		<p>TITLE: RECTRC SCREENBOX 1.5 DECK SECTION 144V3 MACHINE: 144V3</p>
<p>NAME: MMC DATE: 14/05/20</p>	<p>MASS: 6018.444 Kg s</p>	<p>REV: 0</p>
<p>DRAWN: SEE BOM</p>	<p>QUANTITY: 51</p>	<p>DWG NO: 550-095-000.DRW SCALE: 0.030 DO NOT SCALE</p>
<p>MATERIAL: 51</p>	<p> </p>	<p>A3</p>



McCloskey INTERNATIONAL LTD. (Ireland)