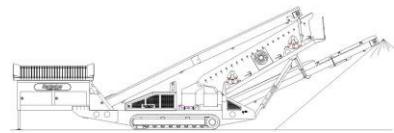


SPECIFICATIONS



McCloskey ***S190 3-Deck***



DESCRIPTION

Heavy duty mobile screener with following features:

- 20x5 heavy duty high energy 2 bearing 3 deck screenbox.
- 127Hp Cat engine.
- Track or wheel mobile.
- Integrated hydraulic folding stockpiling conveyors.
- 3 Deck auxiliary conveyor attaches to machine for one unit transport.
- Remote control tipping grid.
- Fast on site setup time – 15 minutes.

DIMENSIONS AND WEIGHTS

Length - transport 15ft hopper	18.45 (60' - 6")
Length - transport 12ft hopper	17.54m (57' - 6")
(Please see last page)	
Width – 500mm wide conveyor	3.06m (10')
Width – 650 wide conveyor	3.22m (10'7")
Height - transport track	3.45m (11' - 4")
Height - transport wheel	3.73m (12' - 3")
Weight - track	36,500 Kgs (80,468 lbs)
Weight - wheel	33,000 Kgs (72,752 lbs)

CAPACITIES

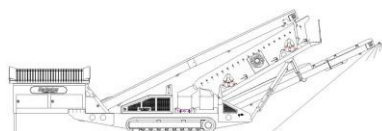
Diesel tank capacity	399 L (105 gal)
Hydraulic tank capacity	630 L (166 Gals)
Capacity - 12ft hopper	8.01 m ³ (10.48 yd ³)
Capacity - 15ft hopper	10.01 m ³ (13.09 yd ³)

FEED CONVEYOR

Belt width	1200mm (48")
Belt spec	Plain 500/3 6+3
Drive drum dia.	335mm (13.1")
Tail drum dia.	320mm (12.5")
Gearbox	Bonfig 805 W2
Motor	160cc motor
Flow rate	72.6 Lpm (19.2 US gpm)
Adjustable speed	YES
Maximum speed	18.75 rpm

MAIN CONVEYOR

Belt width	1050mm (42")
Belt spec	Chevron 400/3 6+1.5
Option	Plain belt
Drive drum dia.	285mm (11.2")
Tail drum dia.	270mm (10.6")
Motor	630 cc motor
Flow rate	101.2 Lpm (26.7 US gpm)
Adjustable speed	OPTION
Maximum speed	160 rpm

**TAIL CONVEYOR**

Stockpile height - track model	4638mm (15' - 3")
Stockpile height - wheel model	4905mm (16' - 1")
Belt width	1200mm (48")
Belt spec	Plain - 400/2 6+1.5
Drive drum dia.	285mm (11.2")
Tail drum dia.	270mm (10.6")
Motor	800 cc motor
Flow rate	101.2 Lpm (26.7 US gpm)
Maximum speed	126.5 rpm

SIDE CONVEYOR

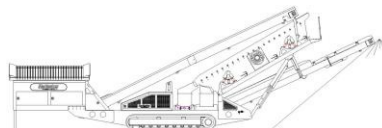
Stockpile height - track model	5100mm (16' - 9")
Stockpile height - wheel model	5370mm (17' - 7")
Belt width	800mm (32")
Belt spec	Chevron - 400/3 6+1.5
Drive drum dia.	285mm (11.2")
Tail drum dia.	270mm (10.6")
Motor	400 cc motor
Flow rate	50.6 Lpm (13.4 US gpm)
Adjustable speed	YES
Maximum speed	126.5 rpm
Drum centers	10275mm (33' - 8")

3 DECK TRANSFER CONVEYOR

Belt width	650mm (26")
Belt spec	Plain 400/3 4+2
Drive drum dia.	200mm (8")
Tail drum dia.	200mm (8")
Motor	400 cc motor
Flow rate	50.6 Lpm (13.4 US gpm)
Adjustable speed	YES
Maximum speed	126.5 rpm

3 DECK AUXILLARY CONVEYOR

Stockpile height - track model	4700mm (15.5')
Belt width	650mm (26")
Option	500mm (20")
Belt spec	Chevron - 400/3 6+1.5
Drive drum dia.	293mm (11.5")
Tail drum dia. (spoked)	270mm (10.6")
Motor	400 cc motor
Flow rate	50.6 Lpm (13.4 US gpm)
Adjustable speed	YES
Maximum speed	126.5 rpm

**SCREENBOX**

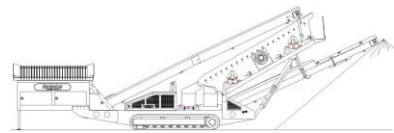
Dimensions - top deck	6100mm x 1524mm (20' x 5')
Dimensions - middle deck	6100mm x 1524mm (20' x 5')
Dimensions - bottom deck	5490mm x 1524mm (18' x 5')
Bearing type 3 Deck	NSK 130mm bore
Screens - top deck	5' x 4' side tension - 5 off
Screens - middle deck	5' x 4' side tension - 5 off
Screens - bottom deck	5' x 6' end tension - 3 off
Tensioning - top deck	Quick release pin and wedge
Tensioning - middle deck	Quick release pin and wedge
Tensioning - bottom deck	Curved tension bar and adjuster
Screen angle	20 to 30 deg
Screen motor	85.7cc/rev
Drive system	Direct drive with HRC180 coupling
Hydraulic flowrate	101.2 Lpm (26.7 US gpm)
Speed adjustable	YES - Pressure compensated FCV
Screen stroke adjustable	6 - 10mm maximum
Screen shaft speed	1130 - 950 rpm
Screen 'g' force	4.29 - 5.05 g

POWERUNIT AND HYDRAULICS

Engine	CAT C4.4
Engine power	127 HP
Engine speed	2200 rpm
Flywheel Pump 1	DBH 5046,5046,5033
LH PTO Pump 2	DBH 5023,5023,19.5
Total system flow	419 L (110.7 US Gpm)
Hydraulic tank capacity	630 L (166 US Gals)
Hydraulic tank ratio	1.51 : 1
Hydraulic Oil cooler	YES

ELECTRIC HYDRAULIC POWERUNIT/ DUAL POWER

2 Electric motors	37KW (50 Hp)
Frequency	50hz or 60hz
Voltage	3 phase 415V or customer specific
Control panel can be supplied upon request	

**ELECTRICS**

Emergency stops	6 off, 1 feeder, 2 powerunit RH&LH, 2 chassis front RH&LH, 1 Walkway
Chassis cabling	Armored cable
Start Siren	YES - 10 sec delay
Engine shutdowns:	Low oil pressure High water temp Air filter blockage (selectable) Fuel contamination Low hydraulic tank level
Engine room light	YES
Remote tipping grid	YES - 2 function timed
Radio control tracks	optional - Hetronic system
Pendant track control	YES - plugged in at feeder end

TRACKS

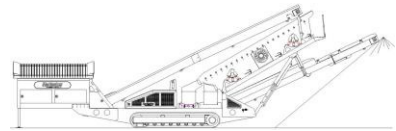
Width	500mm (19.7")
Length	3800mm (12' - 6") crs
Height	798mm (31.4")
Gearbox	Bonfiglioli 709
Ratio	148:1
Motor	Rexroth 90
Speed max	1.14 Kph (0.71 Mph)
Flow rate	101.2 Lpm (26.7 US gpm)
Attachment to chassis	Bolt On for quick change

WHEELS

Width	2900mm (9' - 6")
Axle centers	1360mm (4' - 6")
Wheels	235/75/R17.5 dual
Axles	3 off
Brakes	YES
Spring suspension	YES
Mudguards	YES
Handbrake	OPTION
ABS	OPTION

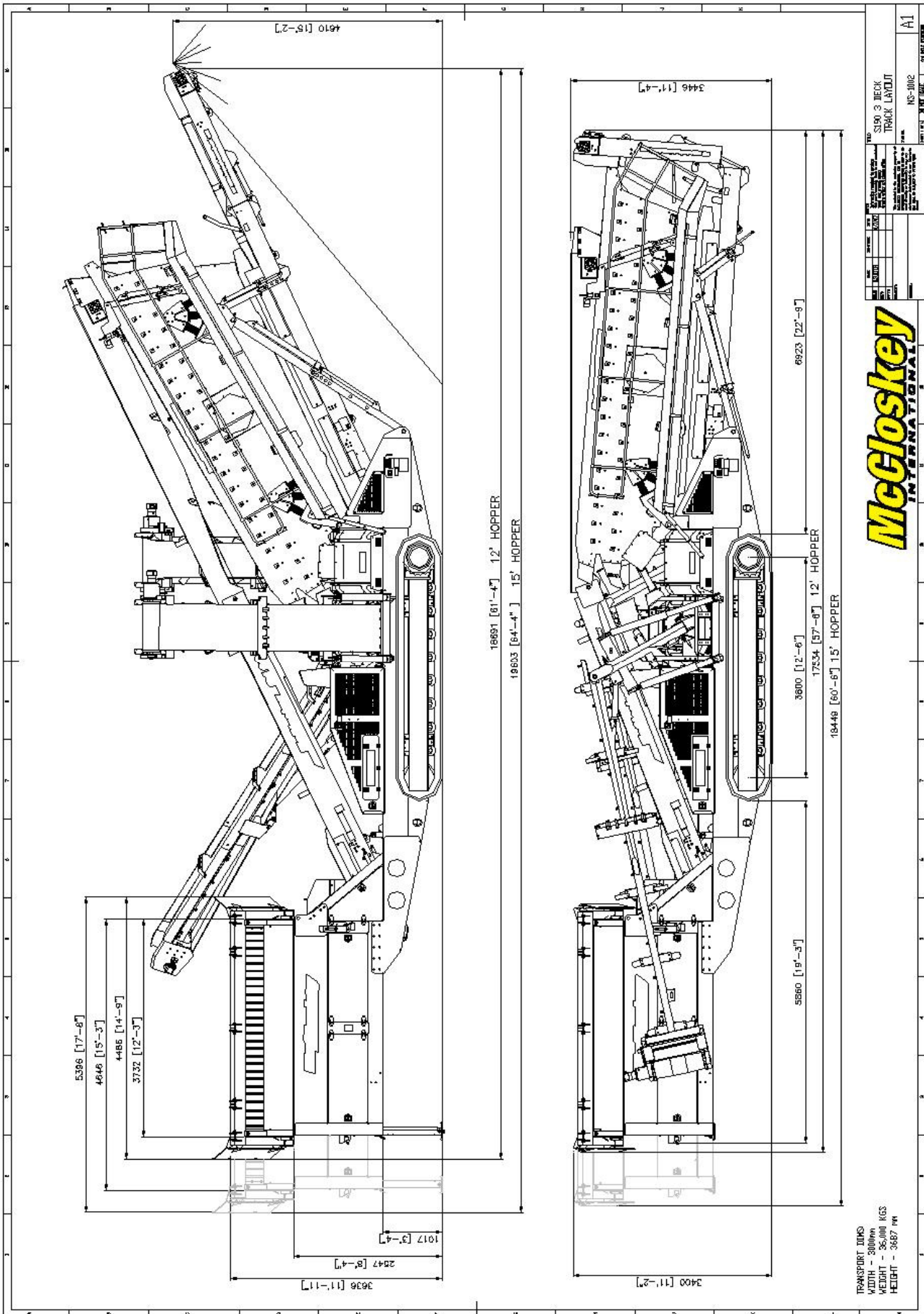
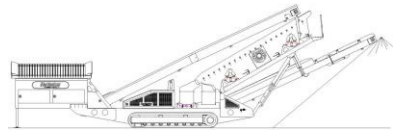
OPTIONS

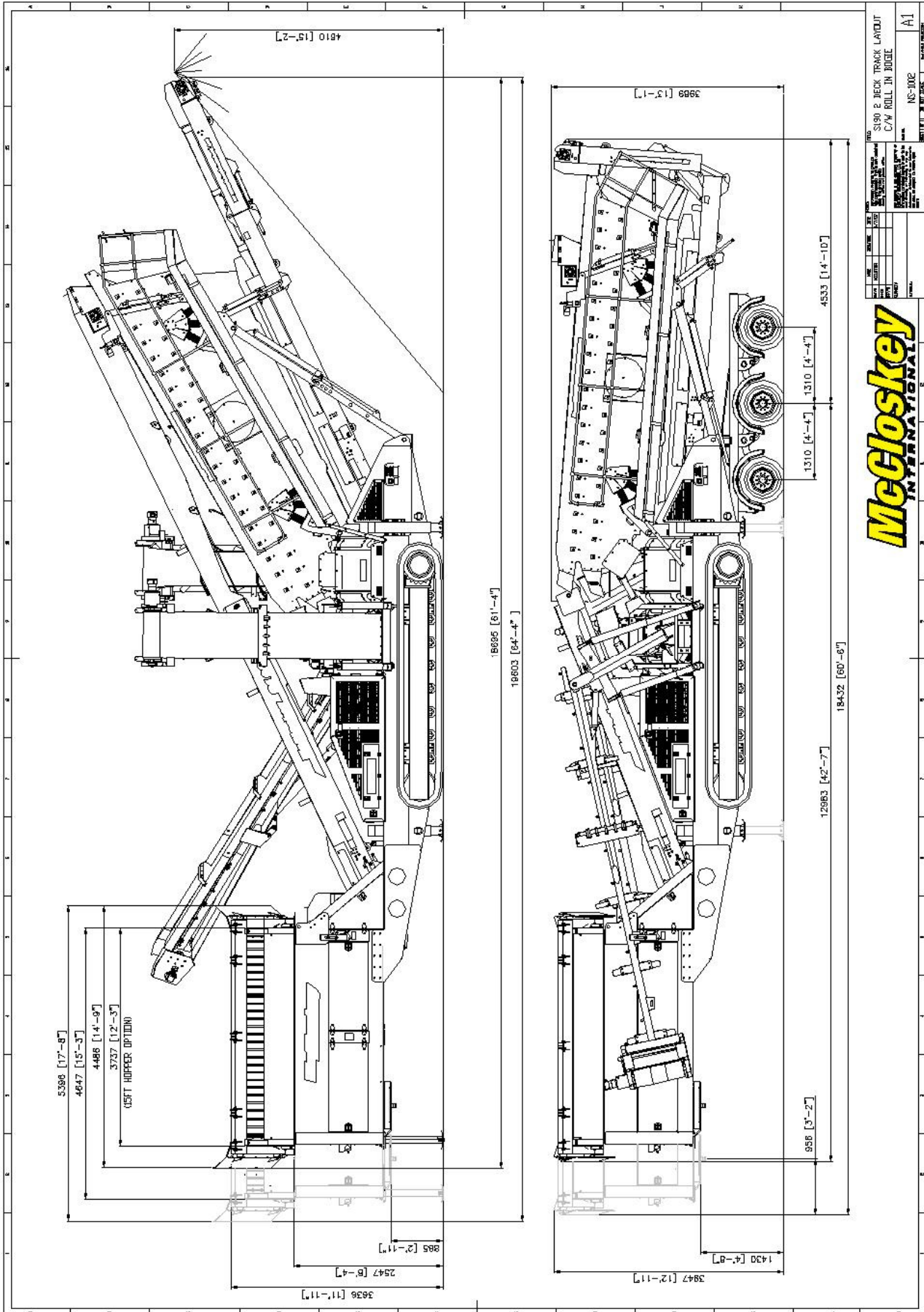
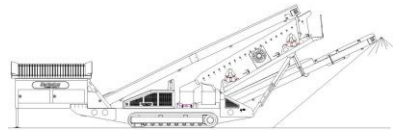
Single or double deck live head
Single shaft Shredder
Roll-in bogie system
15ft Hopper
Crusher chute (available with 15ft hopper only)
Radio remote control
Auxiliary hydraulic circuit
Dual diesel/electric power

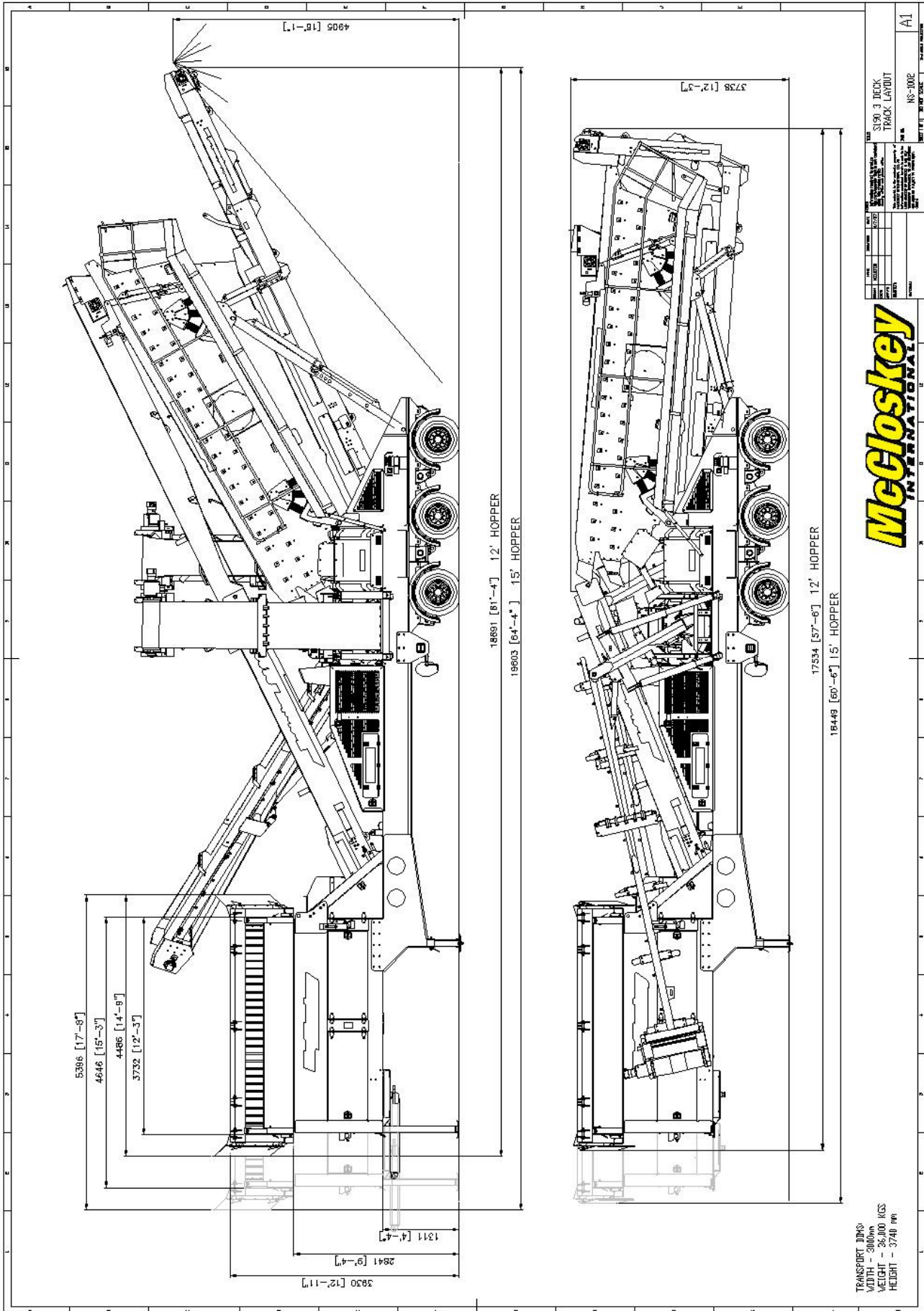
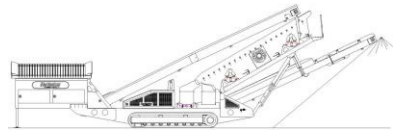


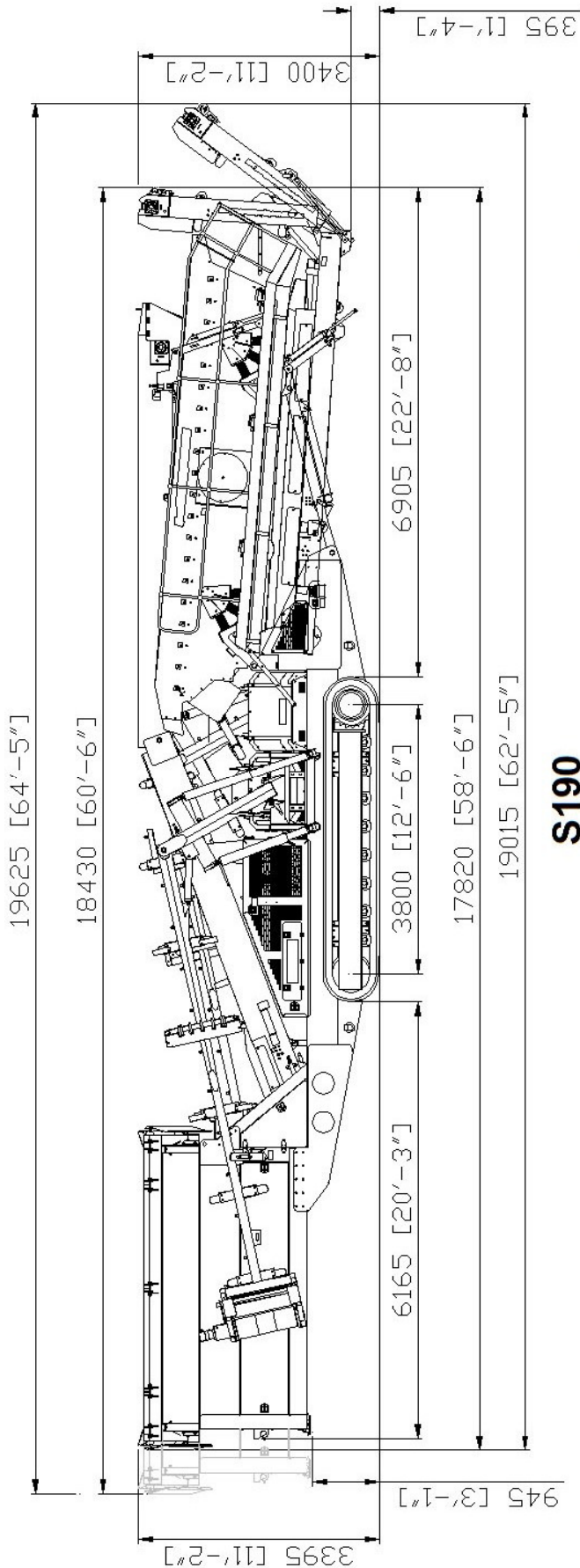
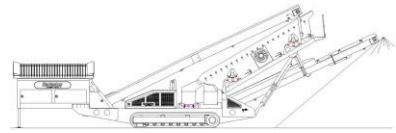
SAFETY FEATURES

- External belt alignment points
- External grease points
- Engine safety shutdown systems
- Full safety guarding for nip points

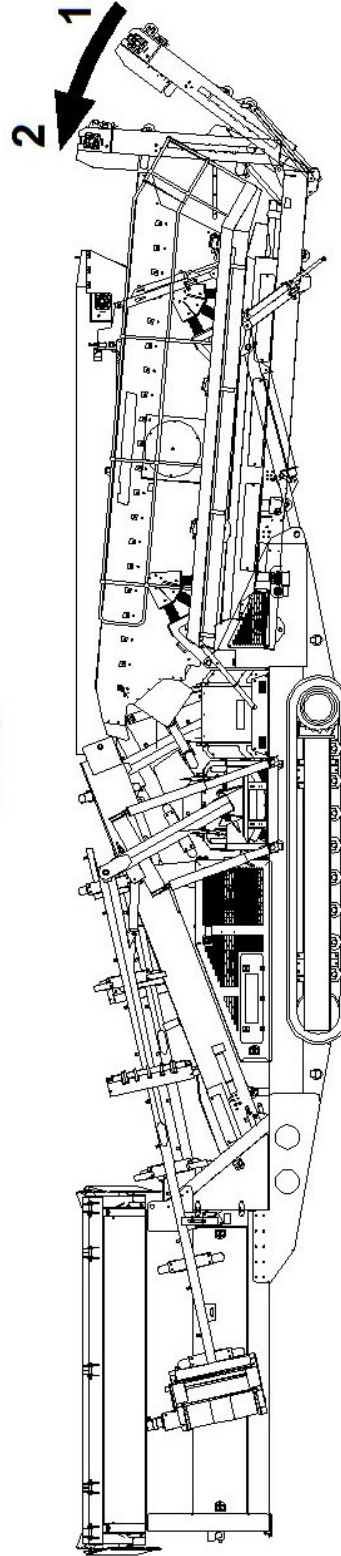








S190



POSITION 1 PREVENTS DAMAGE WHEN RAISING THE SCREENBOX

POSITION 2 IS THE MINIMUM LENGTH MACHINE CAN BE FOLDED TO