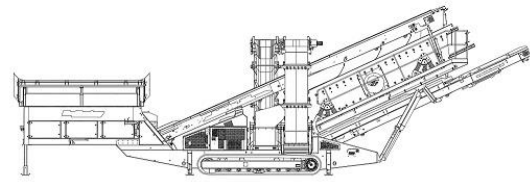


SPECIFICATIONS



McCloskey ***S250 2 DECK***

**DESCRIPTION**

Heavy duty tracked mounted mobile screener with following features:

- 22x6 heavy duty high energy 2 bearing 2 deck screenbox.
- 225Hp CAT engine Tier 3 or 4f, 218Hp Volvo Tier 4 engine.
- Track mobile.
- Integrated hydraulic folding stockpiling conveyors.
- Remote control tipping grid
- Fast on-site setup time – 15 minutes typically.

DIMENSIONS AND WEIGHTS

Length – transport 15ft hopper	19,55m (64' – 1.5")
Length – transport 12ft hopper	18,63m (61' – 1.5")
Width – transport (800mm aux conveyor)	3.3m (10'10")
Height - transport	3.6m (11' – 10")
Weight –	38000 Kgs (83776lbs) (est)

CAPACITIES

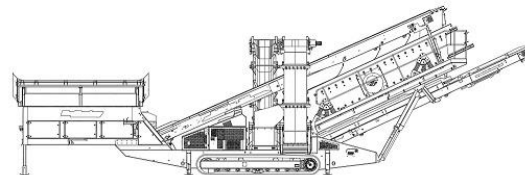
Diesel tank capacity	485L (128 US gal)
Hydraulic tank capacity	800 L (211 US gal)
Capacity – 12ft hopper	8m ³ (10.5yd ³)
Capacity – 15ft hopper	10m ³ (13.1yd ³)

FEED CONVEYOR

Belt width	1200mm (48")
Belt spec	Plain 500/3 6+3
Drive drum dia.	335mm (13.1")
Tail drum dia.	320mm (12.5")
Gearbox	Bonfiglioli 805 W2
Motor	Danfoss OMSS 160
Flow rate	79.5 Lpm (21 US gpm)
Adjustable speed	YES
Maximum speed	18.9 rpm

MAIN CONVEYOR

Belt width	1200mm (48")
Belt spec	Chevron 400/3 6+1.5
Option	Plain belt
Drive drum dia.	285mm (11.2")
Tail drum dia.	270mm (10.6")
Motor	Danfoss OMV630
Flow rate	100.5Lpm (26.5 US gpm)
Adjustable speed	OPTION
Maximum speed	163rpm

**TAIL CONVEYOR**

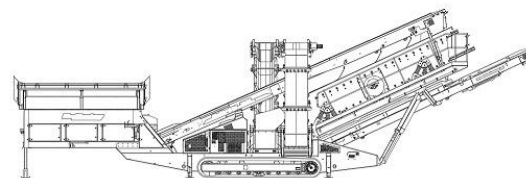
Stockpile height	4992mm (16' – 4.5")
Belt width	1200mm (48")
Belt spec	Plain - 400/2 6+1.5
Drive drum dia.	285.5mm (11.2")
Tail drum dia.	270mm (10.6")
Motor	Danfoss OMV630
Flow rate	79.5 Lpm (21 US gpm)
Adjustable speed	YES
Maximum speed	108 rpm

SIDE CONVEYORS

Stockpile height	5398mm (17' – 8.5")
Belt width	900mm (36")
Belt spec	Chevron – 400/3 6+1.5
Drive drum dia.	285.5mm (11.2")
Tail drum dia.	270mm (10.6")
Motor	OMT500
Flow rate	Up to 64.8 Lpm (17.1 US gpm)
Maximum speed	Up to 136 rpm
Angle adjustable	YES

**SCREENBOX 2 OPTIONS CAN BE SIDE TENSIONED OR END TENSION
BOTTOM DECK**

Dimensions – top deck	6710mm x 1830mm (22' x 6')
Dimensions – bottom deck	6100mm x 1830mm (20' x 6')
Bearing type 2 deck	NSK/Timken 150mm bore
Screens – top deck	6' x 4' side tension 5 off, 6' x 2' side tension 1 off
Side tension bottom deck	6' x 4' side tension 5 off
End tension bottom deck	6' x 6'8" end tension 3 off
Tensioning - top deck	Quick release pin and wedge
Tensioning - bottom deck end tension	Curved tension bar and adjuster
Screen angle	18 to 25 degrees
Screen motor	Hydreco MCC2208 58.9cc twin drive
Drive system	Direct drive with HRC230 couplings
Flow rate	142.6Lpm (37.6 US gpm)
Speed adjustable	YES – pressure compensated FCV
Screen stroke adjustable	6 – 10mm maximum
Screen shaft speed	1130 – 950rpm
Screen 'g' force	4.3 – 5.05g

**COUPLING CIRCUIT**

Flow	100.5Lpm (26.5 US gpm)
Pressure	220 Bar (3200 psi)

POWERUNIT AND HYDRAULICS

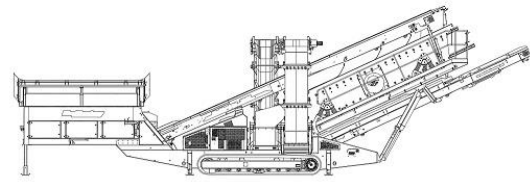
Engine Tier 3	CAT C7.1 225Hp
Engine Tier 4F	CAT C7.1 225Hp, Volvo D5 218Hp
Engine speed	1800 rpm
Flywheel Pump 1	Turolla 61/34/17 @ 2338rpm
Flywheel Pump 2	Turolla 43/43/34 @ 2338rpm
Flywheel splitter gearbox	Twin Disc AM220 1 : 0.77 ratio
PTO Pump 3	Turolla 36/36 @ 1800rpm
Total system flow (max)	672 Lpm (117.5 US Gpm)
Hydraulic tank capacity	800 L (211 US Gals)
Hydraulic tank ratio	1.2 : 1
Hydraulic Oil cooler	YES

ELECTRICS

Emergency stops	6 off, 1 feeder, 2 powerunit, 2 chassis, 1 walkway
Start Siren	YES – 10 sec delay
Control panel	Tedd Engineering / IFM
Engine shutdowns:	Low oil pressure High water temp Air filter blockage (selectable) Fuel contamination Low hydraulic tank level High hydraulic oil temperature
Engine room light	YES
Remote tipping grid	YES – 2 functions timed
Radio control tracks and feeder	STANDARD
Pendant track control	YES – plugged in at feeder end

TRACKS

Width	400mm (15.7")
Length	3800mm (12' – 5.5") crs
Height	817mm (32")
Gearbox	Bonfiglioli 711 (or equivalent)
Ratio	144:1
Motor	Rexroth A2FE90
Speed max	1.50 Kph (0.93 Mph)
Flow rate	152 Lpm (40.2 US gpm)
Multiple speeds	Three speed system selectable at control panel with smooth start / stop.
Attachment to chassis	Bolt On for quick change

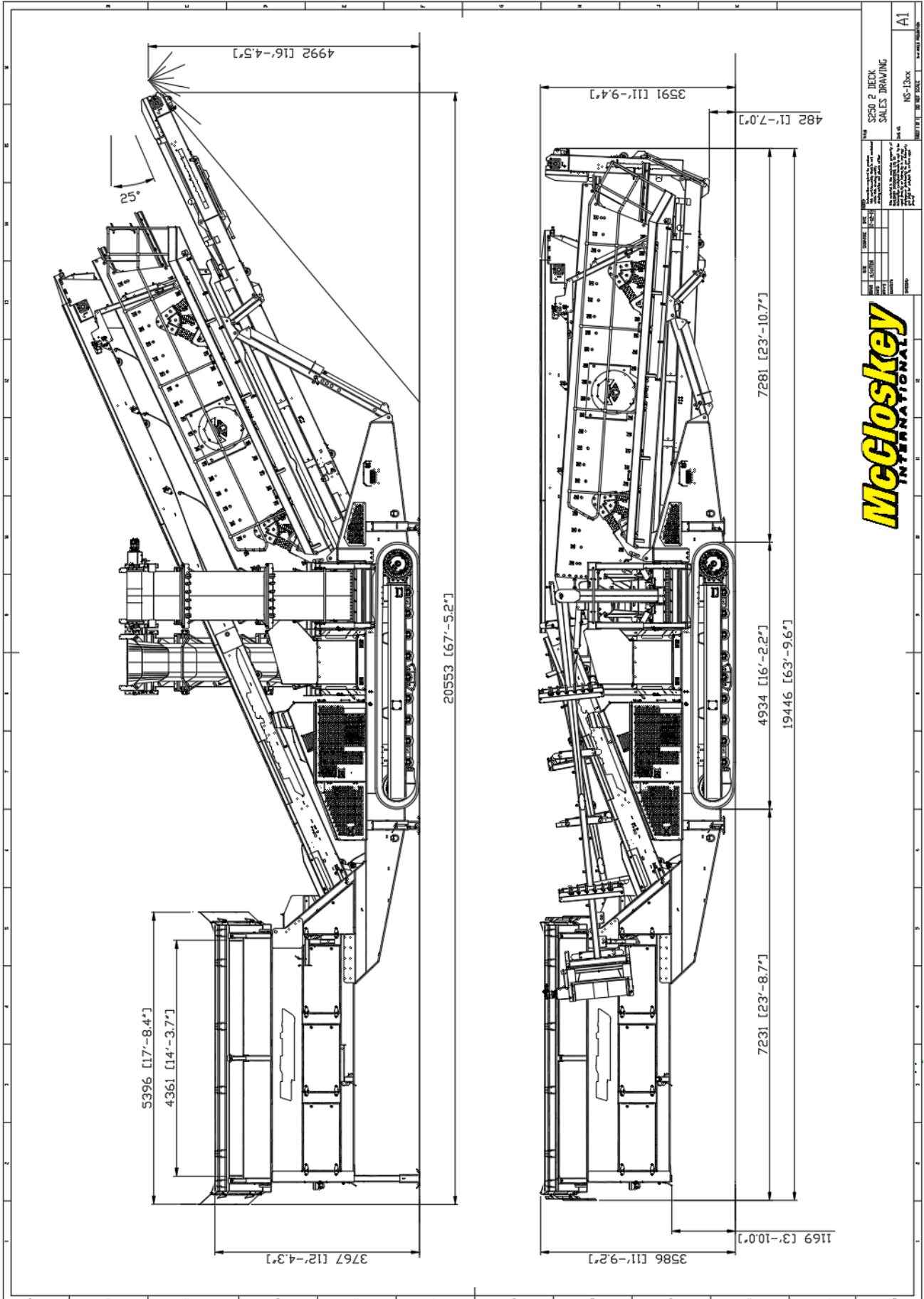
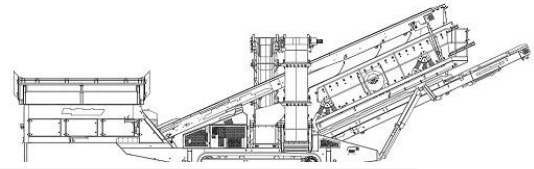


OPTIONS

- Single or double deck live head
- Single shaft shredder
- 12' or 15' Hopper
- Crusher feed in chute (only in conjunction with 15ft hopper)

SAFETY FEATURES

- External belt alignment points
- External grease points
- Engine safety shutdown systems
- Full safety guarding for nip points



NO.	REV.	DATE	BY	CHKD.	APP'D.

McCloskey
INTERNATIONAL

S250 2 DECK
SALES DRAWING
REV. 00
NS-130xx
A1