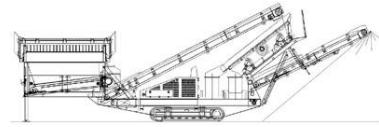


SPECIFICATIONS



McCloskey ***S80***

**DESCRIPTION**

Heavy duty mobile screener with following features:

- 10x4.5 heavy duty high energy 2 bearing screenbox.
- 74.5Kw (100Hp) Cat 4.4 diesel engine.
- Optional 63Kw (84Hp) JCB 444 diesel engine.
- Track or wheel mobile.
- Integrated hydraulic folding stockpiling conveyors.
- Remote control tipping grid.
- Fast on site setup time – 10 minutes.

DIMENSIONS AND WEIGHTS

Length – transport(Track)	13.21m (44' – 3")
Length – transport (Wheel)	13.34m (43' -9")
Width – transport	2.50m (8' – 4")
Height – transport 2 deck track	3.20m (10' – 6")
Height – transport 2 deck wheel	3.69m (12' – 1")
Weight - 2 deck track	19,250 Kgs (42,439 lbs)
Weight - 2 deck wheel	18,200 Kgs (40,124lbs)

CAPACITIES

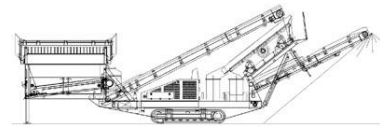
Diesel tank capacity	342 L (75 Gal, 90 US gal)
Hydraulic tank capacity	516 L (114 Gal, 136 US gal)
Hopper capacity	6.00 m ³ (7.85 yd ³) estimated

FEED CONVEYOR

Belt width	900mm (36")
Belt spec	Plain 500/3 5+1.5
Drive drum dia.	285mm (11.2")
Tail drum dia.	270mm (10.6")
Gearbox	Bonfig 805 W2
Gearbox ratio	24.2
Gearbox torque	7000Nm cont, 12500Nm max
Motor	Danfoss OMSS160 / Eaton
Flow rate	64.2 Lpm (17.0 US gpm)
Adjustable speed	YES
Maximum speed	16.7 rpm

MAIN CONVEYOR

Belt width	900mm (36")
Belt spec	Chervon 400/2 4+2
Drive drum dia.	285mm (11.2")
Tail drum dia.	270mm (10.6")
Motor	Danfoss OMT500 / Eaton
Flow rate	72.6 Lpm (19.2 US gpm)
Adjustable speed	OPTION
Maximum speed	145 rpm

**TAIL CONVEYOR**

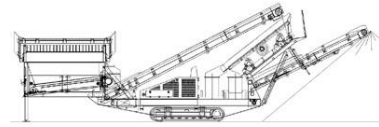
Stockpile height - track model	3790mm (12' – 5")
Stockpile height - wheel model	4100mm (13' – 6")
Belt width	1050mm (42")
Belt spec	Plain – 400/2 4+2
Drive drum dia.	235mm (9.3")
Tail drum dia.	220mm (8.7")
Motor	Danfoss OMH500 / Eaton
Flow rate	72.6 Lpm (19.2 US gpm)
Maximum speed	145 rpm

SIDE CONVEYOR

Stockpile height - track model	4110mm (13' – 6")
Stockpile height - wheel model	4420mm (14' - 6")
Belt width	650mm (26")
Belt spec	Chevron - 400/2 5+1.5 C15
Drive drum dia.	235mm (9.3")
Tail drum dia.	220mm (8.7")
Motor	Danfoss OMH400 / Eaton
Flow rate	64.2 Lpm (17.0 US gpm)
Adjustable speed	YES
Maximum speed	160.5 rpm?

SCREENBOX

Dimensions - top deck	3050mm x 1370mm (10' x 4.5')
Dimensions - bottom deck	2440mm x 1370mm (8' x 4.5')
Bearing type 2 Deck	NSK/RHP 22219
Screens - top deck	4.5' x 4' side tension - 2 off & 4.5' x 2' side tension - 1 off
Screens - bottom deck	8' x 4.5' end tension – 1 off
Tensioning - top deck	Quick release pin and wedge
Tensioning - bottom deck	Curved tension bar and adjuster
Screen angle	27 to 37 deg
Screen motor	DBH MCC2208 (59cc/rev)
Drive system	Direct drive with HRC150 coupling
Hydraulic flowrate	72.6 Lpm (19.2 US gpm)
Speed adjustable	YES - Pressure compensated FCV
Screen stroke adjustable	6 - 10mm maximum
Screen shaft speed	1130 - 950 rpm
Screen 'g' force	4.29 - 5.05

**POWERUNIT AND HYDRAULICS**

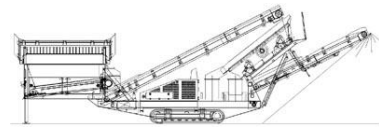
Engine	JCB 444 IPU T3 TC-63
Engine power	63kW (84Hp)
Engine speed	2200 rpm
Flywheel Pump 1	DBH 5033,5033
LH PTO Pump 2 (1.268 ratio)	DBH 5023,5023
RH PTO Pump 3 (1.268 ratio)	DBH 2SPA11
Total system flow	304 L (80.3 US Gpm)
Hydraulic tank capacity	516 L (114 Gal,136 US gal)
Hydraulic tank ratio	1.70 : 1
Hydraulic Oil cooler	YES

ELECTRICS

Emergency stops	5 off, 1 hopper, 2 powerunit RH&LH, 2 chassis front RH&LH
Chassis cabling	Armored cable
Start Siren	YES - 10 sec delay
Engine shutdowns:	Low oil pressure High water temp Air filter blockage (selectable) Fuel contamination Low hydraulic tank level
Engine room light	YES
Remote tipping grid	YES - 2 function timed
Radio control tracks	optional - Hetric system
Pendant track control	YES - plugged in at feeder end

TRACKS

Width	400mm (15.7")
Length	2500mm (8' - 2") crs.
Height	739mm (2' - 5")
Gearbox	Bonfiglioli 707
Ratio	122:1
Motor	Rexroth 63
Speed max	1.15 Kph (0.82 Mph)
Flow rate	72.6 Lpm (19.2 US gpm)
Attachment to chassis	Bolt On for quick change

**WHEELS**

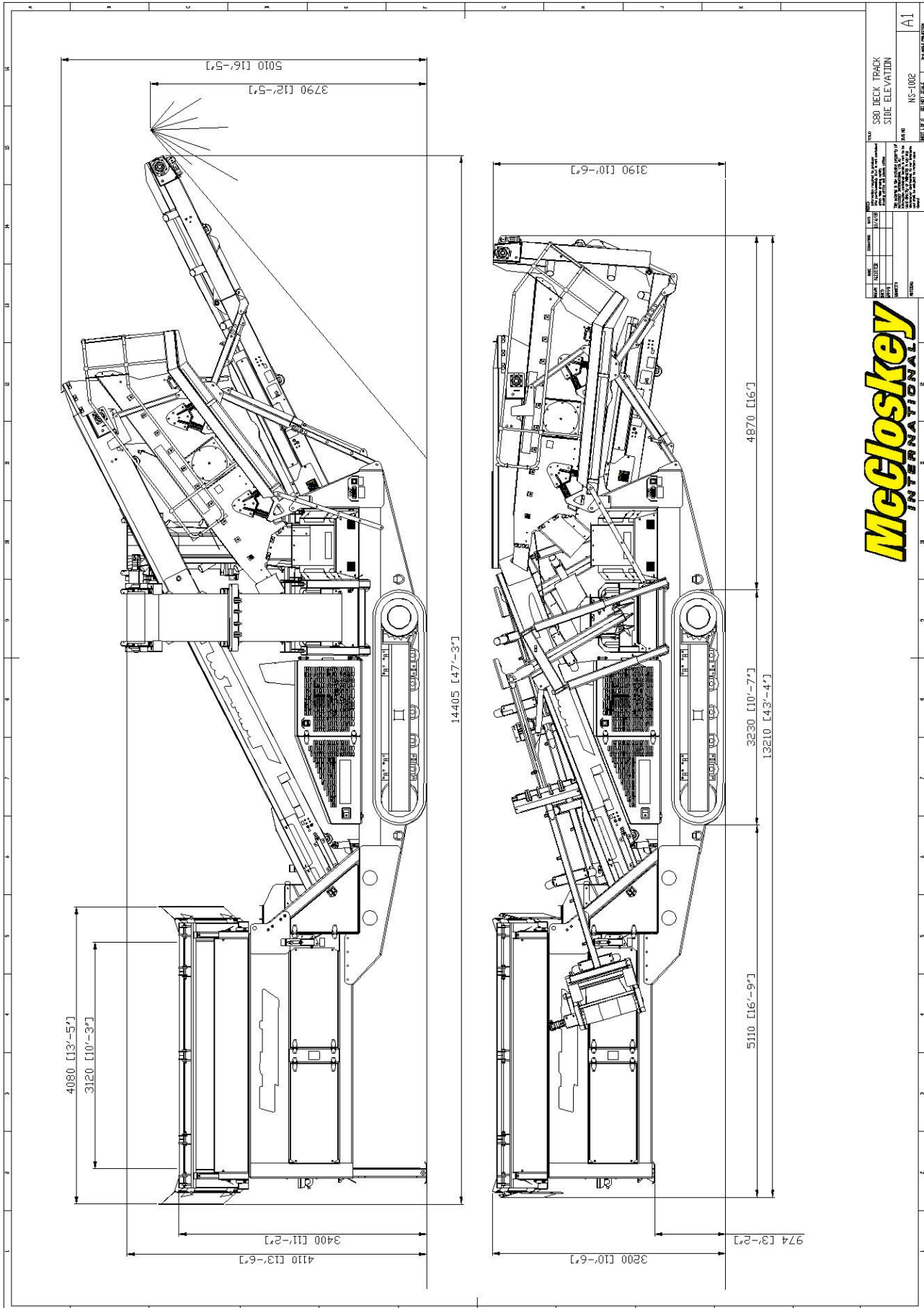
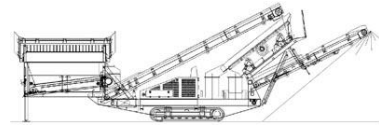
Width	2500mm (8' – 2.4")
Axle centers	1200mm (3' – 11.2")
Wheels	235/75/R17.5 dual
Axles	2 off
Brakes	YES
Spring suspension	YES
Mudguards	YES
Handbrake	OPTION
ABS	OPTION

OPTIONS

2 Deck Rinser
2 Deck live Head
Radio remote control
Twin axle dual wheel bogie
Single shaft shredder

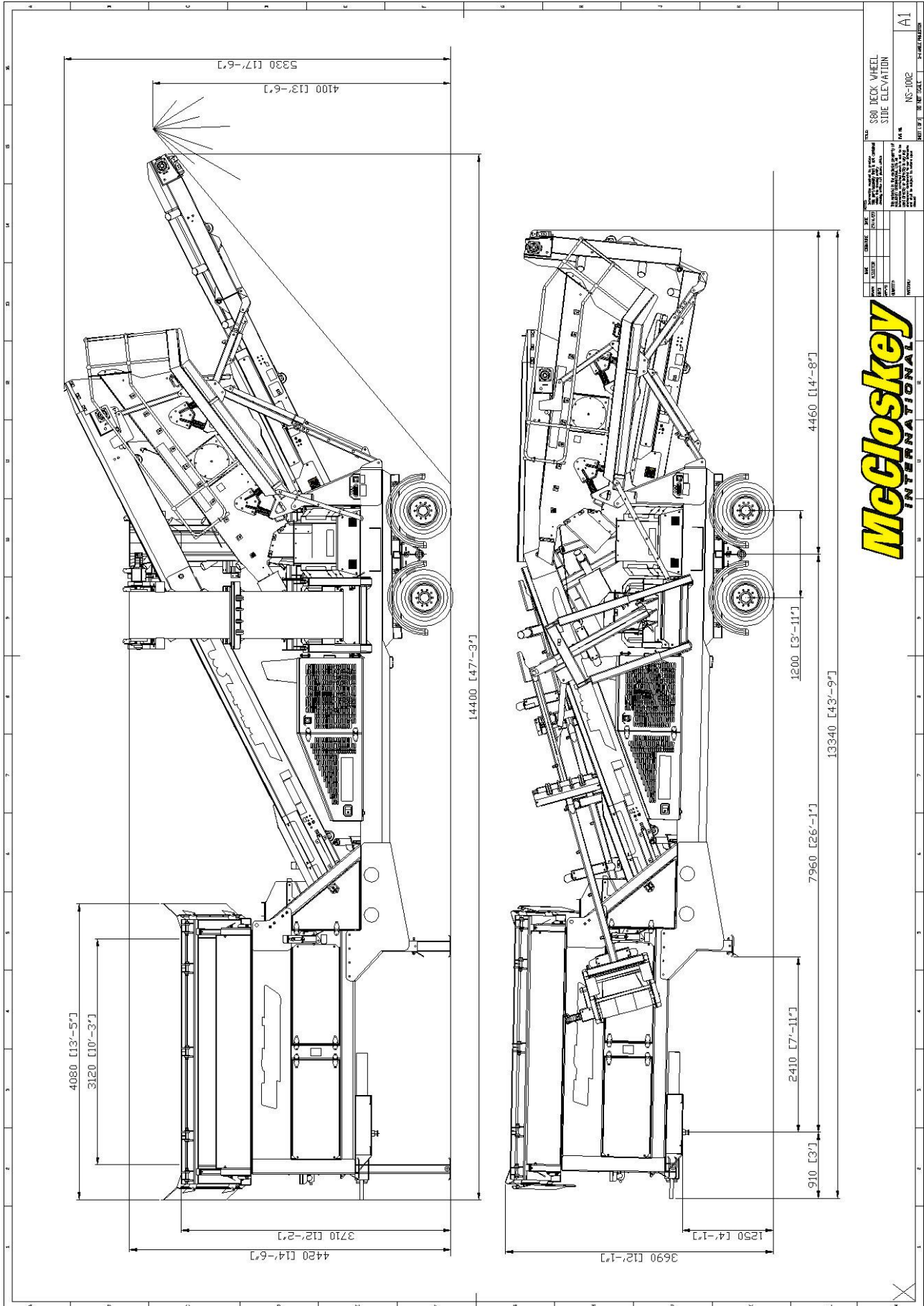
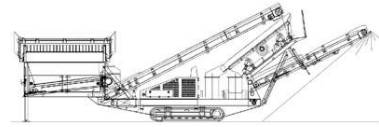
SAFETY FEATURES

External belt alignment points
External grease points
Engine safety shutdown systems
Full safety guarding for nip points



REV		NO.		DATE		BY		CHKD		APP'D	
TITLE: S80 DECK TRACK SIDE ELEVATION PART NO: NS-1002 DRAWING NO: A1											





McCloskey
INTERNATIONAL

TITLE: S80 DECK WHEEL SIDE ELEVATION		DATE: 08/15/15	SCALE: AS SHOWN	REV: A1
DESIGNED BY: [REDACTED]	CHECKED BY: [REDACTED]	APPROVED BY: [REDACTED]	DATE: 08/15/15	SCALE: AS SHOWN
PART NO: NS-1002		REV: A1		