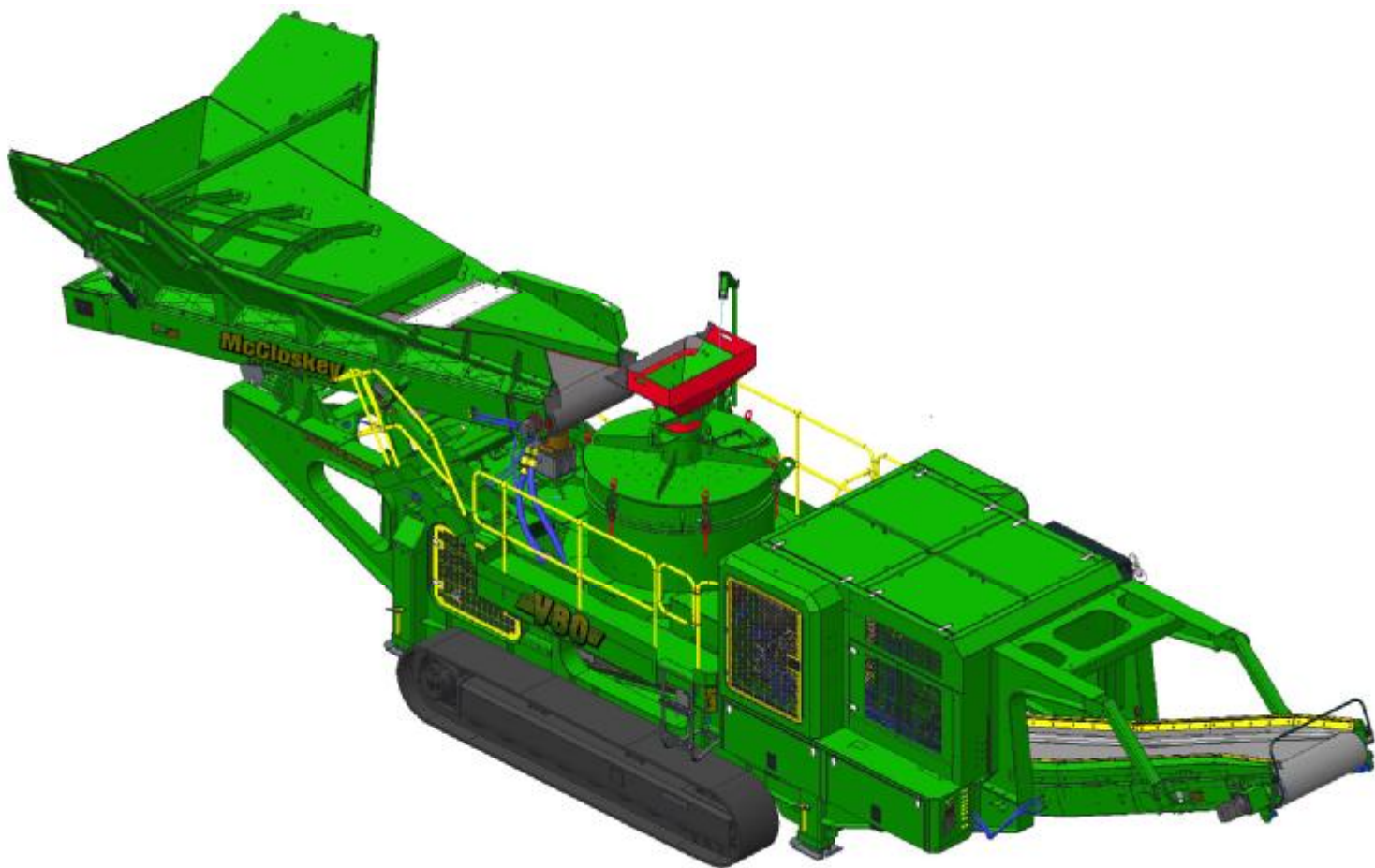




# ***SPECIFICATIONS***



# ***McCloskey*** ***V80***

**DESCRIPTION**

Heavy duty track mounted Crusher with following features:

- Cemco Turbo T-80 VSI crusher.
- 440Hp C13 Cat engine.
- Track or Track c/w Wheel bogie.
- Integrated hopper with folding rear door.
- I-beam plate fabricated chassis construction.
- Large access between crusher discharge and main conveyor feedboot
- Open chassis design for ease of maintenance
- Fast setup time

**DIMENSIONS AND WEIGHTS**

Length - transport all models	15.98m (52' - 4.9")
Width - transport all models	2.9m (9' - 6")
Height - transport track	3.4m (11' - 2")
Weight - track	39,000 Kgs (85,980 lbs) estimated

**CAPACITIES**

Diesel tank capacity	800 L (211 US gal)
Hydraulic tank capacity	1800 L (475 US Gals)

**CRUSHING CHAMBER**

Crusher speed	800 - 1800 rpm
Crusher Drive	Hydraulic - V-belt drive
Feed size Rotor	100mm (4")
Feed size Superchipper™	50mm (2") - 63.5mm (2.5")
Superchipper™ diameter	890mm (35")
Shoe table diameter	890mm (35")
VSI weight	11,430kg (25,200 lbs)
Motor	Kawasaki axial piston 530cc/rev
Flow rate	608 Lpm (160 US gpm)
Level sensor	Ultrasonic
Max feed tonnage	100 - 275 TPH
Hydraulic raise/lower lid for maintenance	



**POSSIBLE INTERNAL CONFIGURATION OPTIONS**

**Shoe Table / Rockshelf**



- Friable, low abrasion material
- Low reduction rate / High recirculating load
- Low percentage of "fracture face" material

**Superchipper™ / Rockshelf**



- Good for shaping abrasive material
- Good for light crushing

**Shoe Table / Anvil Ring**



- Medium range friable material
- Medium to low abrasion material
- Low to Medium recirculating load
- Good reduction rate / Good for "chips" and sand

**Superchipper™ / Anvil Ring**



- Low recirculating load
- High reduction rate / High "fractured face" ratio
- Use with high abrasion, low friability material
- Excellent for producing sands and fines



<i>Shoe Table Data</i>				<i>Superchipper™ Rotor Data</i>			
Diameter	Shoes	Feed Size	Capacity	Diameter	Ports	Feed Size	Capacity
890mm (35")	3,4,5,6	100mm (4")	100-400	890mm (35")	4,5	63mm (2.5")	100-400

Based on cubical feed

**FEEDER**

Feeder opening width	800mm (31.5")
Feeder drum crs.	6000mm (19' 8.2")
Drive	Hydraulic
Feeder belt width	1050mm (42")
Motor	Danfoss OMSS 125
Gearbox	Bonfig 809 W2 23.6:1
Flow rate	87.4 Lpm (23.1 US gpm)
Adjustable speed	Yes
Maximum speed	29 rpm

**HOPPER**

Length	3780mm (12' - 4.9")
Width	2200mm (7' - 2")
Volume	5m <sup>3</sup> (6.5yd <sup>3</sup> )
Material	6mm sides + 10mm Hardox liners
Hopper bridge	YES

**MAIN CONVEYOR**

Stockpile height	3250mm (10' - 8")
Belt width	1050mm (42")
Belt spec	Plain 500/3 8+2
Drive drum dia.	350mm (13.7")
Tail drum dia.	270mm (10.6")
Motor	OMV630
Flow rate	68.4 Lpm (18.1 US gpm)
Maximum speed	108.5 rpm
Angle adjustable	NO
Quick release	YES

**POWERUNIT AND HYDRAULICS**

Engine	CAT C13
Engine power	320 kW (440 HP)
Engine speed	1900 rpm
Flywheel Pump 1	Kawasaki K5V200DP
LH PTO Pump 2	David Brown 5036 5023
RH PTO Pump 3	David Brown 5046 2SPA08
Total system flow	721.3 Lpm (190.5 US Gpm)
Hydraulic tank capacity	1800 L (475 US Gals)
Hydraulic tank ratio	2.5 : 1
Hydraulic Oil cooler	2 off

**ELECTRICS**

Emergency stops	4 off, 2 feeder, 2 powerunit
Chassis cabling	Armored cable
Start Siren	YES - 10 sec delay
Control panel	Plus 1 Danfoss colour screen
Engine shutdowns:	Low oil pressure High water temp Air filter blockage (selectable) Fuel contamination Low hydraulic tank level
Radio control tracks	Standard - Hetronic system
Pendant track control	YES - plugged in control cabinet

**TRACKS**

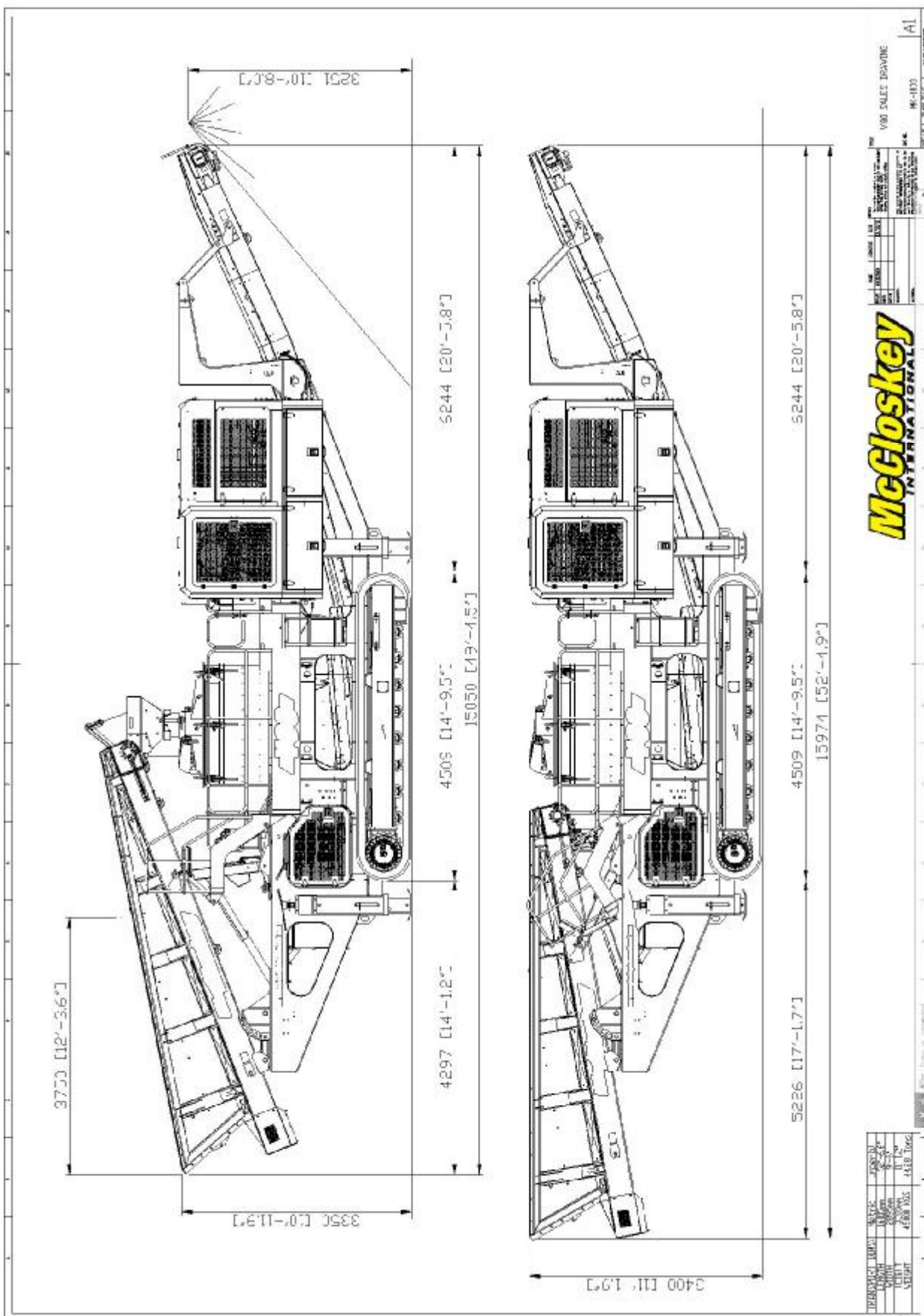
Width	500mm (19.7")
Length	3800mm (12' - 6") crs
Height	798mm (31.4")
Gearbox	Bonfiglioli 711
Ratio	153:1
Motor	Rexroth 90
Speed max	1.50 Kph (0.93 Mph)
Flow rate	138 Lpm (36.45 US gpm)
Dual speed	Variable high speed system
Attachment to chassis	Bolt On for quick change

**OPTIONS**

Roll-in bogie system	
Main conveyor variable speed control	
Interlock system	
Hopper Extensions	
Water Pump and dust suppression system	Standard
Metal detector on Feeder	
Work lights	
Belt scale	

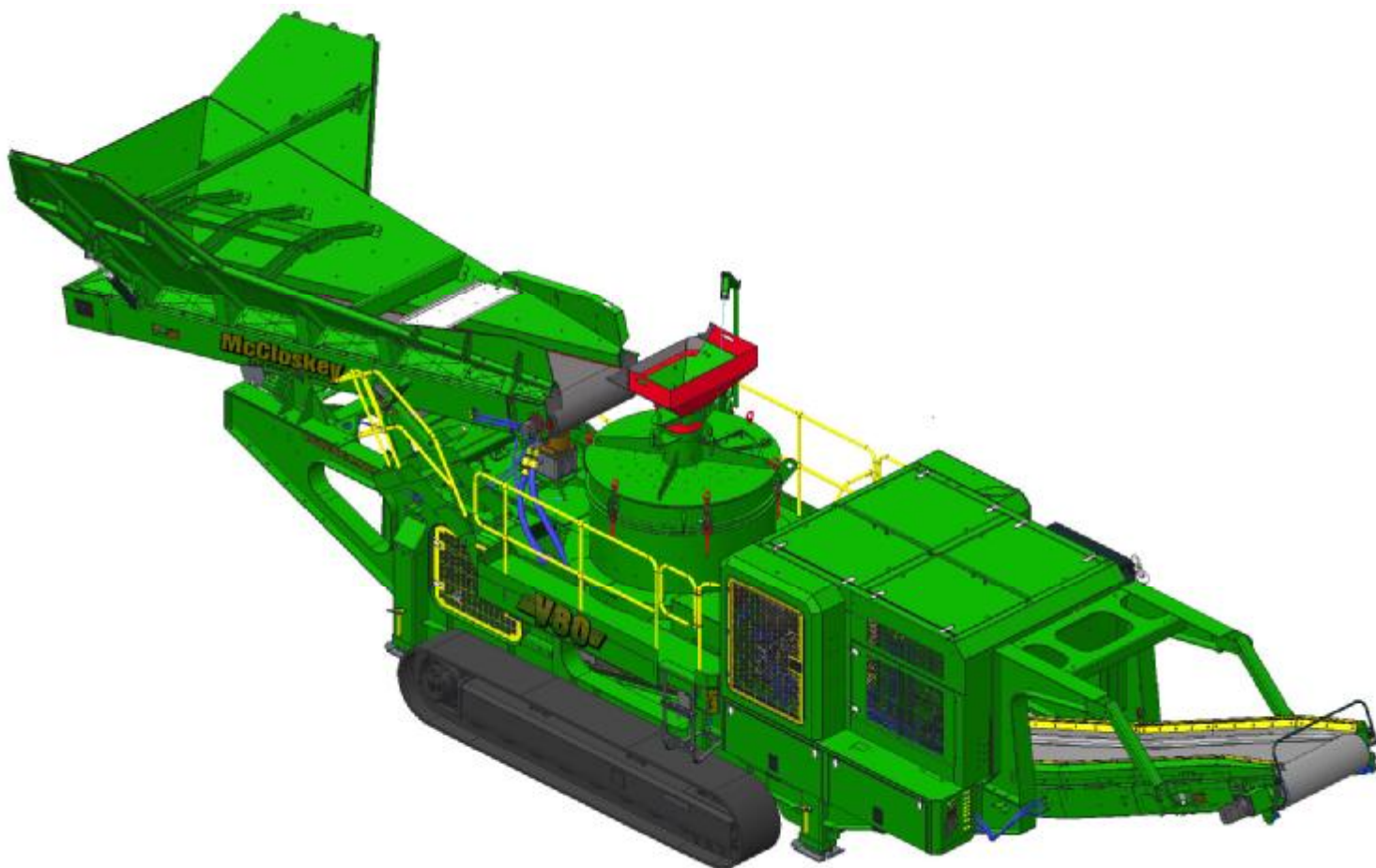
**SAFETY FEATURES**

External belt alignment points
External grease points
Engine safety shutdown systems
Full safety guarding for nip points
Hydraulic oil temp sensor
Fuel level sensor
Return filter sensor





# ***SPECIFICATIONS***



# ***McCloskey*** ***V80***

**DESCRIPTION**

Heavy duty track mounted Crusher with following features:

- Cemco Turbo T-80 VSI crusher.
- 440Hp C13 Cat engine.
- Track or Track c/w Wheel bogie.
- Integrated hopper with folding rear door.
- I-beam plate fabricated chassis construction.
- Large access between crusher discharge and main conveyor feedboot
- Open chassis design for ease of maintenance
- Fast setup time

**DIMENSIONS AND WEIGHTS**

Length - transport all models	15.98m (52' - 4.9")
Width - transport all models	2.9m (9' - 6")
Height - transport track	3.4m (11' - 2")
Weight - track	39,000 Kgs (85,980 lbs) estimated

**CAPACITIES**

Diesel tank capacity	800 L (211 US gal)
Hydraulic tank capacity	1800 L (475 US Gals)

**CRUSHING CHAMBER**

Crusher speed	800 - 1800 rpm
Crusher Drive	Hydraulic - V-belt drive
Feed size Rotor	100mm (4")
Feed size Superchipper™	50mm (2") - 63.5mm (2.5")
Superchipper™ diameter	890mm (35")
Shoe table diameter	890mm (35")
VSI weight	11,430kg (25,200 lbs)
Motor	Kawasaki axial piston 530cc/rev
Flow rate	608 Lpm (160 US gpm)
Level sensor	Ultrasonic
Max feed tonnage	100 - 275 TPH
Hydraulic raise/lower lid for maintenance	





**POSSIBLE INTERNAL CONFIGURATION OPTIONS**

**Shoe Table / Rockshelf**



- Friable, low abrasion material
- Low reduction rate / High recirculating load
- Low percentage of "fracture face" material

**Superchipper™ / Rockshelf**



- Good for shaping abrasive material
- Good for light crushing

**Shoe Table / Anvil Ring**



- Medium range friable material
- Medium to low abrasion material
- Low to Medium recirculating load
- Good reduction rate / Good for "chips" and sand

**Superchipper™ / Anvil Ring**



- Low recirculating load
- High reduction rate / High "fractured face" ratio
- Use with high abrasion, low friability material
- Excellent for producing sands and fines



<i>Shoe Table Data</i>				<i>Superchipper™ Rotor Data</i>			
Diameter	Shoes	Feed Size	Capacity	Diameter	Ports	Feed Size	Capacity
890mm (35")	3,4,5,6	100mm (4")	100-400	890mm (35")	4,5	63mm (2.5")	100-400

Based on cubical feed

**FEEDER**

Feeder opening width	800mm (31.5")
Feeder drum crs.	6000mm (19' 8.2")
Drive	Hydraulic
Feeder belt width	1050mm (42")
Motor	Danfoss OMSS 125
Gearbox	Bonfig 809 W2 23.6:1
Flow rate	87.4 Lpm (23.1 US gpm)
Adjustable speed	Yes
Maximum speed	29 rpm

**HOPPER**

Length	3780mm (12' - 4.9")
Width	2200mm (7' - 2")
Volume	5m <sup>3</sup> (6.5yd <sup>3</sup> )
Material	6mm sides + 10mm Hardox liners
Hopper bridge	YES

**MAIN CONVEYOR**

Stockpile height	3250mm (10' - 8")
Belt width	1050mm (42")
Belt spec	Plain 500/3 8+2
Drive drum dia.	350mm (13.7")
Tail drum dia.	270mm (10.6")
Motor	OMV630
Flow rate	68.4 Lpm (18.1 US gpm)
Maximum speed	108.5 rpm
Angle adjustable	NO
Quick release	YES

**POWERUNIT AND HYDRAULICS**

Engine	CAT C13
Engine power	320 kW (440 HP)
Engine speed	1900 rpm
Flywheel Pump 1	Kawasaki K5V200DP
LH PTO Pump 2	David Brown 5036 5023
RH PTO Pump 3	David Brown 5046 2SPA08
Total system flow	721.3 Lpm (190.5 US Gpm)
Hydraulic tank capacity	1800 L (475 US Gals)
Hydraulic tank ratio	2.5 : 1
Hydraulic Oil cooler	2 off

**ELECTRICS**

Emergency stops	4 off, 2 feeder, 2 powerunit
Chassis cabling	Armored cable
Start Siren	YES - 10 sec delay
Control panel	Plus 1 Danfoss colour screen
Engine shutdowns:	Low oil pressure High water temp Air filter blockage (selectable) Fuel contamination Low hydraulic tank level
Radio control tracks	Standard - Hetronic system
Pendant track control	YES - plugged in control cabinet

**TRACKS**

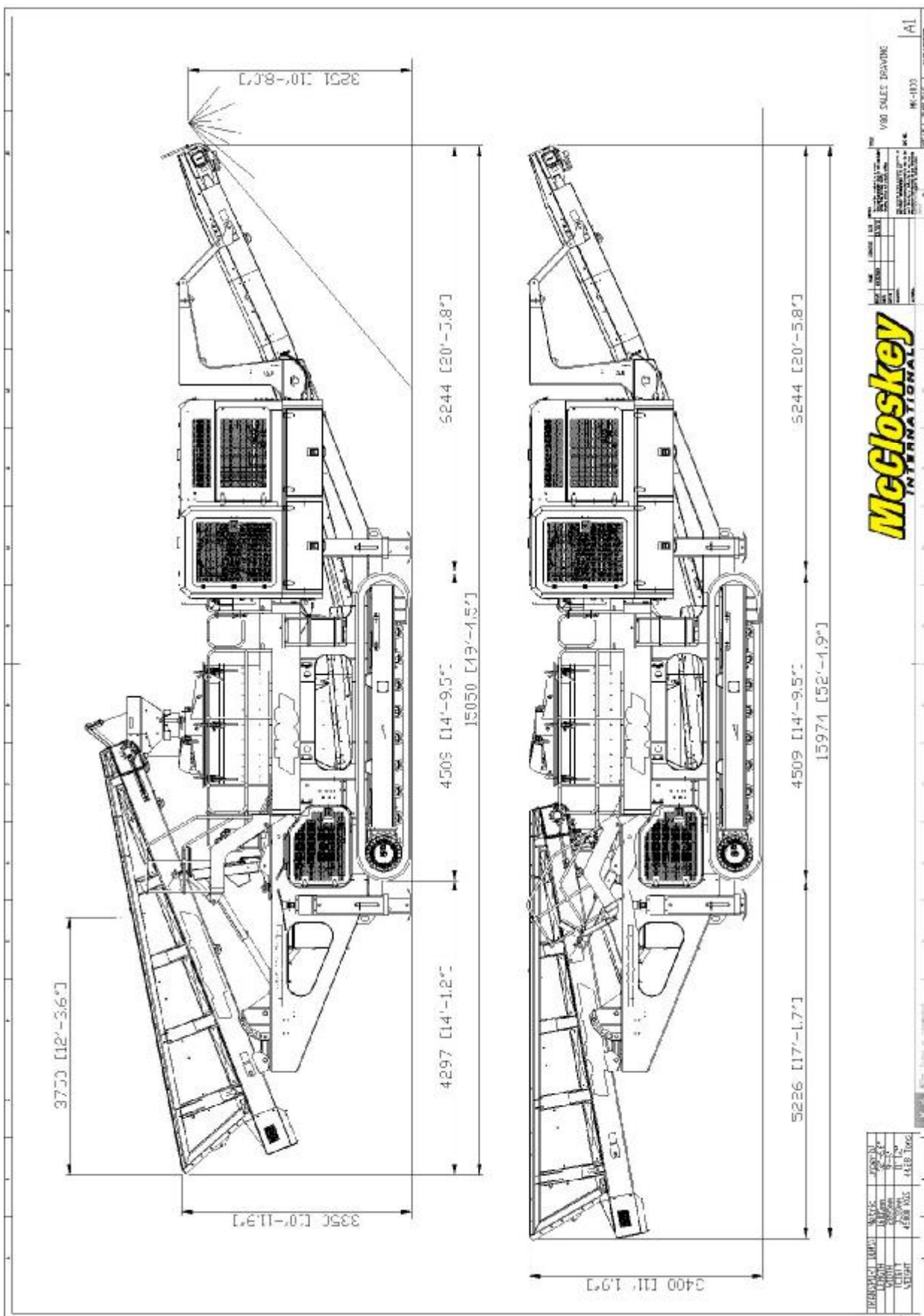
Width	500mm (19.7")
Length	3800mm (12' - 6") crs
Height	798mm (31.4")
Gearbox	Bonfiglioli 711
Ratio	153:1
Motor	Rexroth 90
Speed max	1.50 Kph (0.93 Mph)
Flow rate	138 Lpm (36.45 US gpm)
Dual speed	Variable high speed system
Attachment to chassis	Bolt On for quick change

**OPTIONS**

Roll-in bogie system	
Main conveyor variable speed control	
Interlock system	
Hopper Extensions	
Water Pump and dust suppression system	Standard
Metal detector on Feeder	
Work lights	
Belt scale	

**SAFETY FEATURES**

External belt alignment points
External grease points
Engine safety shutdown systems
Full safety guarding for nip points
Hydraulic oil temp sensor
Fuel level sensor
Return filter sensor



**McCloskey**  
 INTERNATIONAL  
 V80 SALES DRAWING  
 MC-100  
 10/13/13